



45 Series Gas Fryers

Service & Parts Manual



Frymaster, a member of the Commercial Food Equipment Service Association, recommends using CFESA Certified Technicians.

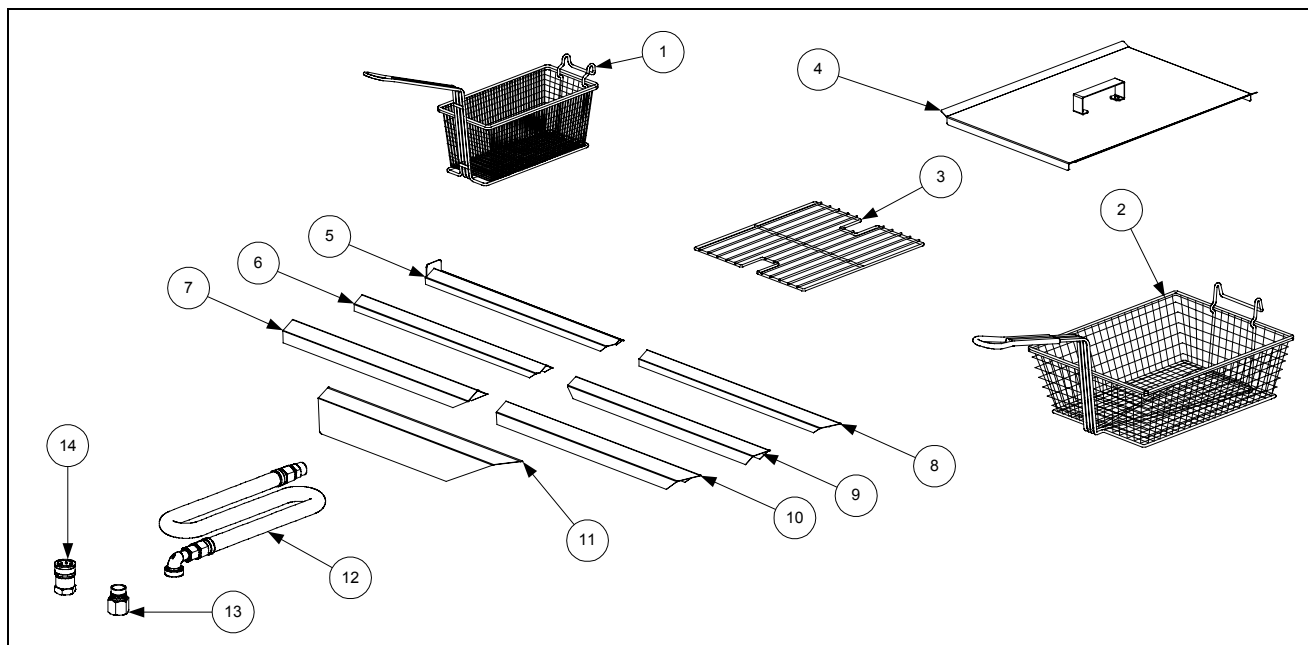
24-Hour Service Hotline 1-800-551-8633

NOVEMBER 2003

*** 8195665 ***

45 SERIES GAS FRYERS SERVICE AND PARTS MANUAL CHAPTER 2: PARTS LIST

ACCESSORIES

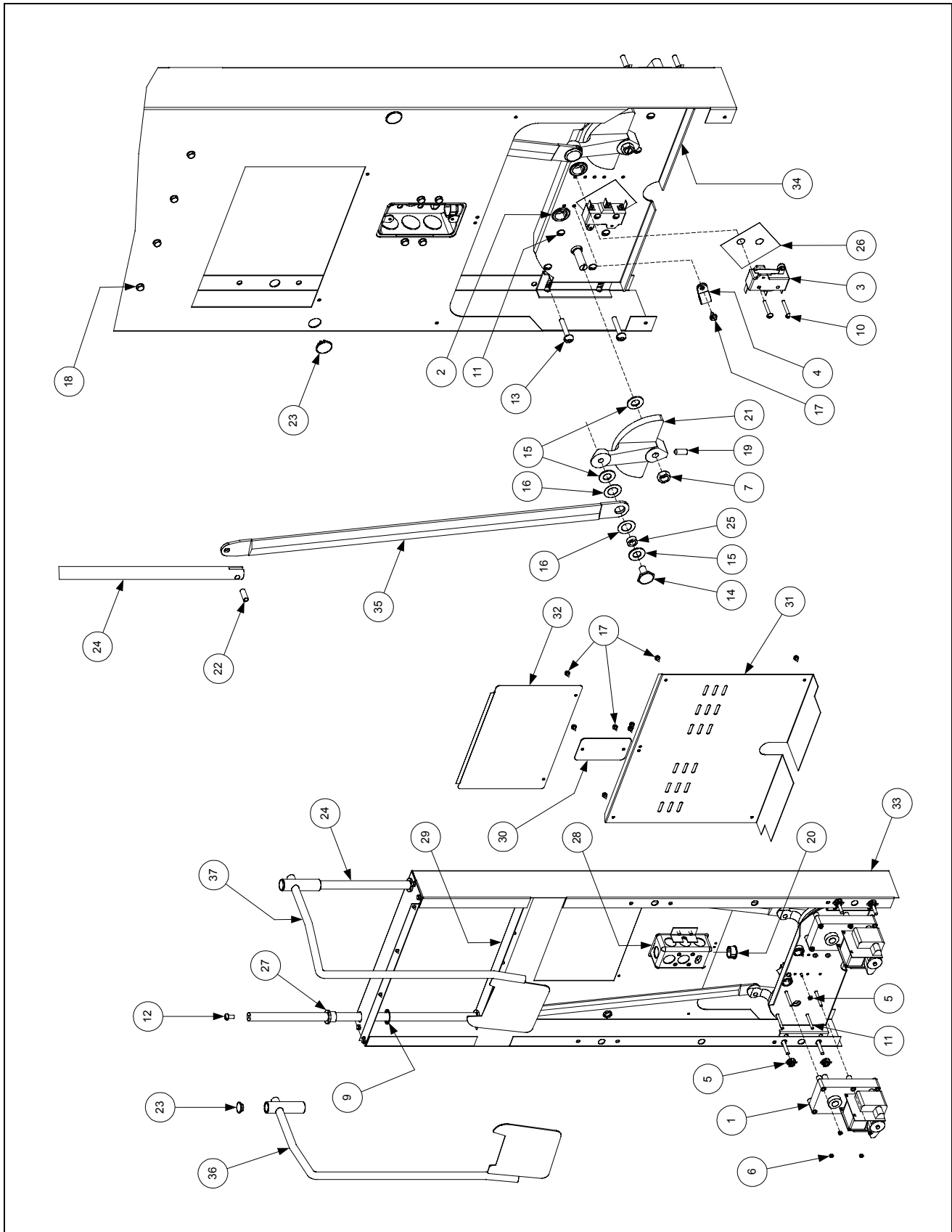


ITEM	PART #	COMPONENT
1	803-0271	Basket, Twin
2	803-0099	Basket, Full (cannot be used with basket lifts)
3	803-0132	Basket Support Rack
*	803-0136	Basket Support Screen (screen w/handle used in place of Item 3)
*	803-0103	Sediment Tray
4	806-5518	Cover, Frypot or Holding Station
*	826-0993SP	Handle Kit, Frypot Cover (includes handle and screws)
5	823-1885	Connecting Strip w/back plate (Burger King only)
6	910-4617	Connecting Strip (blunt point, 1/2" sides, 20.70" long)
7	910-2285	Connecting Strip (blunt point, 1" sides, 20.80" long)
8	910-7515	Connecting Strip (sharp point, 1/2" sides, 21.73" long)
9	910-7443	Connecting Strip (sharp point, 1" sides, 21.73" long)
10	910-7515SP	Connecting Strip (sharp point, 1" sides, 21.84" long)
11	910-2572	Connecting Strip (sharp point, 3" sides, 21.84" long)
12		Gas Line, 1-Inch Dormont Flexible (includes Items 13 and 14)
	806-1698SP	36-Inch (for gas line only (w/o Items 13 and 14), use 810-0088)
	806-1699	42-Inch (for gas line only (w/o Items 13 and 14), use 810-0085)
13	810-0074	Quick-Disconnect Fitting, 1-Inch Male
14	810-0073	Quick-Disconnect Fitting, 1-Inch Female

* Not illustrated.

BASKET LIFT ASSEMBLIES AND COMPONENT PARTS

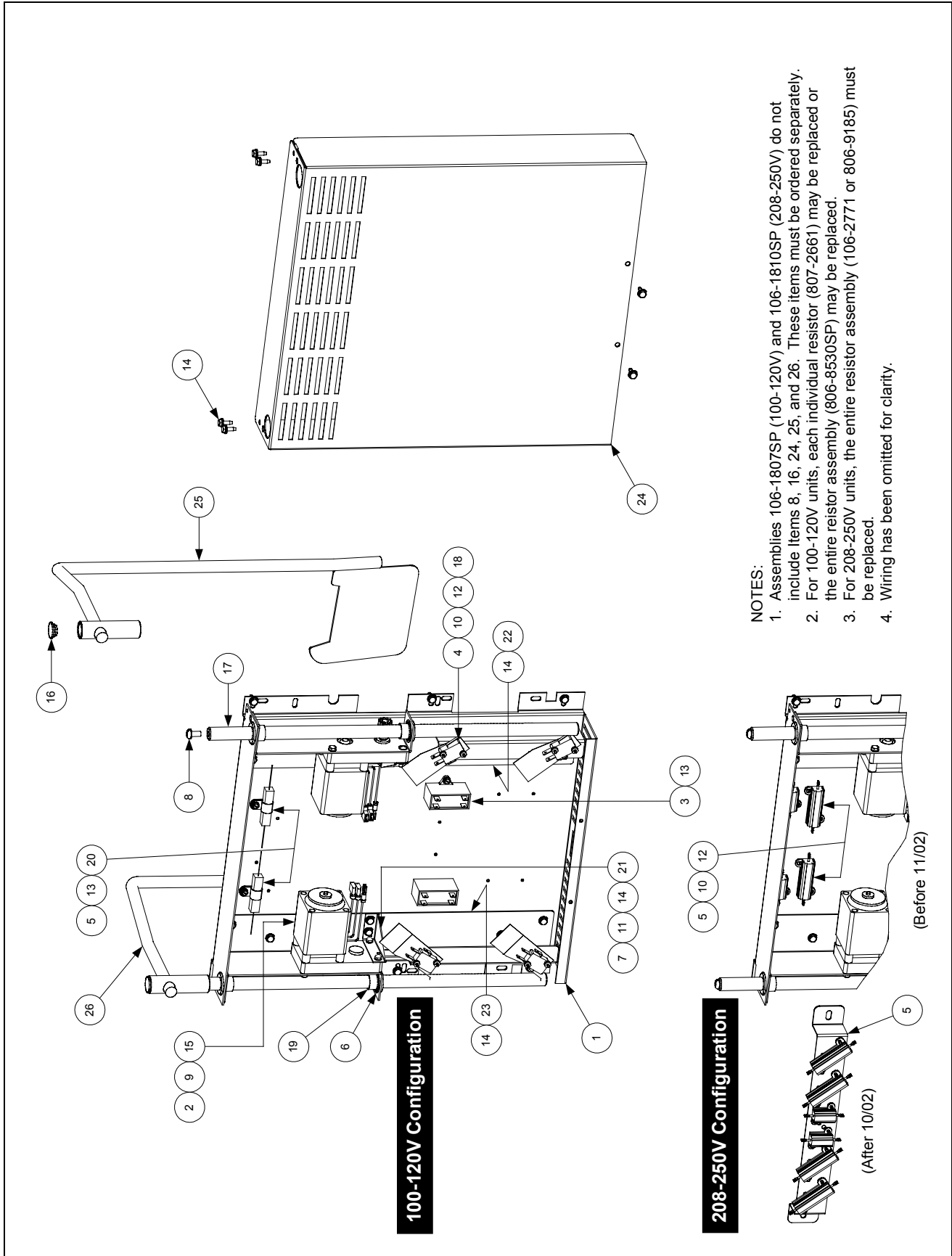
Bell Crank Basket Lift



ITEM	PART #	COMPONENT
1		Gear Motor, Basket Lift
	807-0107	120VAC
	807-0108	240VAC
2	807-0124	Bushing, Plastic
3	807-0240	Microswitch
4	826-1680	Clamp, Plastic Wire (Pkg. of 8)
5	826-1358	Nut, 6-32 Hex (Pkg. of 25)
6	809-0050	Nut, 2-32 Hex
7	809-0063	Nut, Jam 3/8-16 Hex
8	809-0076	Nut, 1/4-20 x 3/4 Expansion
9	809-0082	Ring, Truarc Retaining
10	809-0097	Screw, 6-32 X 1-inch Slotted Truss Head
11	809-0113	Screw, 2-32 X 1 1/2-inch Slotted Truss Head
12	809-0127	Screw, 1/4-20 X 1/2-inch Slotted Round Head
13	826-1370	Screw, 1/4-20 X 1 1/4-inch Slotted Round Head (Pkg. of 10)
14	809-0155	Leveling Screw
15	809-0196	Washer, 3/8-inch Steel Flat
16	826-1381	Washer, Nylon (Package of 10 each 809-0203)
17	809-0360	Screw, 2-32 X 3/8-inch Slotted Hex Washer Head
18	826-1374	Screw, 10 X 1/2-inch Hex Washer Head (Pkg. of 25)
19	809-0480	Setscrew, 1/4-28 X 5/8-inch Hex Socket Head
20	810-0045	Bushing, Plastic
21	810-0052	Bellcrank and Cam
22	810-0170	Pin, Connecting
23	810-0172	Plug, 5/8-inch Hole S/S
24	810-0192	Rod, Basket Lift
25	810-0220	Spacer, Tubular
26	812-0138	Insulation, Paper (Fishpaper)
27	813-0035	Bushing, Bronze
28	823-1419	Box, Electrical Wiring
29	900-4110	Angle, Bearing Support
30	910-0119	Cover, Electrical Wiring Box
31	910-3177	Panel, Stainless Steel Rear Access (for mild steel, use 900-3177)
32	910-3783	Cover, Stainless Steel Rear Cabinet (for mild steel, use 900-3783)
33	910-9361	Housing, Basket Lift Stainless Steel (for mild steel, use 900-9361)
34	920-3233	Plate, Basket Lift Motor Mounting
35	920-6076	Link, Basket Lift
36	823-06931	Basket Lift Arm, Left
37	823-06932	Basket Lift Arm, Right

NOTE: See Page 2-20 for Roller Bracket Assembly.

Modular Basket Lift



ITEM	PART #	COMPONENT
1		Mount, Modular Basket Lift**
	200-2942	For use on units with 12-pin connectors
	900-7655	For use on units with 6-pin connectors
2	806-5964SP	Motor Assembly, Modular Basket Lift***
3	807-2133	Capacitor, 12.5 µFarad, 250VAC Motor Run
4	807-2572	Microswitch
5		Resistor Assembly
	806-8530SP	100-120V Modular Basket Lift (see Note 2 in illustration)
	106-2771	208-250V Modular Basket Lift (before 11/02 use 806-9185; see illust. Note 3)
6	809-0082	Ring, Truarc Retaining
7	826-1361	Screw, 2-32 X 1-inch Slotted Truss Head (Pkg. of 25)
8	809-0127	Screw, ¼-20 X ½-inch Slotted Round Head
9	809-0186	Lock Washer w/External Teeth, #8
10	826-1366	Nut, 4-40 Hex Keps (Pkg. of 25)
11	809-0247	Nut, 2-32 Hex Keps
12	826-1359	Screw, 4-40 X ¾-inch Slotted Round Head (Pkg. of 25)
13	826-1371	Screw, #8 X ½-inch Hex Head Drill Point (Pkg. of 25)
14	826-1374	Screw, #10 X ½-inch Hex Head (Pkg. of 25)
15	809-0503	Screw, 2-32 X ½-inch Hex Head
16	810-0172	Plug, ⅝-inch Stainless Steel Hole
17	810-1012	Rod, Modular Basket Lift
18	812-0442	Insulation, Microswitch
19	813-0035	Bushing, Bronze, .640" ID
20	816-0033	Tie Wrap, Screw Mount
21	900-5529	Gusset, Modular Basket Lift Motor
22	901-8499	Chassis, Modular Basket Lift, Left
23	902-8499	Chassis, Modular Basket Lift, Right
24	910-4776	Cover, S/S Modular Basket Lift (for CRS cover use 900-4776)
25	823-06931	Arm, Left Basket Lift
26	823-06932	Arm, Right Basket Lift
		Basket Lift Assemblies (see Note 1 in illustration)
*	106-1807SP	100-120V w/o Relay
*	106-1810SP	208-250V w/o Relay

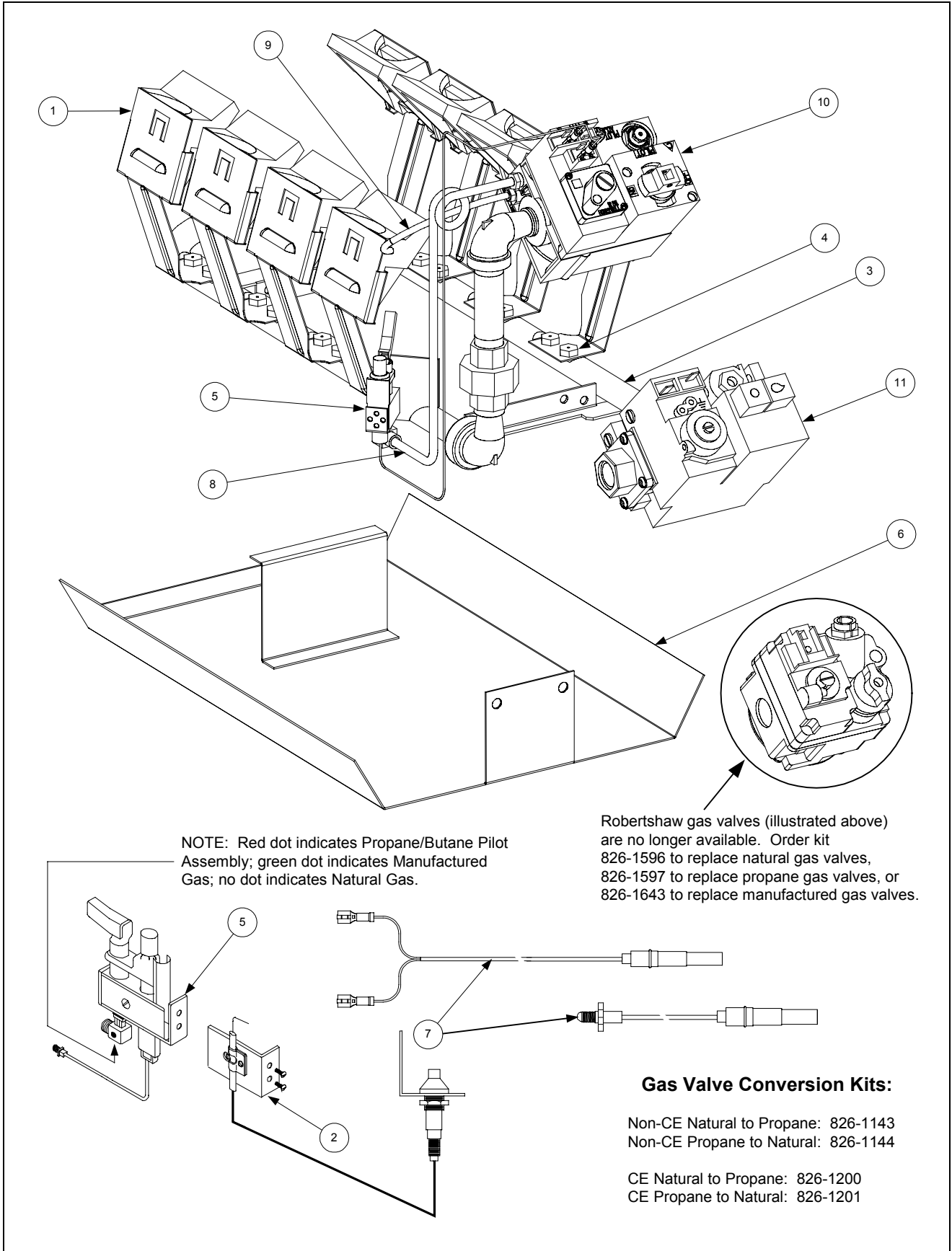
* Not illustrated.

** Basket lift assemblies manufactured prior to February 2002 have 6-pin connectors; those manufactured February 2002 and later have 12-pin connectors. Verify the connector in use before ordering wiring assemblies or mounts.

*** To replace stripped drive gear only, order 810-1013 (gear), 810-0973 (Woodruff key) and 809-0504 (setscrew).

NOTE: See Page 2-20 for Roller Bracket Assembly.

BURNER ASSEMBLY COMPONENT PARTS



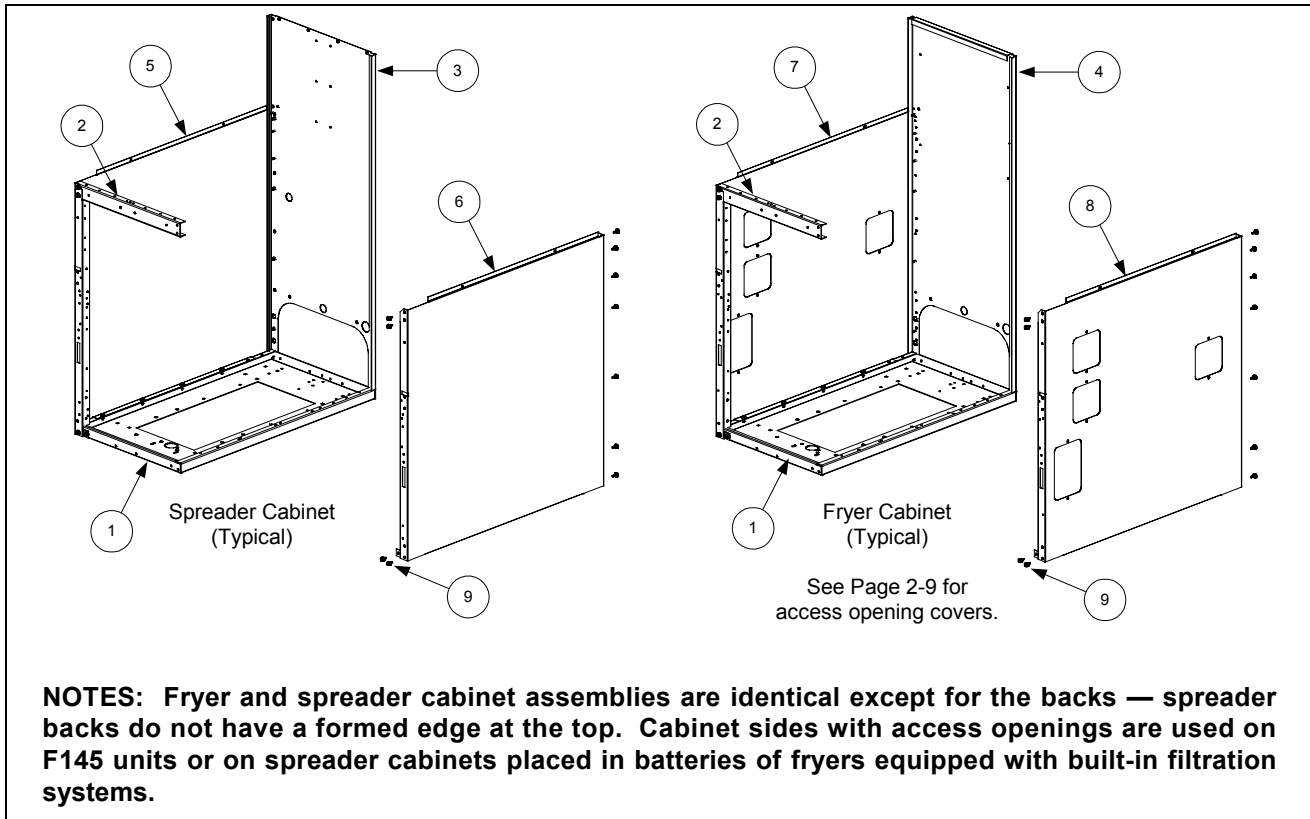
ITEM	PART #	COMPONENT
1	806-0225SP	Deflector (Target) Assembly (use 814-0034 for ceramic only)
2	826-1155	Ignitor Kit, Optional Piezo
	807-1906	Electrode Assembly
	810-1001	Trigger
3	823-0496	Manifold, Burner
4		Orifice
	810-0407	Manufactured Gas, 2.15mm (0-1999 Ft)
		Natural Gas
	826-1357	1.45mm (0-1999 Ft) (Pkg of 10)
	826-1386	1.40mm (2000-3999 Ft) (Pkg of 10)
	810-0361	1.36mm (4000-5999 Ft)
	810-0131	1.30mm (6000-7999 Ft)
	812-1301	1.27mm (8000-8999 Ft)
	810-0343	1.25mm (9000-10,000 Ft)
		Propane/Butane Gas
	826-1387	0.86mm (0-1999 Ft) (Pkg of 10)
	810-0952	0.82mm (2000-3999 Ft)
	810-0339	0.81mm (4000-5999 Ft)
	812-0914	0.78mm (6000-7999 Ft)
	812-1302	0.76mm (8000-8999 Ft)
	812-0444	0.74mm (9000-10,000 Ft)
5		Pilot Assembly
	810-1830	Natural Gas, w/Thermopile (non-CE w/twin-leads)
	806-8688SP	Natural Gas, w/Thermocouple (CE w/co-axial lead)
	810-0426	Natural Gas, w/o Thermopile or Thermocouple
	810-0616	Propane or Butane Gas, w/Thermopile (non-CE w/co-axial lead)
	810-1773	Propane or Butane Gas, w/Thermopile (non-CE w/twin leads)
	806-8689SP	Propane or Butane Gas, w/Thermocouple (CE)
	810-0427	Propane or Butane Gas, w/o Thermopile or Thermocouple)
	810-0683	Manufactured Gas, w/Thermocouple (CE and non-CE)
6	823-0574	Shield Assembly, Burner Heat
7		Thermopile/Thermocouple
	810-1873	Thermopile w/push-on terminals (used in non-CE Pilot Assemblies)
	826-1527	Kit, Thermocouple with adapter (used in CE Pilot Assemblies)
	812-1284	Thermocouple w/threaded terminal (component of 826-1527)
8		Tube, Pilot Gas
	810-0705	For use with all burner assemblies except Hong Kong export units
	812-0278	For use with Hong Kong export units only
9	810-0691	Tube, Vent
10		Valve, Gas (Non-CE) (see Note 1 below)
*	810-0975	Knob, Gas Valve
	807-3294	Natural Gas (for 240V, use 807-0025)
	807-3295	Propane/Butane Gas (for 240V, use 807-0759)
	807-3354	Manufactured Gas (other than Hong Kong export units)
	810-0353	Manufactured Gas (Hong Kong export units only)
11		Valve, Gas (CE)
	806-6710SP	Natural Gas (see Note 2 below)
	806-6711SP	Propane Gas (see Note 2 below)

* Not illustrated.

NOTES: **1.** A gas valve capacitor (P/N 806-4781) is required on gas valves used on units with Thermostat Controllers. **2.** An adapter kit (P/N 812-1256SP) is required to connect the high-limit thermostat to Item 11. See Page 2-34 for details.

CABINET ASSEMBLIES AND COMPONENT PARTS

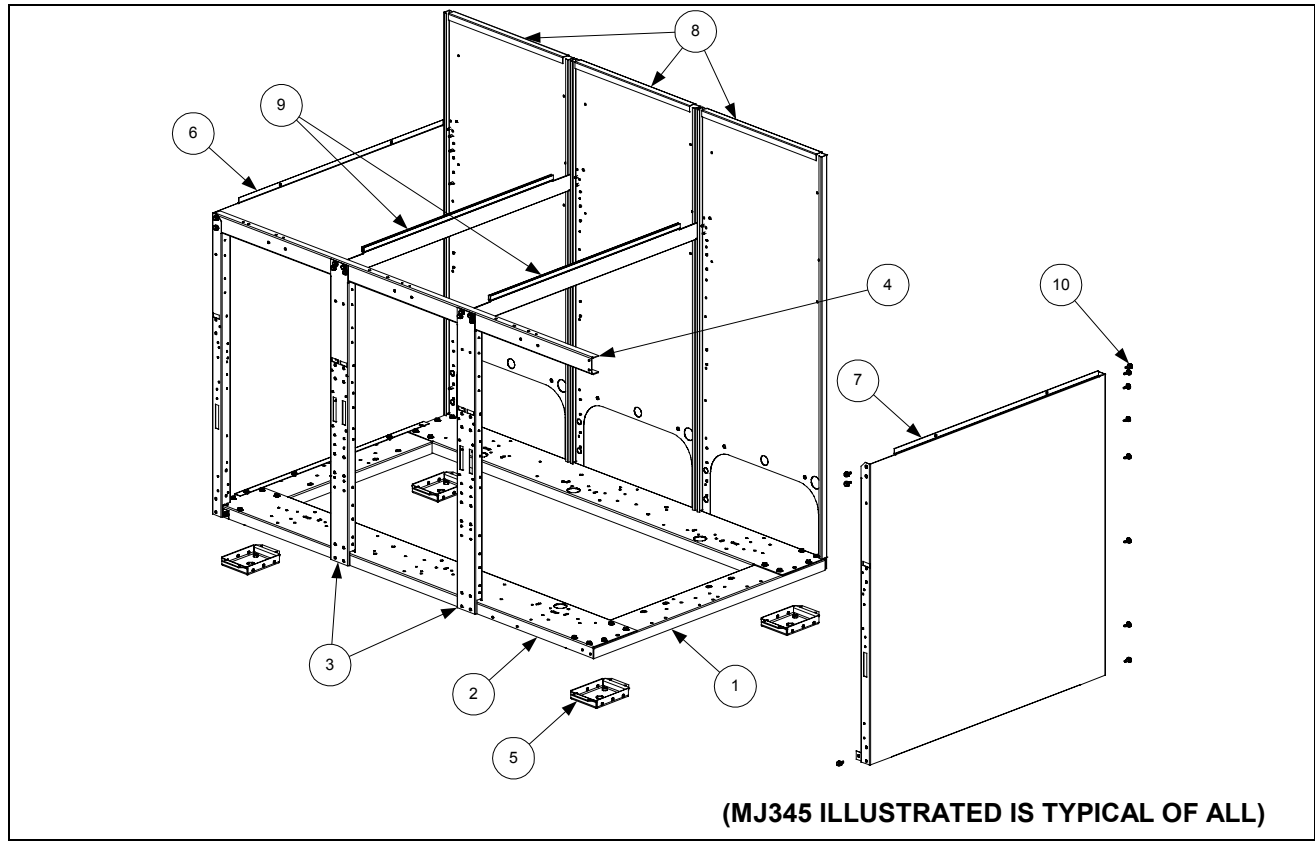
MJ145, F145 (Filter Ready), and Spreader Cabinet Assembly Components



NOTE: See Page 2-14 for casters, legs, and associated hardware, and Page 2-10 for holding station pan components.

ITEM	PART #	COMPONENT
1	900-2568SP	Base, Cabinet, One-Piece
2	900-4813SP	Brace, Cabinet Top
3		Back, Spreader Cabinet
	910-7213SP	Stainless Steel
	900-7213SP	Aluminized Steel
4		Back, Fryer Cabinet
	910-6983SP	Stainless Steel
	900-6983SP	Aluminized Steel
5		Side, Left Cabinet w/o Access Openings
	911-9323SP	Stainless Steel
	901-9323SP	Enameled
6		Side, Right Cabinet w/o Access Openings
	912-9323SP	Stainless Steel
	902-9323SP	Enameled
7		Side, Left Cabinet w/Access Openings
	911-9324SP	Stainless Steel
	901-9324SP	Enameled
8		Side, Right Cabinet w/Access Openings
	912-9324SP	Stainless Steel
	902-9324SP	Enameled
9	826-1374	Screw, #10 X 1/2-inch Hex Washer Head (package of 25)

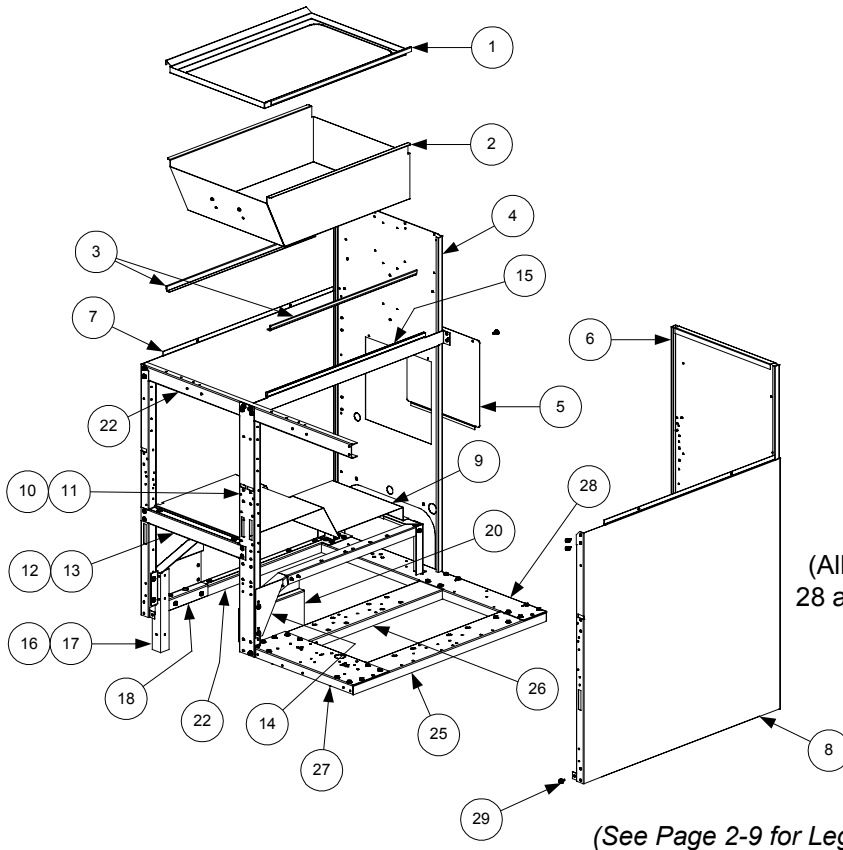
MJ45 Batteries



NOTE: See Page 2-14 for casters, legs and associated hardware.

ITEM	PART #	COMPONENT
1	900-4426SP	Channel, Left and Right Side
2		Channel, Front and Rear
	900-2395SP	Double
	900-2396SP	Triple
	900-9373	Quad
3	900-6979SP	Post, Door
4		Brace, Cabinet Top
	900-7730SP	Double
	900-9430SP	Triple
	900-9318	Quad
5	806-5209SP	Leg Pad Assembly
6		Side, Left Cabinet
	911-9323SP	Stainless Steel (<i>use 911-9324SP for side with access openings</i>)
	901-9323SP	Enameled (<i>use 901-9324SP for side with access openings</i>)
7		Side, Right Cabinet
	912-9323SP	Stainless Steel (<i>use 912-9324SP for side with access openings</i>)
	902-9323SP	Enameled (<i>use 902-9324SP for side with access openings</i>)
8		Back, Cabinet
	910-6983SP	Stainless Steel
	900-6983SP	Aluminized Steel
9	900-7326	Divider, Cabinet
10	826-1374	Screw, #10 X ½-inch Hex Washer Head (package of 25)

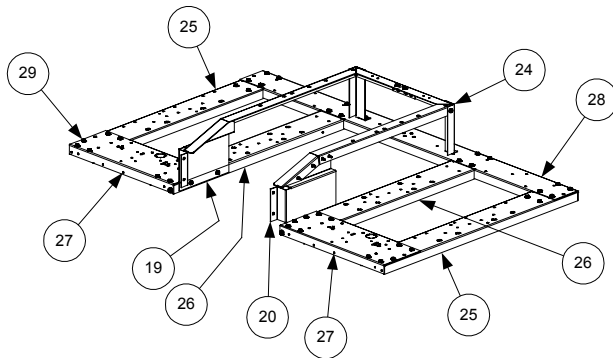
FM45 Batteries with Built-In Filtration



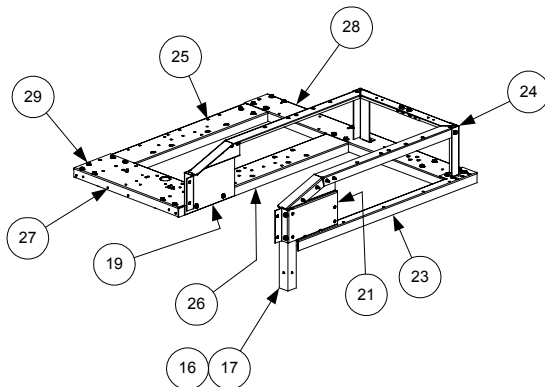
NOTE: Items 1-15 are used in all FM45 Built-In Filter configurations and therefore are not repeated for the FM245 and FM145 (Filter on Right) illustrations.

FM145 (FILTER ON LEFT)
 (All components except Items 27 and 28 are the same for FM245 and FM345 units with the filter on the left.)

(See Page 2-9 for Leg Pad Assembly)



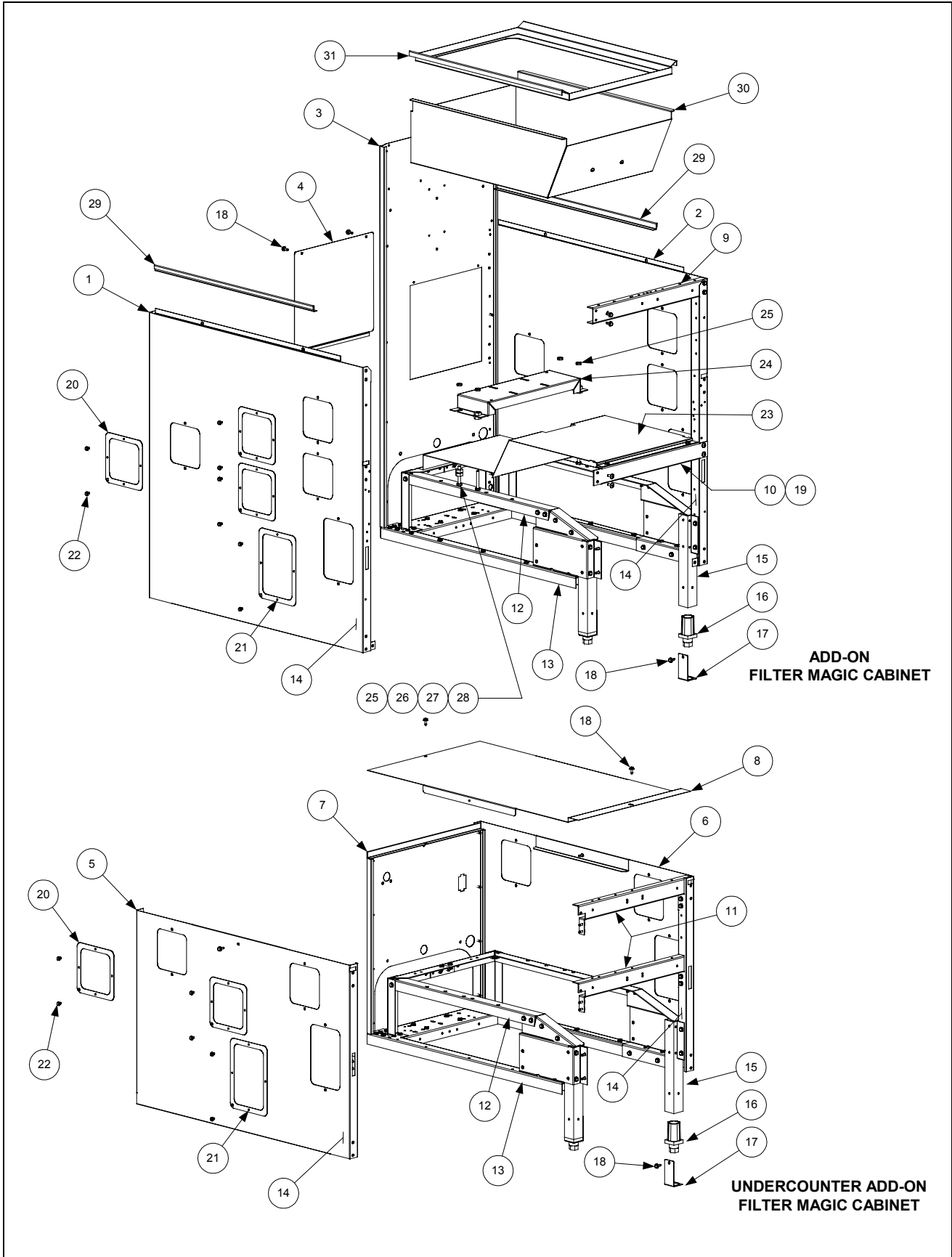
FM245 (FILTER BETWEEN FRYERS)
 (All components except Items 27 and 28 are the same for FM345 cabinets with the filter between fryers.)



FM145 (FILTER ON RIGHT)
 (All components except Items 27 and 28 are the same for FM245 and FM345 units with the filter on the right.)

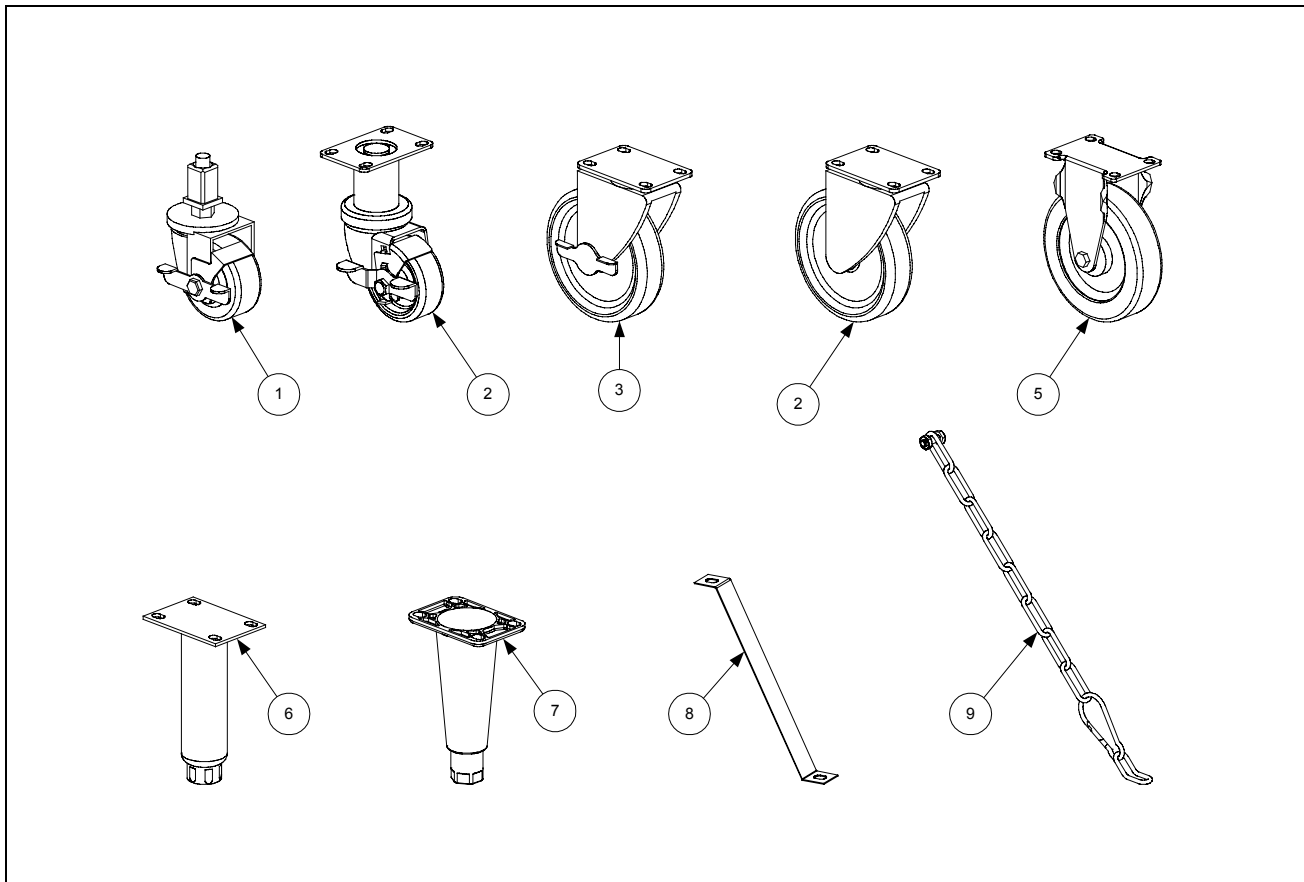
ITEM	PART #	COMPONENT
1	910-7480	Trim, Filter Cabinet Top
2	806-8274SP	Pan Assembly, Filter/Spreader Cabinet
3	900-7277	Support, Drain Pan
4		Back w/Access Opening, Filter Cabinet
	910-7274SP	Stainless Steel
	900-7274SP	Aluminized Steel
5	900-4089	Cover, Cabinet Back Access
6		Back, Cabinet
	910-6983SP	Stainless Steel
	900-6983SP	Aluminized Steel
7		Side, Left Cabinet
	911-9323SP	Stainless Steel
	901-9323SP	Enameled
8		Side, Right Cabinet
	912-9323SP	Stainless Steel
	902-9323SP	Enameled
9	900-7414	Shield, Filter Magic Pan
10	900-6979SP	Post, Door
11	809-0413	Spacer, .25 x .160 8 Gauge Nylon (located behind Item 10 at bottom)
12	900-4391SP	Brace, Front Cabinet
13	826-1379	Screw, #10 x 1/2-inch Philips Truss Head (package of 10)
14	900-1700	Bracket, Drain Support
15	900-7314SP	Divider, Cabinet
16	910-1601	Leg, Filter
17	900-1621	Plate, Rail Mount (located inside front edge of Item 7)
18	901-1599	Bracket, Left Pan Rail (used on cabinets with filter on left)
19	901-1595	Bracket, Left Pan Rail (used on cabinets with filter on right or in middle)
20	902-1599	Bracket, Right Pan Rail (used on cabinets with filter in middle)
21	902-1595	Bracket, Right Pan Rail (used on cabinets with filter on right)
22	901-4390	Channel, Left Filter Side
23	902-4390	Channel, Right Filter Side
24	806-4917	Rail Assembly, Filter Magic
25	900-4426	Channel, Fryer Outside
26	900-4383	Channel, Fryer Inside
27		Channel, Fryer Front
	900-2394	Single Fryer
	900-2395	Double Fryer
	900-2396	Triple Fryer
28		Channel, Filter Magic Cabinet Rear
	900-1631	FM145 Filter Left
	900-7243	FM245 Filter Left
	900-9319	FM345 Filter Left
	900-1630	FM145 Filter Right
	900-7244	FM245 Filter Right
	900-9322	FM345 Filter Right
	900-7242	FM245 Filter Middle
	900-9321	FM345 (Fryer, Fryer, Filter, Fryer)
	900-9320	FM345 (Fryer, Filter, Fryer, Fryer)
29	826-1374	Screw, #10 X 1/2-inch Hex Washer Head (package of 25)

Filter Magic II Add-On Cabinet Components



ITEM	PART #	COMPONENT
1		Side, Left Cabinet, w/Access Openings
	911-9324SP	Stainless Steel
	901-9324SP	Enameled
2		Side, Right Cabinet, w/Access Openings
	912-9324SP	Stainless Steel
	902-9324SP	Enameled
3		Back w/Access Opening, Filter Cabinet
	910-7274SP	Stainless Steel
	900-7274SP	Aluminized Steel
4		Cover, Cabinet Back Access
	910-4089	Stainless Steel
	900-4089	Aluminized Steel
5		Side, Left Undercounter Cabinet
	911-7677SP	Stainless Steel
	901-7677SP	Enameled
6		Side, Right Undercounter Cabinet
	912-7677SP	Stainless Steel
	902-7677SP	Enameled
7		Back, Undercounter Cabinet
	910-4786	Stainless Steel
	900-4786	Aluminized Steel
8	910-7680	Cover, Undercounter Cabinet
9	900-4813SP	Brace, Cabinet Top
10	900-4391SP	Brace, Cabinet Front
11	900-4785	Brace, Undercounter Cabinet Top and Center
12	806-5317SP	Rail Assembly
13	806-4897SP	Base Assembly (<i>includes leg pad assembly 806-5209 (see Page 2-13)</i>)
14	900-1621	Plate, Rail Mount (located inside lower front edge of Items 1, 2, 5, and 6)
15	910-1601	Leg, Filter Cabinet (use 910-8673 on units with rear casters)
16	810-0007	Leg, Adjustable
17	910-1832	Retainer, Leg Insert, Full Height
18	826-1374	Screw, #10 X ½-inch Hex Washer Head (Pkg. of 25)
19	826-1379	Screw, #10 X ½-inch Philips Truss Head (Pkg. of 10)
20		Cover, 4-inch X 4-inch Access Opening
	910-0889	Stainless Steel
	900-0889	Enameled
21		Cover, 4-inch X 4-inch Access Opening
	910-0890	Stainless Steel
	900-0890	Enameled
22	809-0359	Screw, #8 X ¼-inch Hex Washer Head (for access covers)
23	900-7414	Shield, FM Pan
24	900-4175	Mount, Motor
25	826-1362	Nut, ¼-20 Hex (Pkg. of 10)
26	809-0429	Bolt, ¼-20 X 2-inch Hex Head
27	809-0191	Washer, ¼-inch Lock
28	810-0665	Nut, ¼-20 Hex Leveling
29	900-7277	Support, Holding Station Pan
30	806-8274SP	Pan Assembly, Holding Station
31	910-7480	Trim, Holding Station

CASTERS, LEGS, AND ASSOCIATED HARDWARE

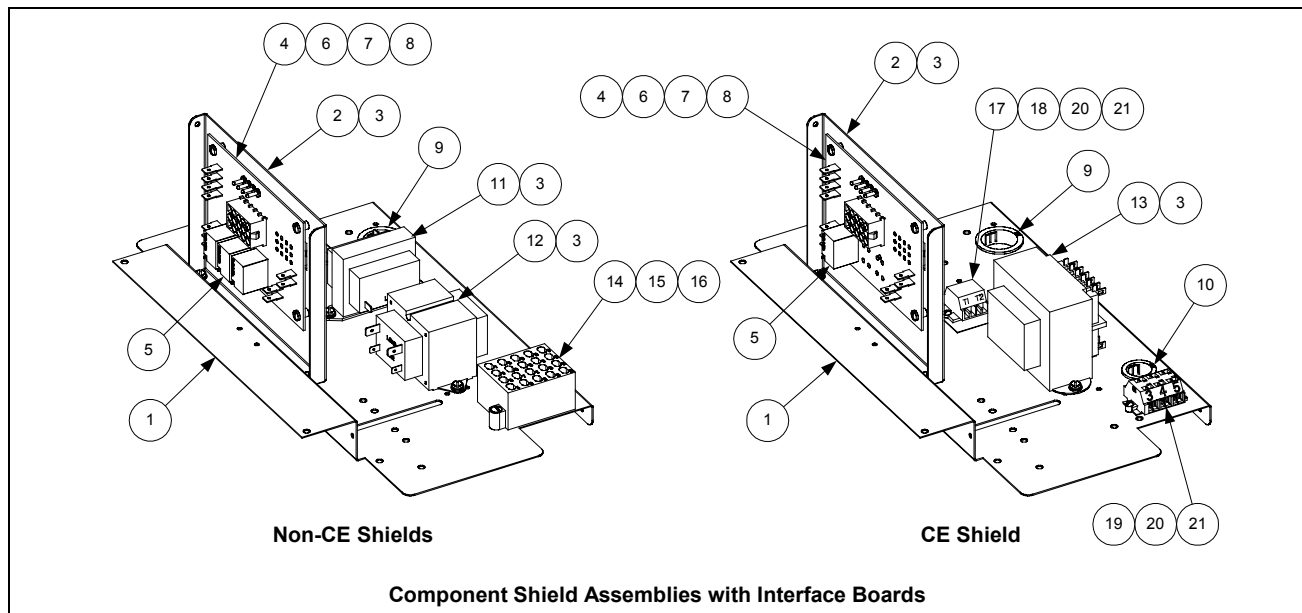


ITEM	PART #	COMPONENT
1	823-2669	Caster, 3" Swivel w/Brake (<i>optional substitute for front leg in FM add-on cabinet</i>)
2	826-1130	Caster, 3" Swivel w/Brake (810-0651 and mounting hardware)
3	826-1118	Caster, 5" Swivel w/Brake (810-0357 and mounting hardware)
4	826-1117	Caster, 5" Swivel w/o Brake (810-0356 and mounting hardware)
5	826-1138	Caster, 5" Rigid w/o Brake (810-0378 and mounting hardware)
6	826-1237	Leg Assembly, Stainless Steel
7	826-1115	Leg Assembly, Nickel Plated
8	826-1095	Anchor Strap Kit (for use on single fryers w/legs)
9	826-0900	Chain Restraint Kit (for use on fryers w/casters)
*	826-1113	Kit, Mounting Hardware, 1 Caster/Leg (4 mounting bolts and lock washers)
*	826-1098	Kit, Mounting Hardware, 2 Casters/Legs (8 mounting bolts and lock washers)
*	826-1043	Kit, Mounting Hardware, 4 Casters/Legs (16 mounting bolts and lock washers)

* Not illustrated.

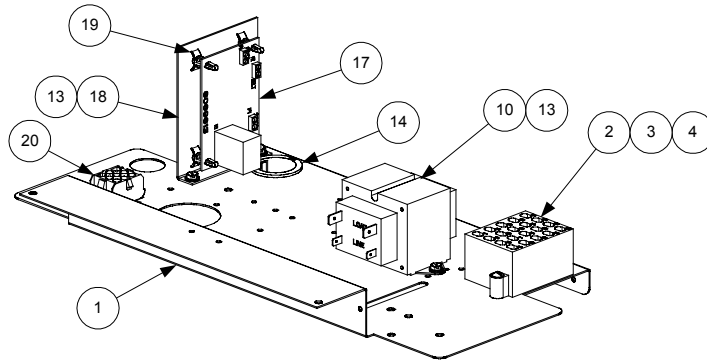
NOTE: Items 2 through 8 include 1 caster or leg, 4 mounting bolts, and 4 lock washers.

COMPONENT SHIELDS, FILTER BOX ASSEMBLIES, AND COMPONENT PARTS



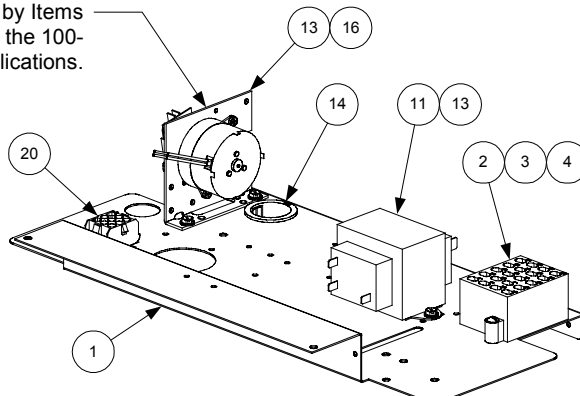
ITEM	PART #	COMPONENT
		Complete Shield Assemblies
	806-4773SP	100-120V, 50/60 Hz (Non-CE)
	806-4775SP	208-240V, 50/60 Hz (Non-CE)
	806-6629SP	230V, 50 Hz (CE)
		Components
1	900-4340	Shield, Component
2	824-0161	Support, Interface Board
3	809-0360	Screw, #8 X 3/8-inch Washer Slotted Hex Head
4		Interface Board
	806-3548	Non-CE Universal Replacement
	806-7505	CE Universal Replacement
5	807-1582	Relay, 12VDC
*	810-2243	Clip, Relay Retaining
6	809-0349	Spacer, 4 x 6 mm, Interface Board Standoff
7	809-0096	Screw, 6-32 X 5/8-inch Slot Head
8	809-0250	Nut, 6-32 Hex Keys
9	807-2469	Bushing, Heyco (fits 7/8-inch (.875-inch) hole)
10	810-0045	Bushing, Heyco (fits 1.25-inch hole)
11		Transformer, 12V Secondary
	807-0855	100-120V 50/60 Hz Primary
	807-0979	208-240V 50/60 Hz Primary
12		Transformer, 24V Secondary
	807-0800	100-120V 50/60 Hz Primary
	807-0680	208-240V 50/60 Hz Primary
13	807-1999	Transformer, 208-240V Primary/12V and 24V Secondary Dual Voltage
14	807-0066	Terminal Block, 20-Position
15	809-0097	Screw, 6-32 X 1-inch Slotted Round Head
16	826-1358	Nut, 6-32 Hex (Pkg. of 25)
17	816-0217	Paper, Insulating
18	810-1164	Terminal Block, 6-Position
19	810-1168	Terminal Block, 8-Position
20	826-1359	Screw, 4-40 X 3/4-inch Slotted Round Head (Pkg. of 25)
21	826-1366	Nut, 4-40 Hex Keys (Pkg. of 25)

* Not illustrated.



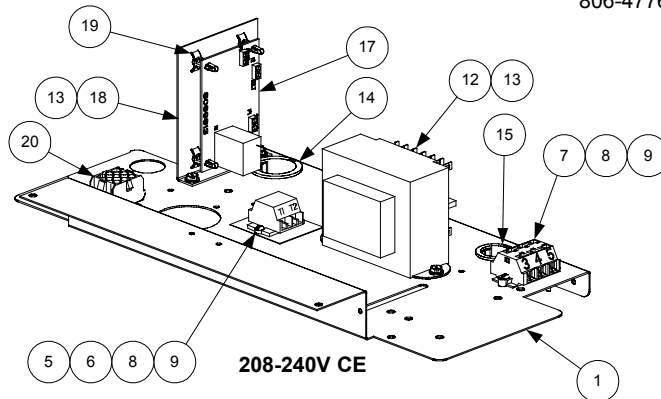
100-120V Non CE

Electromechanical timer shown for identification purposes only. This timer has been replaced by Items 17, 18, and 19 (shown in the 100-120V illustration) in all applications.



208-240V Non-CE

NOTE: Melt cycle timers (Items 16 and 17) are not present in shield assemblies 806-4774SP, 806-4776SP, and 806-6630SP.

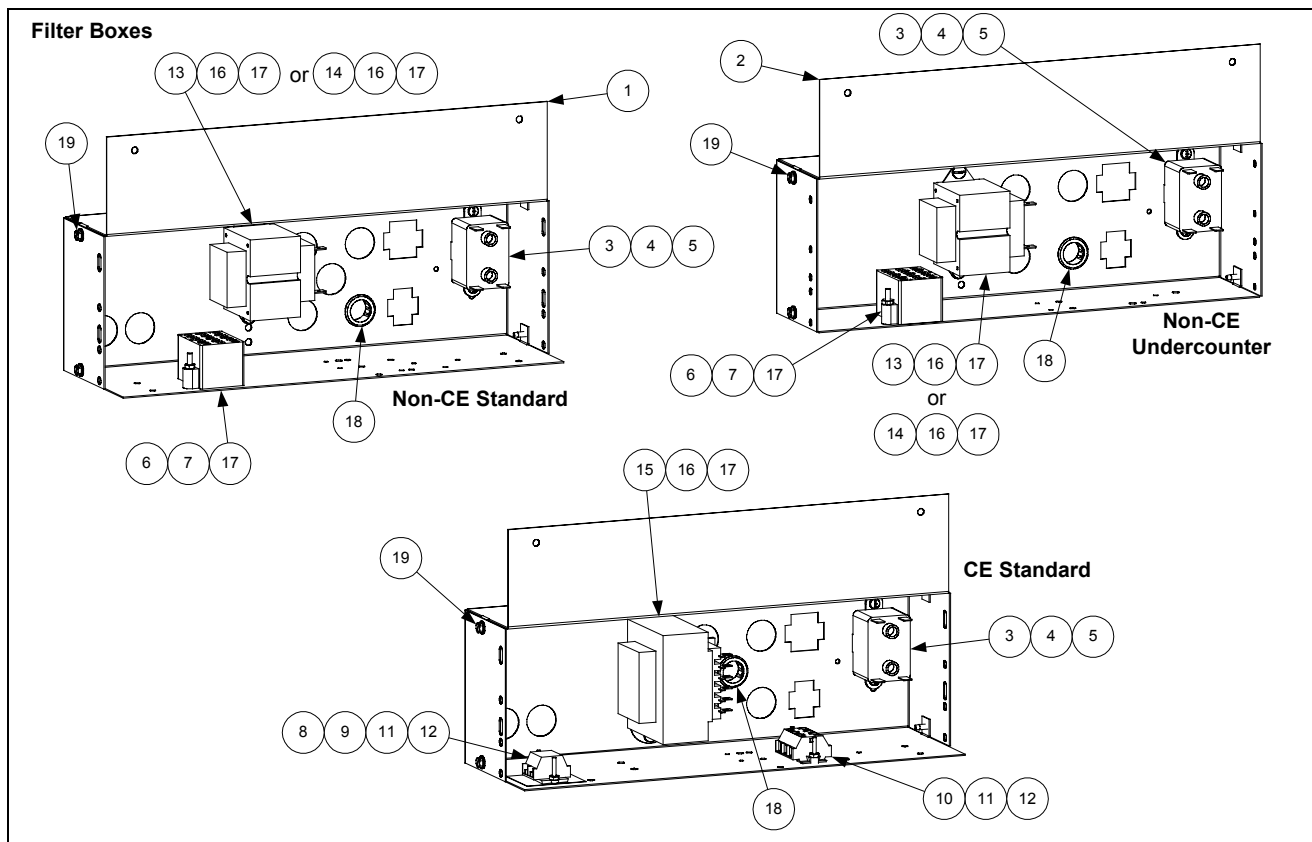


208-240V CE

Component Shield Assemblies without Interface Boards

ITEM	PART #	COMPONENT
		Complete Shield Assemblies
	806-4774SP	120V, 50/60 Hz without Melt Cycle Timer (Non-CE)
	806-4776SP	240V, 50/60 Hz without Melt Cycle Timer (Non-CE)
	806-4772SP	120V, 50/60 Hz with Melt Cycle Timer (Non-CE)
	806-4777SP	240V, 50/60 Hz with Melt Cycle Timer (Non-CE)
	806-6630SP	230V, 50 Hz without Melt Cycle Timer (CE)
	806-6632SP	230V, 50 Hz with Melt Cycle Timer (CE)
		Components
1	900-4340	Shield, Component
2	807-0066	Block, Terminal, 20-Pin
3	809-0097	Screw, 6-32 x 1-inch Slotted Truss Head
4	826-1358	Nut, 6-32 Hex (Pkg. of 25)
5	816-0217	Paper, Insulating
6	810-1164	Terminal Block, 6-Position
7	810-1168	Terminal Block, 8-Position
8	826-1359	Screw, 4-40 X 3/4-inch Slotted Round Head (Pkg. of 25)
9	826-1366	Nut, 4-40 Hex Keys (Pkg. of 25)
10	807-0800	Transformer, 100-120V Primary/24V Secondary 50/60 Hz 50VA
11		Transformer, 208-240V Primary/24V Secondary 50/60 Hz
	807-0680	20VA without fuse
	807-2180	50 VA with fuse
*	807-1597	Fuse, 3-Amp Slow-Blow (for use w/transformer 807-2180)
12	807-1999	Transformer, 208-240V Primary/12V and 24V Secondary Dual Voltage
13	826-1374	Screw, #10 x 1/2-inch Hex Washer Head (Pkg of 25)
14	810-0045	Bushing, Heyco (fits 1.25-inch hole)
15	807-2469	Bushing, Heyco (fits 7/8-inch (.875-inch) hole)
16	826-1546	Kit, Melt Cycle Timer (Items 17, 18, and 19) replaces electromechanical timer
17	806-9613	PC Board Assembly, Melt Cycle Timer (50 and 60 Hz)
18	900-8741	Bracket, Melt Cycle Timer
19	809-0580	Standoff, PC Board
20	807-0156	Plug, 9-Pin

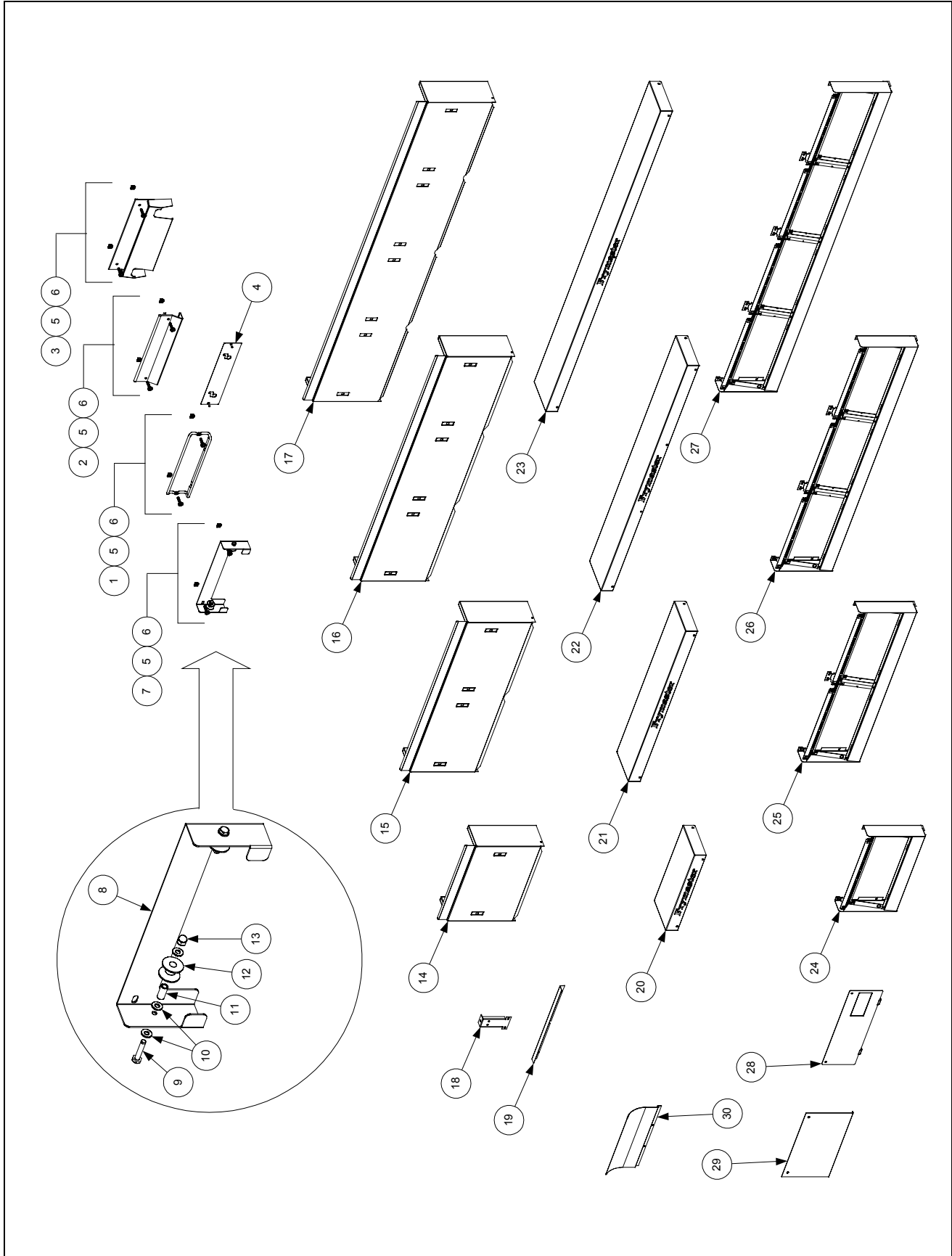
* Not illustrated.



ITEM	PART #	COMPONENT
		Complete Box Assembly
	806-4359SP	100-120V Standard Cabinet
	806-4360SP	208-240V Standard Cabinet (Non-CE)
	806-6709SP	230V Standard Cabinet (CE)
	806-4361SP	100-120V Undercounter Cabinet
	806-4362SP	208-240V Undercounter Cabinet (Non-CE)
		Components
1	200-0409	Box, Standard Filter Control
2	200-0410	Box, Undercounter Filter Control
3	807-0012	Relay, 15 Amp, SPST, Filter
4	809-0096	Screw, 6-32 X 5/8-inch Slot Head
5	826-1358	Nut, 6-32 Hex (Pkg. of 25)
6	807-0276	Terminal Block, 20-Position
7	809-0097	Screw, 6-32 X 1-inch Slotted Round Head
8	816-0217	Paper, Insulating
9	810-1164	Terminal Block, 6-Position
10	810-1168	Terminal Block, 8- Position
11	826-1359	Screw, 4-40 X 3/4-inch Slotted Round Head (Pkg. of 25)
12	826-1366	Nut, 4-40 Hex Keys (Pkg. of 25)
13	807-0800	Transformer, 100-120V Primary/24V Secondary 50/60 Hz 50VA
14	807-0680	Transformer, 208-240V Primary/24V Secondary 50/60 Hz 20VA
15	807-1999	Transformer, 208-240V Primary/12V & 24V Secondary Dual Voltage (CE)
16	809-0103	Screw, 8-32 X 1/2-inch Slotted Truss Head
17	809-0050	Nut, 8-32 Hex
18	807-0124	Bushing, Heyco (fits 7/8-inch (.875-inch) hole)
19	809-0360	Screw, #8 X 3/8-inch Washer Slotted Hex Head

THIS PAGE INTENTIONALLY LEFT BLANK

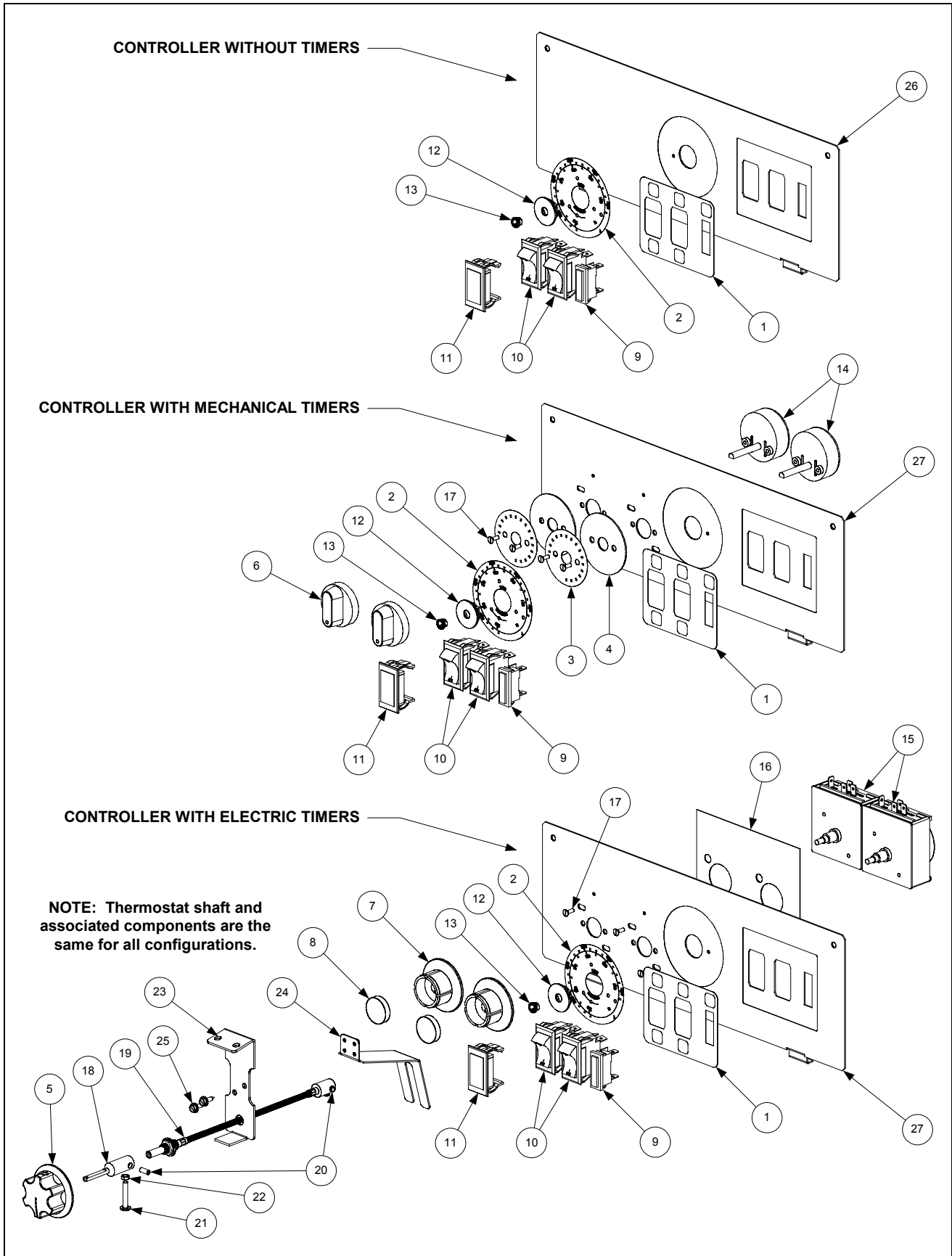
CONTROL PANEL ASSEMBLIES, FLUE CAPS, TOP CAPS, and RELATED ITEMS



ITEM	PART #	COMPONENT
1	810-1403	Basket Hanger, Wire Form
*	809-0921	Spacer, Wire Form Basket Hanger
2		Basket Hanger, Extruded Aluminum (No longer available; use 810-1403)
3	823-1462	Basket Hanger, Burger King
4	106-2185	Bracket, Burger King Easy-Off Basket Hanger (used w/Item 1)
5	809-0171	Thumbscrew, ¼-20 X 1⅝-inch Basket Hanger
6	826-1351	Nut, Cage (receives Basket Hanger Thumbscrew) (pkg of 10)
7	806-9257SP	Roller Assembly, Basket Lift (Complete)
8	910-8284	Bracket, One-Piece Roller Guide
9	826-1334	Capscrew, ¼ – 20 x 1¼” Stainless Steel Hex Head (pkg of 5)
10	809-0190	Washer, ¼” Stainless Steel Flat
11	810-0374	Spacer, Tubular
12	810-0194	Roller, Basket Lift Guide
13	809-0047	Nut, ¼ – 20 Cap (also used w/Item 4)
14		Flue Cap, Single Fryer, w/lip
	910-5018	Standard
	910-6545	Optional (without lip along flue opening)
	823-3749	Burger King with Button Studs (used w/Item 4)
15		Flue Cap, 2-Fryer Battery
	823-2540	Standard
	823-3536	Burger King with Button Studs (used w/Item 4)
16		Flue Cap, 3-Fryer Battery
	823-2541	Standard
	823-3537	Burger King with Button Studs (used w/Item 4)
17	823-2569	Flue Cap, 4-Fryer Battery
18	900-5486	Support, Flue Cap
19	900-4253	Flue Cap Retaining Strip
20	824-0404	Top Cap, Single Fryer
21	824-0405	Top Cap, Two-Fryer Battery
22	824-0406	Top Cap, Three-Fryer Battery
23	824-0407	Top Cap, Four-Fryer Battery
24	806-4732SP	Control Panel Assembly, Single Fryer
25	806-4733SP	Control Panel Assembly, 2-Fryer Battery
26	806-4734SP	Control Panel Assembly, 3-Fryer Battery
27	806-5018SP	Control Panel Assembly, 4-Fryer Battery
28	910-8503	Panel, FM Standard Cabinet Front
29	910-8505	Panel, FM Undercounter Cabinet Front
30	910-3557	Flue Deflector
*	826-1379	Screw, #10 X ½-inch Philips Head (pkg of 10) (attaches top cap)
*	826-1371	Screw, #8 X ½-inch Hex Washer Head (pkg of 25) (attaches flue cap)

* Not illustrated.

CONTROLLER ASSEMBLIES (Thermostat Controllers)

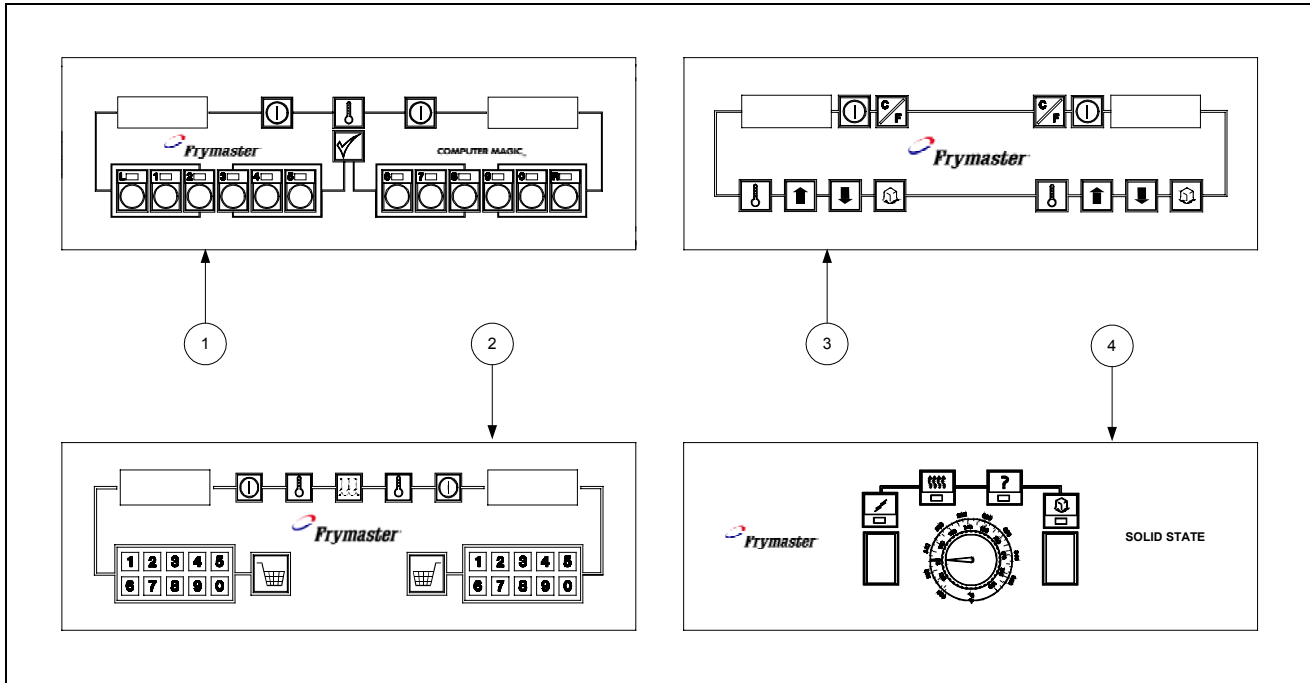


ITEM	PART #	COMPONENT
1	802-0765	Label, Control Panel
2	802-1470	Label, Thermostat Dial
3	802-1473	Label, 15-Minute Mechanical Timer Bezel
4	910-1551	Bezel, 15-Minute Mechanical Timer
5	810-0334	Knob, Operating Thermostat
6	810-1287	Knob, 15-minute Mechanical Timer
7	810-1822	Knob, 15-Minute Electrical Timer Replacement
8	810-1823	Push Button, White 15-Minute Electrical Timer Replacement
9	807-1525	Light, White Melt Cycle Indicator, 24V
10	807-3498	Switch, Melt Cycle Rocker, 24V
11	807-3575	Plug, Blank Switch (used on units without melt cycle option)
12	826-1395	Plug, Snap-in Reducer, S/S (Pkg of 10)
13	826-1338	Bushing, Plastic, Thermostat Shaft (Pkg of 25)
14	810-0585	Timer, 15-minute Mechanical Basket Lift
15		Timer, 15-Minute Electrical Basket Lift
	826-1552	100-120V
	807-0401	208-240V
16	950-0246	Insulation, Double Electric Timer
17	809-0093	Screw, 6-32 X 3/16-inch Slotted Flat Head
18	810-0276	Adapter, Shaft End
19	810-0999	Shaft, Flexible
20	809-0157	Set Screw
21	826-1361	Stop Screw (Pkg of 25)
22	809-0050	Nut, 5-32 Hex
23	900-2241	Bracket, Thermostat
24	900-2071	Bracket, Thermostat Shaft Guide
25	826-1371	Screw, #8 X 1/2-inch Slotted Hex Washer Head (Pkg. of 25)
26	910-4345	Panel, Thermostat Control without Timers
27	910-4344	Panel, Thermostat Control with Electric or Mechanical Timers
*	802-0336	Label, Frymaster Logo
*	806-4797	Alarm, Open Drain (Buzzer)

* Not illustrated.

NOTE: See Pages 2-16 and 2-17 for melt cycle timers.

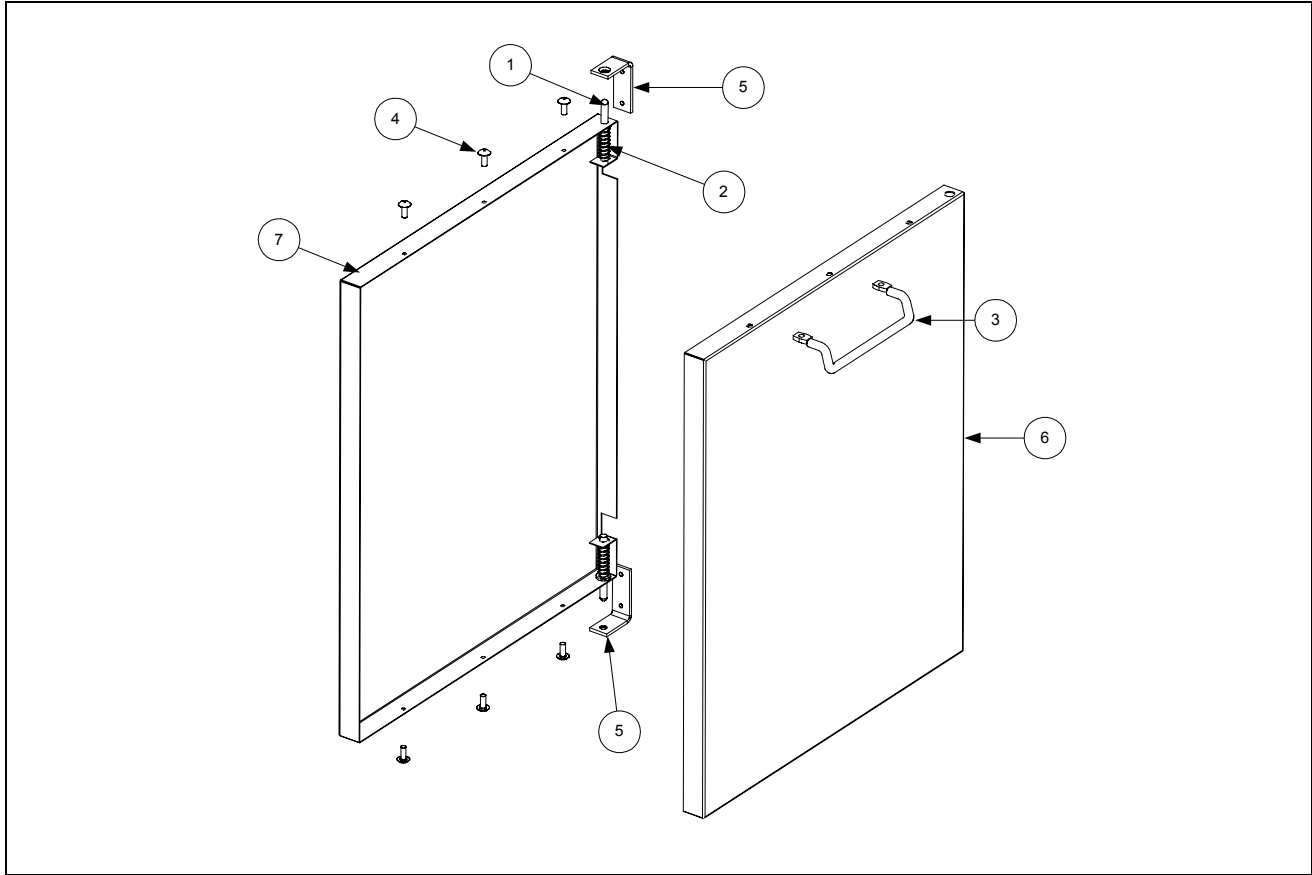
CONTROLLER ASSEMBLIES (Other than Thermostat Controllers)



ITEM	PART #	COMPONENT
1		Computer Magic III
	106-1149SP	Built-In, Non-CE
	106-1199SP	Built-In CE
	106-1216	Remote LP03
	106-1218	Remote On-Hood
	106-1230	Remote In-Hood
2	106-2079SP	Controller, Basket Lift Timer
3		Controller, Digital
	106-1501	Non-CE
	106-1505	CE
4	806-3559	Controller, Solid State (<i>controller knob is 810-0387</i>)
*	910-3690	Panel, Blank Control (<i>for use on fryers with remote computers</i>)
*	806-3660	Sound Device (<i>for use w/all CM III Computers</i>)
*	826-1379	Screw, #10 X ½-inch Philips Truss Head (computer screws) (Pkg. of 10)
*	826-1032SP	Kit, Control Panel Screws (2 screws and 2 screw retainers)

* Not illustrated.

DOOR ASSEMBLY

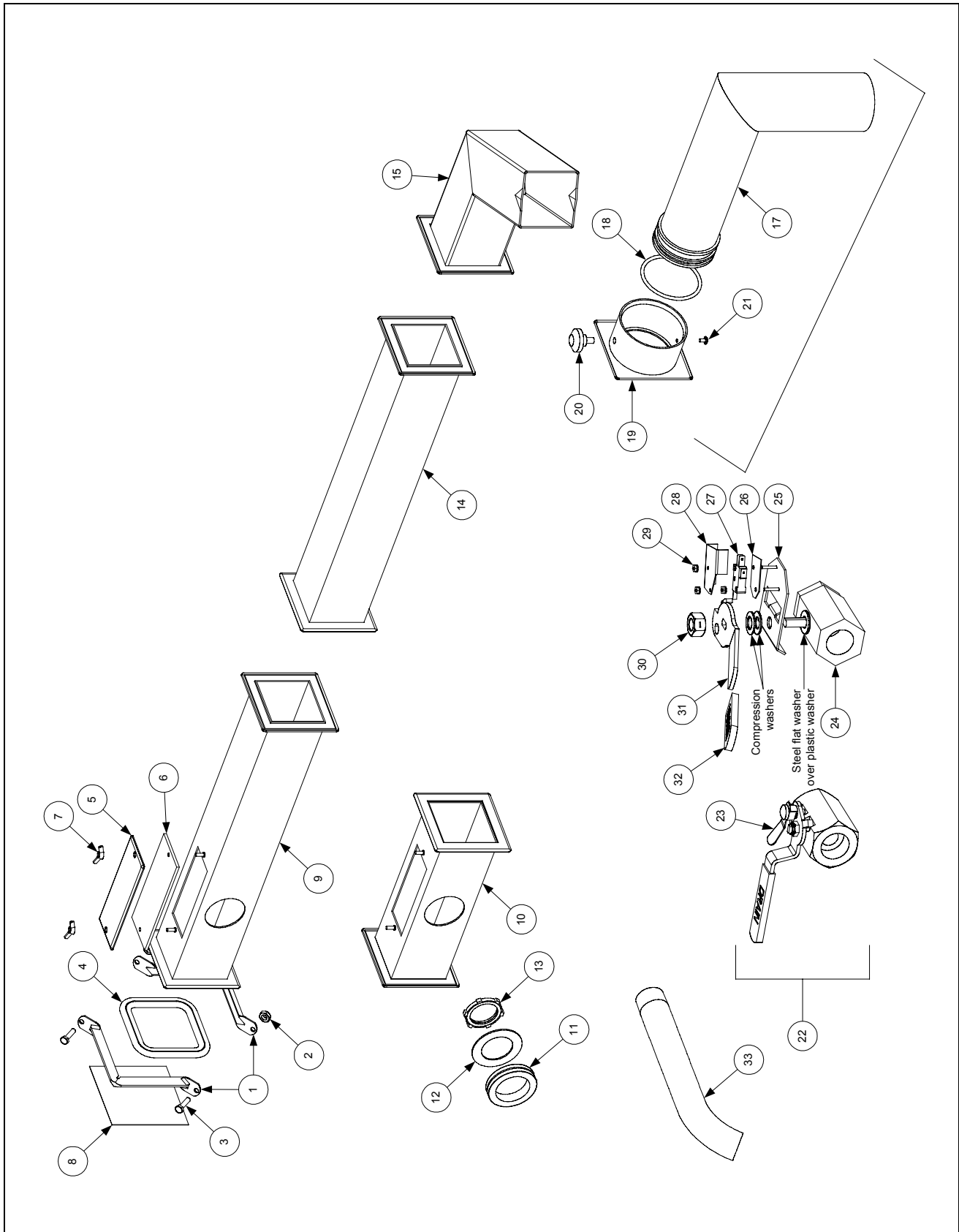


ITEM	PART #	COMPONENT
	806-8320	Door Assembly Complete, Enameled Steel (does not include Items 3 and 5)
	806-6405SP	Door Assembly Complete, Stainless Steel (does not include Items 3 and 5)
1	106-0554SP	Door Pin Assembly
2	826-1343	Spring, Door Pin
3	810-1422	Handle, Door, Wireform, Stainless Steel (<i>must be ordered separately</i>)
4	826-1379	Screw, #10 x 1/2" Phillips Head, Zinc Plated
5	810-1508	Hinge, Door, Universal (<i>must be ordered separately</i>)
6	824-0616SP	Panel, Door, Outer
7	900-4807	Liner, Door
*	810-1105	Magnet, Door

* Not illustrated.

DRAIN AND FILTRATION SYSTEM COMPONENTS

Drain System Components

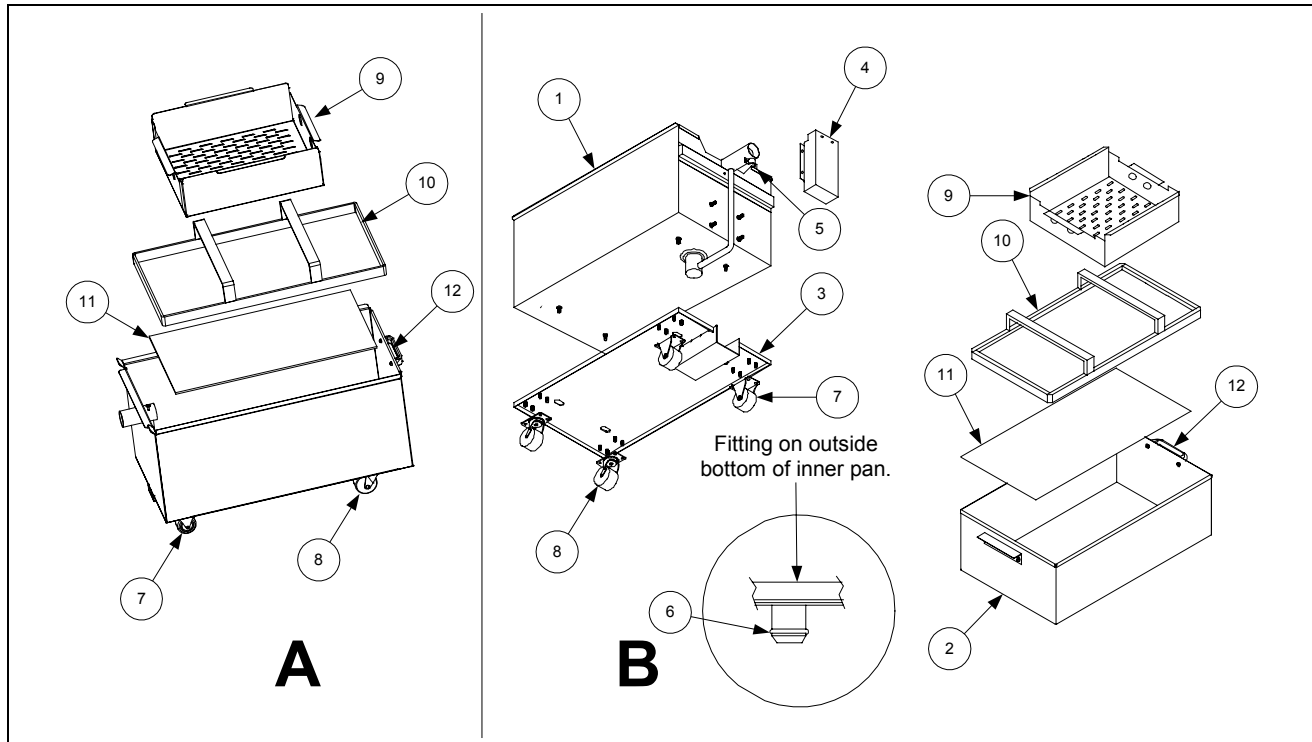


Item	Part #	Component
*	826-0877	Kit, Clamp Service (Contains 2 each of Items 1-3 and 1 of Item 4)
1	810-0396	Clamp Section (Requires 2 per connection)
2	809-0071	Nut, ¼–20
3	826-1375	Screw, 10–32 X ¾
4	816-0032	Seal (Connection Gasket)
5	826-1348	Cover, Clean-out (Pkg. of 5)
6	816-0021	Gasket, Clean-out
7	826-1382	Wing Nut, Clean-out Cover Retaining (Pkg. of 10)
8	900-0757	Cover, Drain End
9	823-0717	Full Vat, 15.5-inches Long
10	823-0718	End, Full Vat, 8.12-inches Long
*	813-0284	Nipple, 1-inch x ¾-inch (connects drain valve to drain tube)
11		Grommet, Drain Tube
	816-0092	1.50-inch I.D.
	816-0091	1.75-inch I.D. (used on FM I units built prior to February 1990 only)
12	826-1345	Washer, Drain Tube Retaining (Pkg of 25) (1⅜-in. ID x 2 ³ / ₁₆ -in. OD)
13	809-0347	Nut, Drain Tube Retaining
14	823-0731	Extension, Spreader Cabinet, 15.5-inches Long
15	823-0719	Drain Outlet, Fixed
16	806-4068	Drain Outlet Assembly, Swivel
17	823-1091	Drain Tube, Swivel
18	816-0083	O-Ring, 2.5-inches ID
19	823-1092	Collar, Drain
20	810-0388	Knob, Clamping
21	809-0115	Screw, 10–32
22	810-1569	Valve w/Handle, 1.25-inch Drain (for use on MJ45 units)
23	810-1568	Handle w/Lock, Drain Valve
24	810-1020	Valve, 1.25-inch Drain (for use on FM45 units)**
25	806-8137	Bracket, Drain Safety Switch
26	816-0220	Insulation, Drain Safety Switch
27	807-2103	Switch, Drain Safety
28	900-2841	Cover, Drain Safety Switch
29	809-0237	Nut, 4-40 Keps Hex
30	809-0540	Nut, ½-inch 2-Way Lock
31	810-0820	Handle, Drain Valve w/o Lock
32	816-0211	Sleeve, Drain Valve Handle
33	812-1226SP	Extension, Drain

* Not illustrated.

** For old-style valve with welded-on switch bracket, use 823-1363.

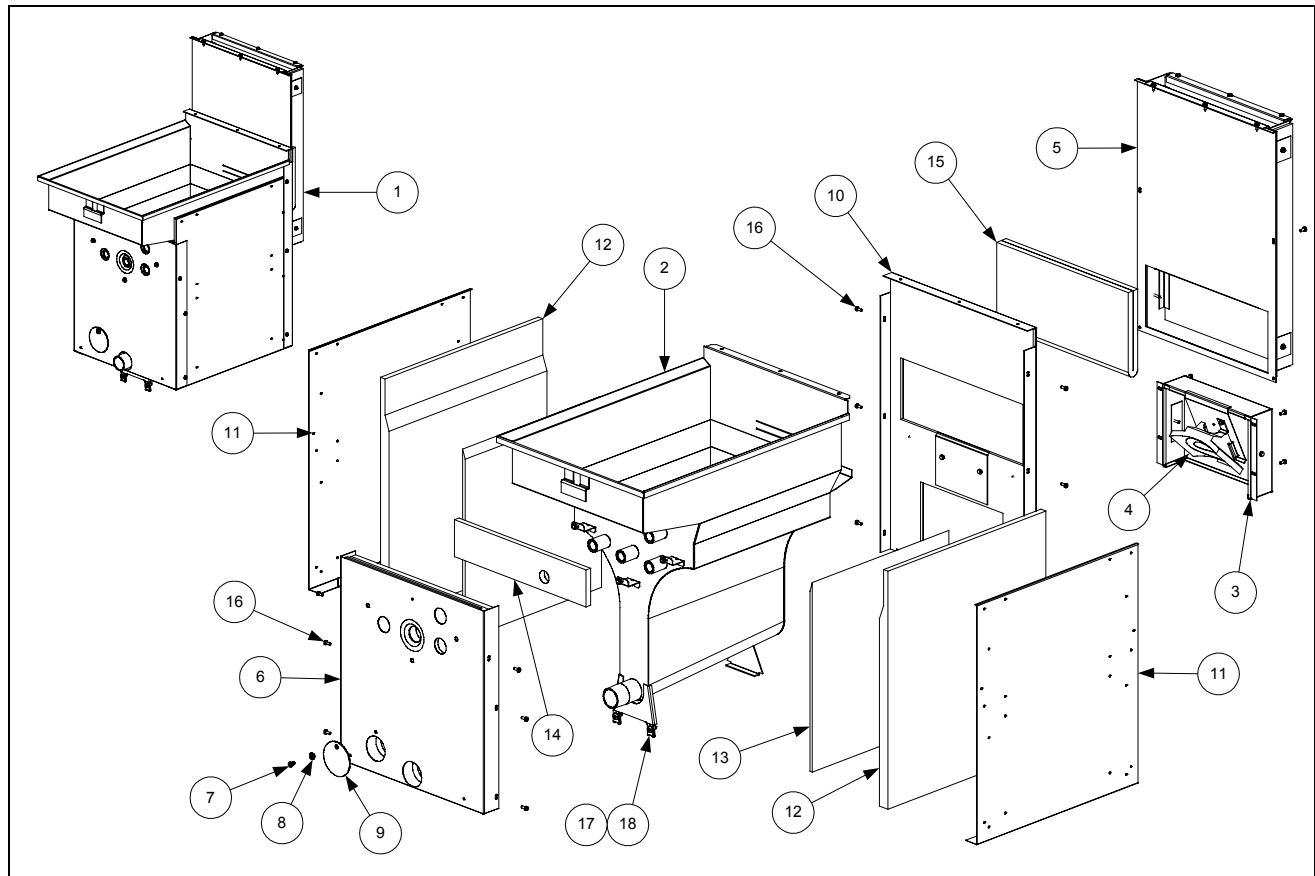
Filter Magic II Filter Pan Assemblies



Item	Part #	Component
A	806-9255SP	One-Piece Filter Pan Assembly (Items 7, 8, 10, 11, and 12)
	823-2751SP	One-Piece Filter Pan
B	806-6093SP	Two-Piece Pan Assembly (Unique components are listed below.)
	806-4338SP	Outer Pan Assembly (Items 1, 3, 4, 5, 7, 8, and 806-4373)
1	823-1360SP	Outer Pan
	806-5282SP	Inner Pan Assembly (Items 2, 6, 10, 11, and 12)
2	823-1731SP	Inner Pan
3	823-1361	Base, Filter Pan Assembly
4	824-0291	Cover, Suction Tube
5	910-1350	Clamp, Suction Tube
6	816-0117	O-Ring, .609 OD
*	806-4373	Heater Strip Assembly
*	811-0861	Insulation, Foam (50-foot/15m roll)
*	811-0746	Tape, Aluminum Insulation (50-yard/46m roll)
		Components Used in Both Designs
7	810-0005	Caster, Rigid
8	810-0006	Caster, Swivel
9	824-0416	Crumb Screen
10	810-1406	Hold Down Ring Assembly
11	900-8827	Sanagrid Filter Screen
12	810-0180	Handle, Filter Pan
*	803-0170	Paper, Filter (100 sheets)
*	803-0002	Powder, Filter (80 1-cup applications)

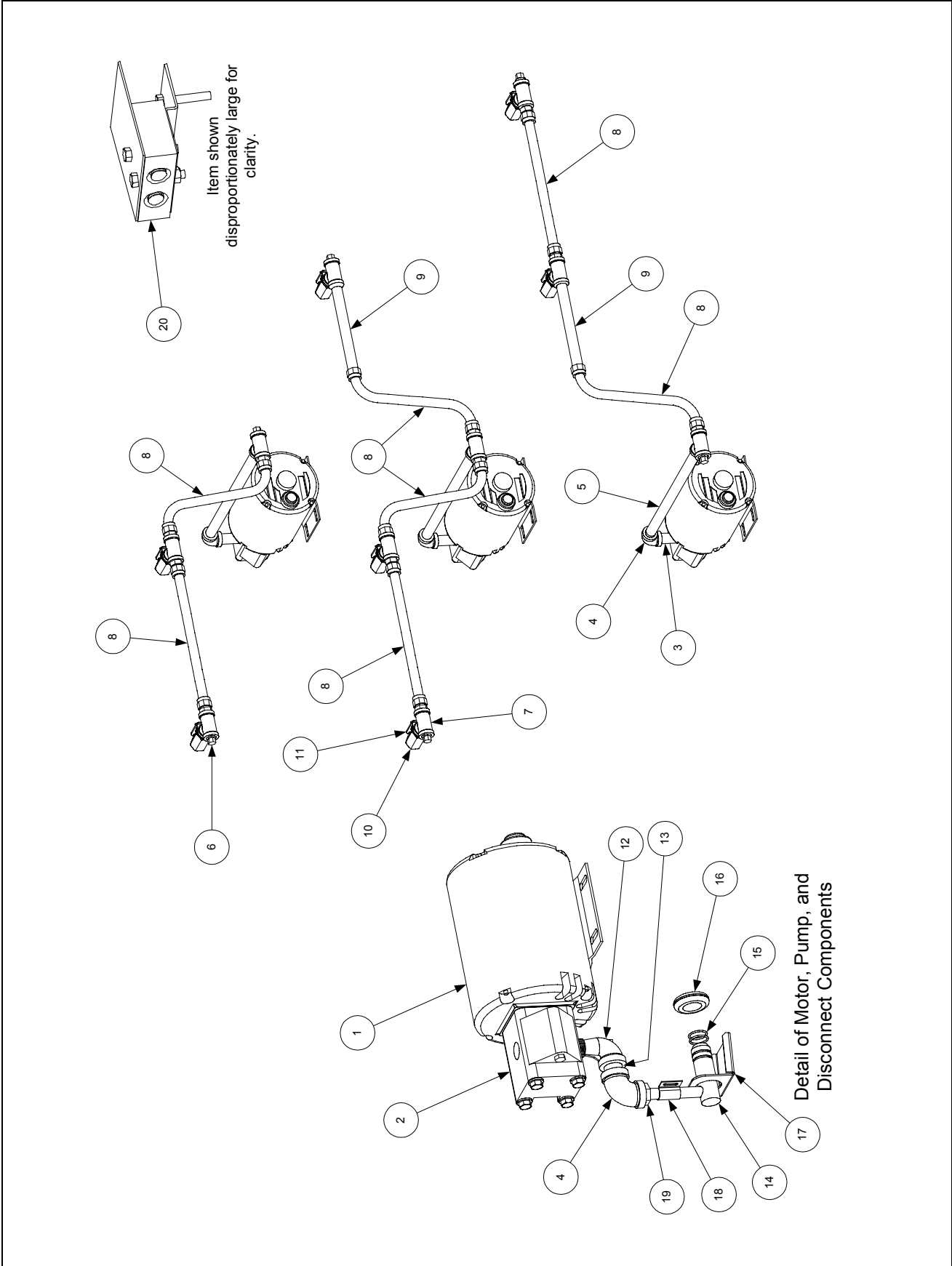
* Not illustrated.

FRYPOT ASSEMBLIES AND COMPONENT PARTS



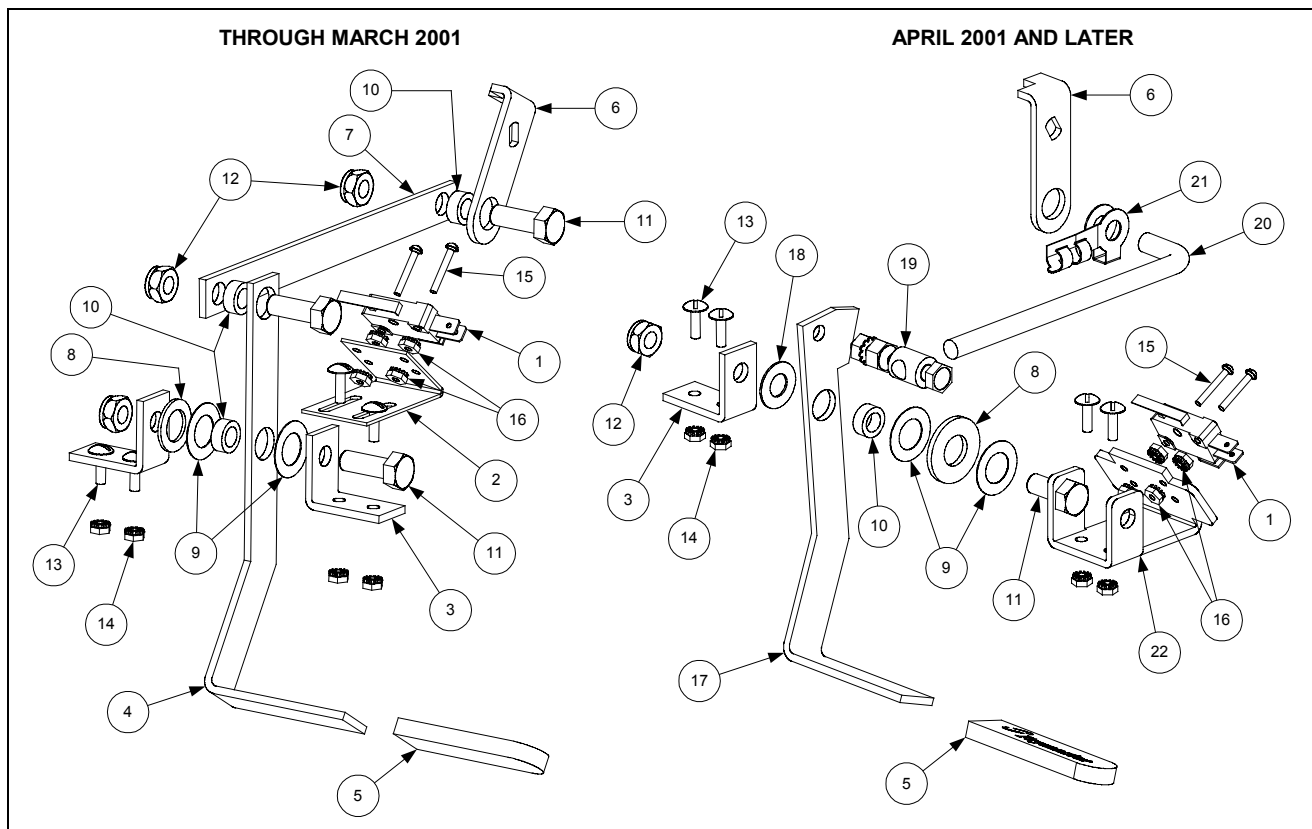
ITEM	PART #	COMPONENT
1		Frypot Assemblies, Complete (Items 2, 3, 5, 6, and 10-18)
	106-2549SP	Stainless Steel
	806-3810SP	Cold Rolled Steel
2		Frypot Assembly, without Insulation
	823-3887SP	Stainless Steel (integral component of 106-2549SP)
	823-0921SP	Cold Rolled Steel (integral component of 806-3810SP)
3	806-5778SP	Flue Deflector Box Assembly,
4	810-0424	Deflector, Rear Burner (integral component of Item 3)
5	806-5567SP	Flue Assembly
6	806-1095SP	Front Baffle Assembly
7	809-0409	Screw, Pilot Light Cover (integral component of Item 6)
8	810-0647	Holder, Pilot Light Cover Screw (integral component of Item 6)
9	900-1090	Cover, Pilot Light (integral component of Item 6)
10	806-5566SP	Rear Combustion Chamber Panel Assembly
11	900-6441	Panel, Combustion Chamber Side
12	812-0249	Insulation, Frypot Side, Outer Layer
13	812-0248	Insulation, Frypot Side, Inner Layer
14	816-0602	Insulation, Kaowool Blanket, 1/2 X 14 X 4 (trim to fit)
15	812-0269	Insulation, Kaowool Blanket, 1/2 x 14 x 14
16	826-1374	Screw, #10 X 1/2-inch Washer Hex Head (Pkg. of 25)
17	809-0173	Clip, Tinnerman
18	809-0170	Screw, #14 X 3/4-inch Slotted Pan Head

OIL RETURN PLUMBING AND HANDLE COMPONENTS



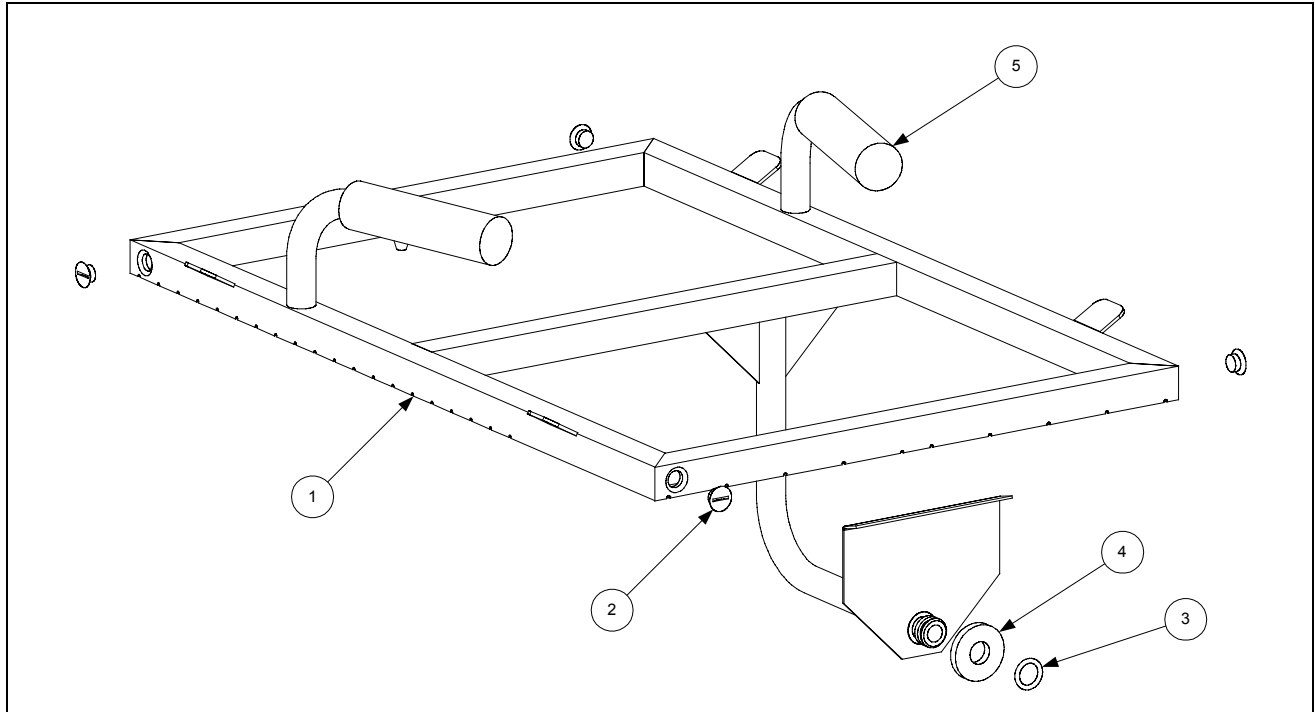
ITEM	PART #	COMPONENT
1		Pump Motor
	826-1712	100-120 VAC 50/60Hz (includes gasket 816-0093)
	826-1756	208 VAC 50/60 Hz (includes gasket 816-0093)
	826-1270	230-250 VAC 50/60 Hz (includes gasket 816-0093)
*	806-6728SP	Pump Motor Wiring Assembly (used with above motor kits)
2	826-1264	Pump, 4 GPM (15 LPM) (includes gasket 816-0093 and mounting screws)
3	813-0265	Nipple, ½-inch x 2 ½-inch
4	813-0062	Elbow, ½-inch x 90°
5	813-0368	Nipple, ½-inch x 16-inch
6	813-0156	Pipe Plug, ½-inch
7	813-0003	Tee, ½-inch
8	810-1057	Flexline, 13-inch Oil Return (has female ends)
*	810-1668	Adapter, Male (used with Item 8; two required)
9	813-0275	Nipple, ½-inch x 9-inch
10	810-0278	Valve, ½-inch Ball
11	902-0883	Handle, Valve
12	813-0165	Elbow, ½-inch x 90° Street
13	813-0022	Nipple, ½-inch Close
14	823-1356	Disconnect Fitting
15	826-1392	O-Ring (pkg of 5)
16	816-0102	Grommet, Oil Diverter
17	900-1472	Diverter, Oil
18	910-1627	Bracket, Male Disconnect Support
19	813-0330	Bushing, ½-inch NPT to ½-inch Tube
20	806-4694SP	Contacto Block Assembly
*	813-0117	Nipple, ½-inch x 3½-inch
*	807-1600	Thermal Switch, 100-120V Baldor Motors
*	807-1601	Thermal Switch, 200-250V Baldor Motors
*	807-1598	Thermal Switch, 100-120V Magnatek Motors
*	807-1599	Thermal Switch, 200-250V Magnatek Motors
*	807-2016	Wiring Harness, Controller to Filter
*	807-1408	Heater Strip, 120VAC 50W, 70-inch
*	807-2050	Heater Strip, 250VAC 90W, 70-inch
*	811-0746	Tape, Aluminum (2-inch x 50-yard (46m) roll)

* Not illustrated



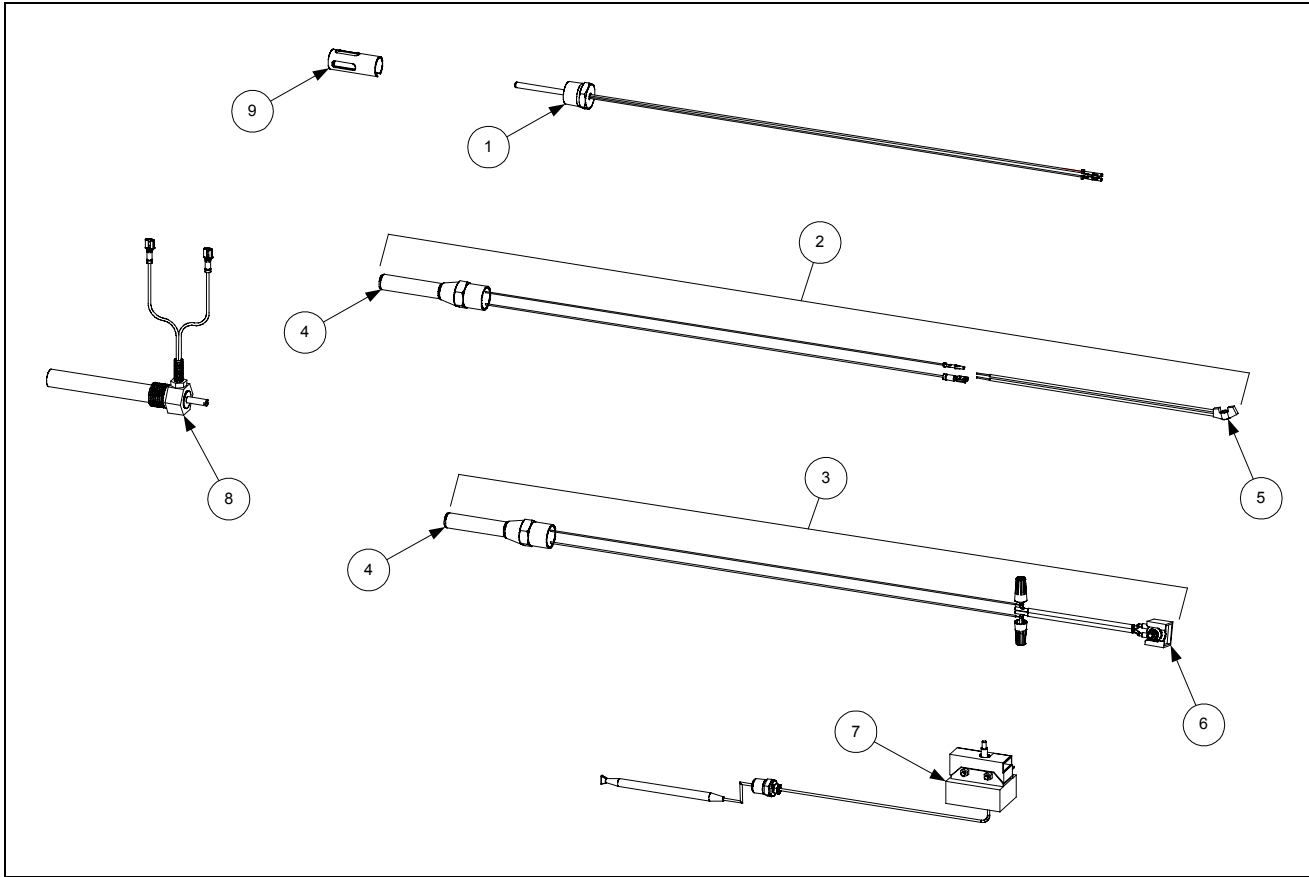
ITEM	PART #	COMPONENT
1	807-2103	Microswitch
2	930-0839	Bracket, Microswitch
3	810-1999	Bracket, Valve Handle
4	900-1853	Handle, Oil Return
5	814-0047	Sleeve, Handle
6	900-0239	Arm, Oil Return Valve
7	920-0220	Linkage, Oil Return Valve
8	809-0200	Washer, Flat
9	826-1381	Washer, Nylatron (Pkg of 10)
10	810-0220	Spacer, Tubular, .493 OD
11	809-0142	Screw, 5/16 – 24 x 3/4" Hex Head
12	809-0056	Nut, 5/16 – 24, Hex Head, Nylon Lock
13	809-0104	Screw, 4 – 32 x 1/2" Slotted Truss Head
14	809-0247	Nut, Keps Hex, 8 – 32
15	826-1359	Screw, 4 – 40 x 3/4" Slotted Pan Head (Pkg of 25)
16	826-1366	Nut, Keps Hex, 4 – 40 (Pkg of 25)
17	200-0938	Handle, Oil Return
18	810-1165	Washer, Teflon 0.372 I.D. X 0.753 O.D.
19	810-0285	Swivel, Oil Return Linkage Rod
20	200-1059	Rod, Oil Return Linkage
21	809-0601	Clip, Clevis
22	200-0821	Bracket, Microswitch

POWER SHOWER ASSEMBLY



ITEM	PART #	COMPONENT
1	806-4503SP	Power Shower Assembly, Complete
2	809-0415	Screw, Cleanout
3	826-1344	O-Ring (Pkg of 5)
4	826-1390	Seal (Gasket) (Pkg of 5)
5	814-0001	Grip, Handle

TEMPERATURE PROBE, THERMOSTATS, AND RELATED COMPONENTS



ITEM	PART #	COMPONENT
1	806-4206	Temperature Probe, Minco
2	826-1177	Thermostat, Non-CE 425°F High-Limit (see NOTE 1)
3	806-7550	Thermostat, CE 218°C High-Limit (see NOTE 2)
4	807-2274	Thermostat, High Limit
5	807-0280	Adapter, High-Limit Thermostat (used only with Robertshaw gas valves)
6	812-1256SP	Adapter Kit, High-Limit Thermostat to Honeywell Gas Valve
7	806-3910	Thermostat Assembly, Navy High-Limit (push-button reset)
8	806-0183	Thermostat Assembly, Operating
9	210-0681	Probe Guard

NOTE 1: Kit 826-1177 (Item 2) contains high-limit thermostat 807-7224 (Item 4), Adapter 807-0280 (Item 5) and an assortment of connectors to allow it to be configured for use on several different Robertshaw valves.

NOTE 2: Assembly 806-7550 (Item 3) contains high-limit thermostat 807-2274 (Item 4) and screw-in gas valve adapter kit 812-1256SP (Item 6) for connection to Honeywell gas valves.

WIRING ASSEMBLIES/HARNESSES AND REMOTE CABLE ASSEMBLIES

Wiring Assemblies and Harnesses	
806-2079SP	100-120V Basket Lift Universal Motor (6-Pin female w/6 wires plus 1 separate wire)
806-8555SP	208-240V Modular Basket Lift Motor (6-Pin female w/6 wires plus 4 separate wires)
106-1822SP	100-120V Modular Basket Lift Motor (12-pin female w/5 wires)
106-1804SP	208-250V Modular Basket Lift Motor (12-pin female w/5 wires plus 3 separate wires)
806-4798SP	Basket Lift Power, Non-CE (6-pin male w/6 wires; connects to 806-2079SP or 806-8555SP)
806-6708SP	Basket Lift Power, CE (6-pin male plus 806-4798)
807-3699	Basket Lift Power, Non-CE/CE (12-pin male w/6 wires, connects to 106-1822SP or 106-1804SP)
806-9777SP	Thermostat Control Universal (control panel-end connections)
806-9778SP	Thermostat Control Universal (component shield-end connections)
806-9779SP	Basket Lift Universal (control panel-end connections)
806-9780SP	Basket Lift Universal (basket lift-end connections)
806-9781SP	Wiring Bundle, Component Shield to Controller and Fryer Components (21-wire bundle)
826-1560	Kit, 45 Series Wiring (contains 806-9777SP through 806-9781SP)
806-3549SP	Interface Board (interface board to fryer components; 12-pin male w/5 wires)
806-6705SP	CE Non-Direct Wiring Power Supply (power cords joined in junction box)
806-4214SP	Fryer to Fryer Drain Safety Switch (2-pin male w/two wires and 2-pin female w/two wires)
806-4215SP	Fryer to Filter Drain Safety Switch (2-pin male w/two wires and 2-pin female w/two wires)

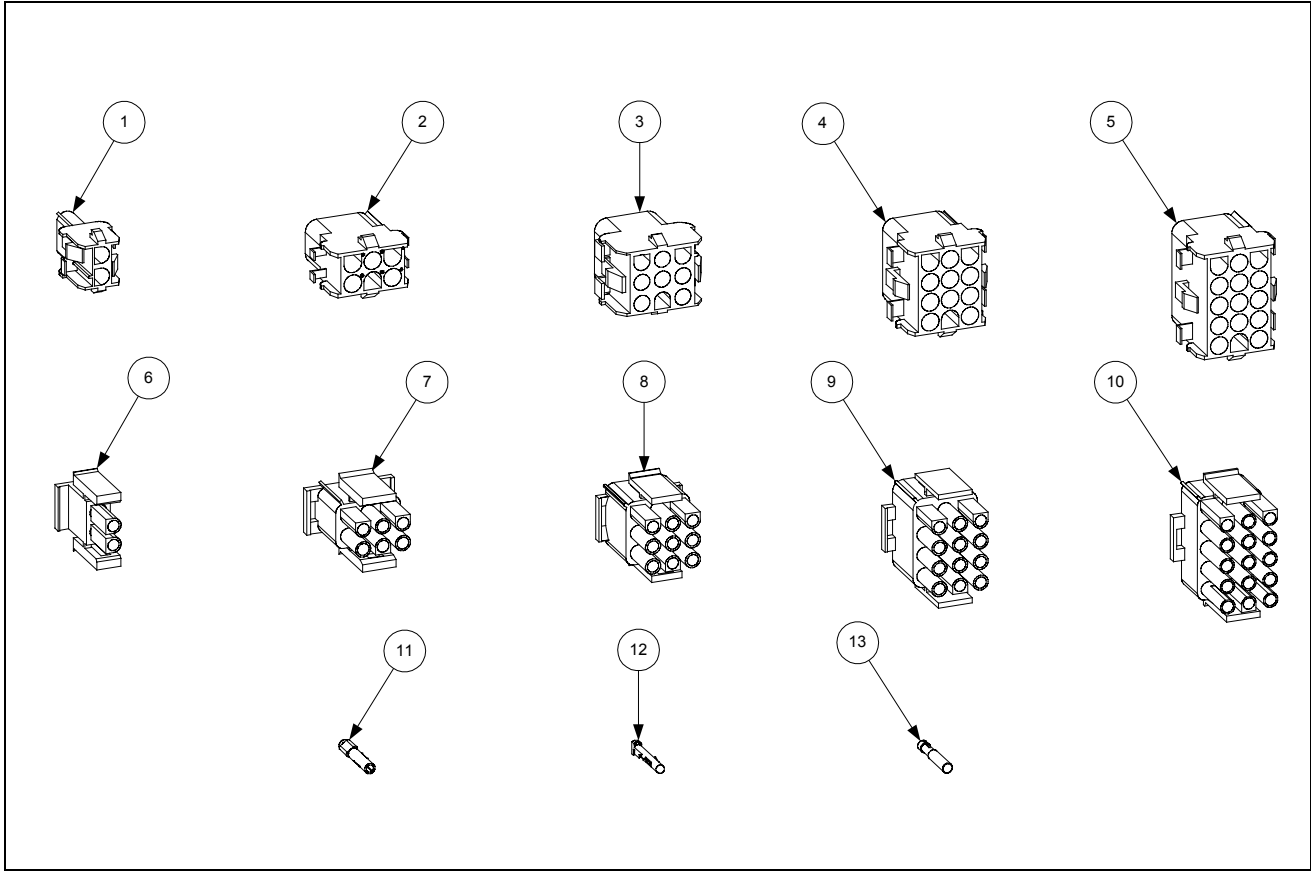
NOTE: Assemblies 806-2079SP, 806-9777SP through 806-9781SP and kit 826-1560 are “universal” in nature. That is, they contain all wires and connectors necessary for all configurations of the application described. Consequently, there may be “extra” wires that are not needed in a particular configuration. Any extra wires should be removed when the assemblies are installed to preclude later confusion.

Remote Computer/Controller to Interface Board Cables	
Each of these assemblies has two 15-pin male connectors, and a 15-wire cable looped through a ferrite ring. Only the length of the cable varies.	
806-2071	1.0 foot (30.5cm)
806-3383	15.0 feet (4.6m)
806-3388	20.0 feet (6.1m)
806-4318	30.0 feet (9.1m)

Remote Computer/Controller Cable Assemblies	
Each of these assemblies has one 15-pin male connector, one 15-pin female connector, and a 15-wire cable. Only the length of the cable varies.	
806-3528	7.5 feet (2.3m)
806-3529	8.5 feet (2.6m)
806-3530	10.5 feet (3.2m)
806-3531	12.6 feet (3.8m)

Remote Computer/Controller Cable Assemblies w/Junction Box and Mounting Bracket	
Each of these assemblies consists of a 4 X 4-inch junction box and mounting bracket assembly with one to four 15-pin female connectors and one to four 15-wire cables with a 15-pin male connector on the free end of each cable.	
806-8350	One Computer/Controller
806-8349	Two Computers/Controllers
806-8348	Three Computers/Controllers
806-8351	Four Computers/Controllers

WIRING CONNECTORS, PIN TERMINALS, AND POWER CORDS



ITEM	PART #	COMPONENT
Power Cords		
*	807-0154	100/120V-15A w/grounded plug
*	806-6229SP	100/208/240V-15A, w/o plug
*	807-1685	100/208/240V-18A, w/o plug
Connectors		
1	807-1068	2-Pin Female
2	807-0158	6-Pin Female
3	807-0156	9-Pin Female
5	807-0159	12-Pin Female
5	807-0875	15-Pin Female
6	807-1067	2-Pin Male
7	807-0157	6-Pin Male
8	807-0155	9-Pin Male
9	807-0160	12-Pin Male
10	807-0804	15-Pin Male
11	826-1341	Terminal, Female Split Pin (Pkg of 25)
12	826-1342	Terminal, Male Split Pin (Pkg of 25)
13	807-2518	Plug, Mate-N-Lock (Dummy Pin)

* Not illustrated.