



# Ultimate Electric Series Fryers Service & Parts Manual



Frymaster/Dean, a member of the Commercial Food Equipment Service Association, recommends using CFESA Certified Technicians.

**24-Hour Service Hotline 1-800-551-8633**

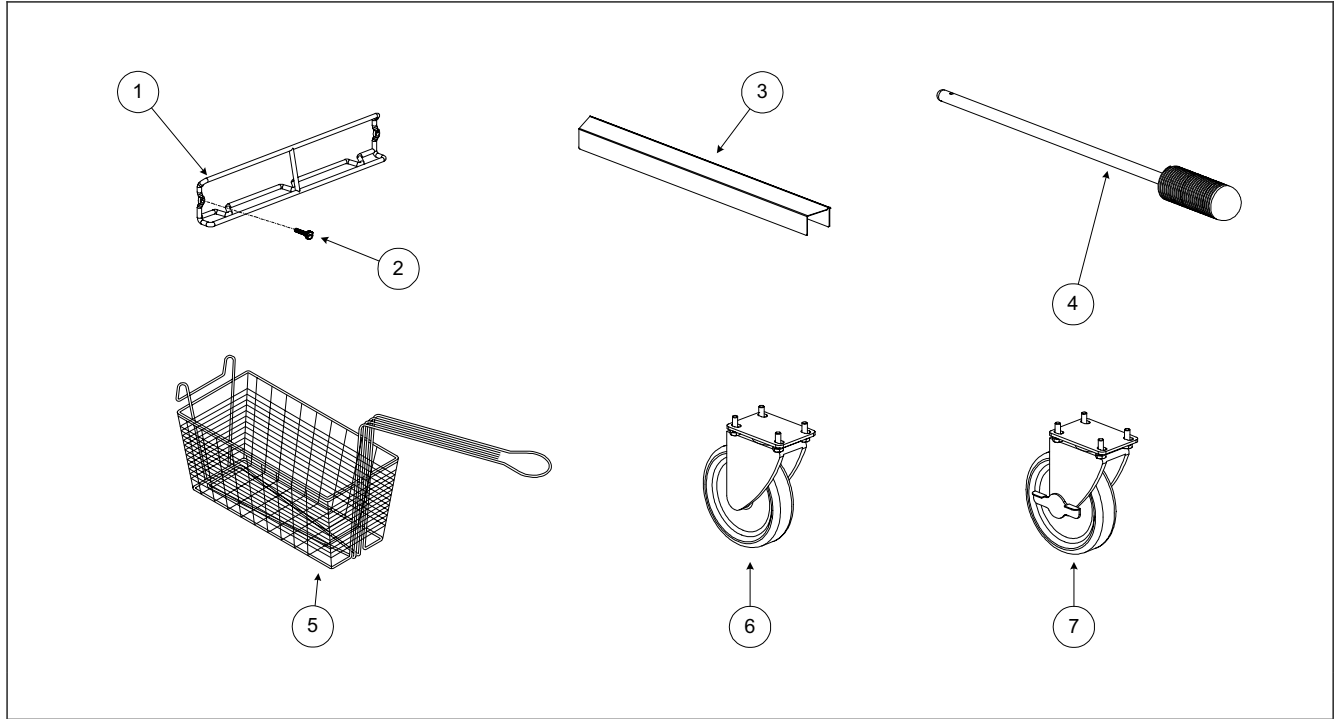
**Price: \$28.00**

**819-5981  
JUNE 2003**

# ULTIMATE ELECTRIC SERIES FRYERS

## CHAPTER 2: PARTS LIST

### 2.1 Accessories

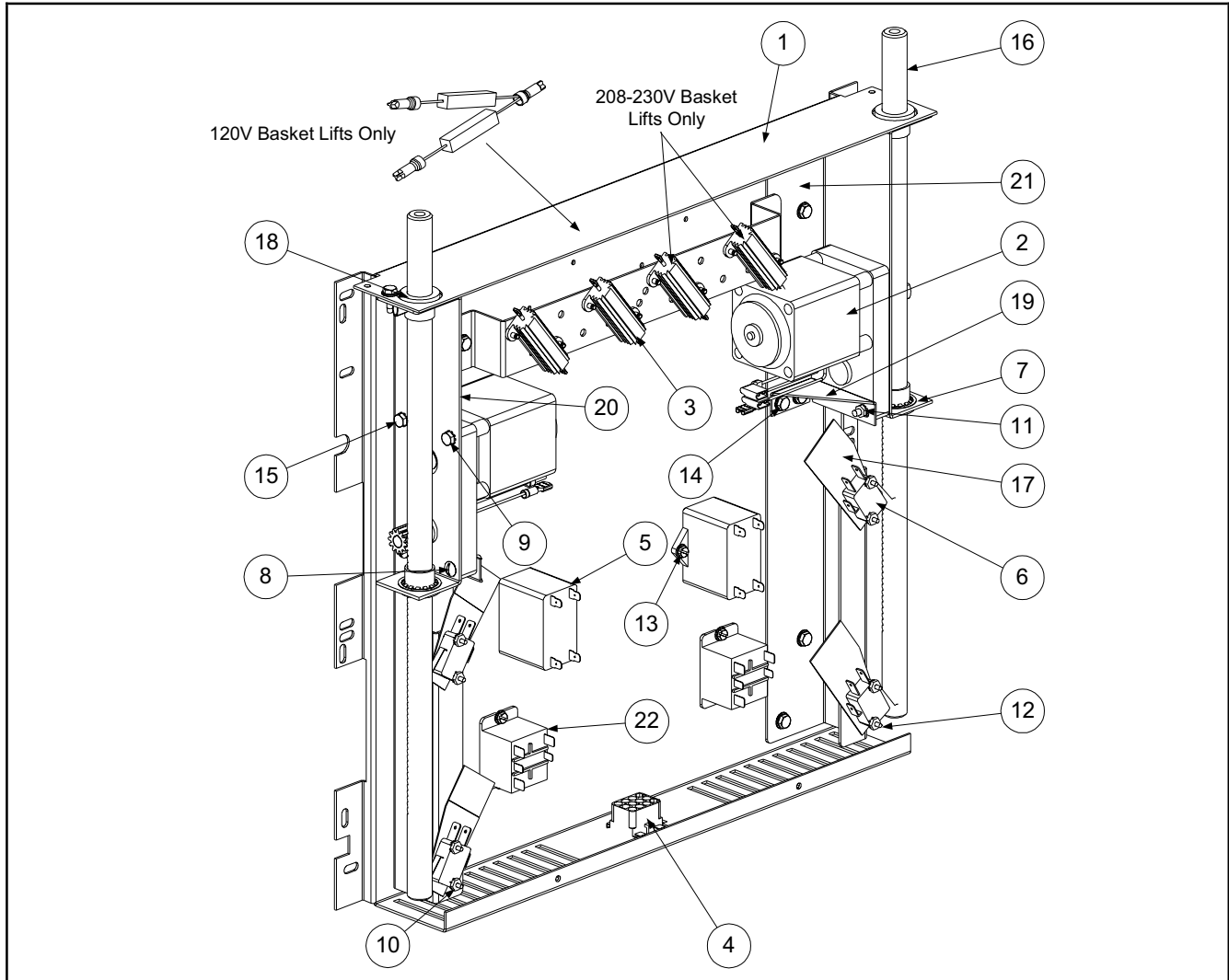


Item	Part Number	Description
1	810-2092	Basket Hanger
*	106-1968	Cover, Vat- <u>All Ultimate Electrics</u>
2	809-0171	Thumbscrew, Basket Hanger
3	210-1288	Joiner Strip
4	803-0209	Brush, Frypot
*	810-2120	Grid, Frypot W/Standoff
*	803-0149	Grid, Frypot- FPH1721 Systems
5	803-0306	Fry Basket, Twin Basket
*	803-0017	Fry Basket, Full Basket
6	826-1117	Caster, 5"- W/O Brake (Mounting Hardware Included)
7	826-1118	Caster, 5"- With Brake (Mounting Hardware Included)
*	803-0197	Fryer's Friend (Clean-out Rod)

\* Not Illustrated

**ULTIMATE ELECTRIC SERIES FRYERS**  
**CHAPTER 2: PARTS LIST**

**2.2 Basket Lift Assembly (Modular) and Related Components**



Item	Part Number	Description
1	200-2564	Mount, Basket Lift Assembly
2	806-5964	Motor Assembly- All EH1721 Basket Lifts
3	106-2770SP	Resistor Assembly, 200/208/220V
*	106-2771SP	Resistor Assembly, 230/240/250V
	806-8530SP	Resistor Assembly, 120V (Used On 480V Fryers)
*	807-2661	Resistor, 13 Ohm-120V (For 480V Fryers)
*	807-3893	Resistor, 50 Ohm- 200V/250V (For 208/220V and 230/250 Fryers)
*	807-2511	Resistor, 25 Ohm- 230V/250V (For 230/250V Fryers)
* Not Illustrated		

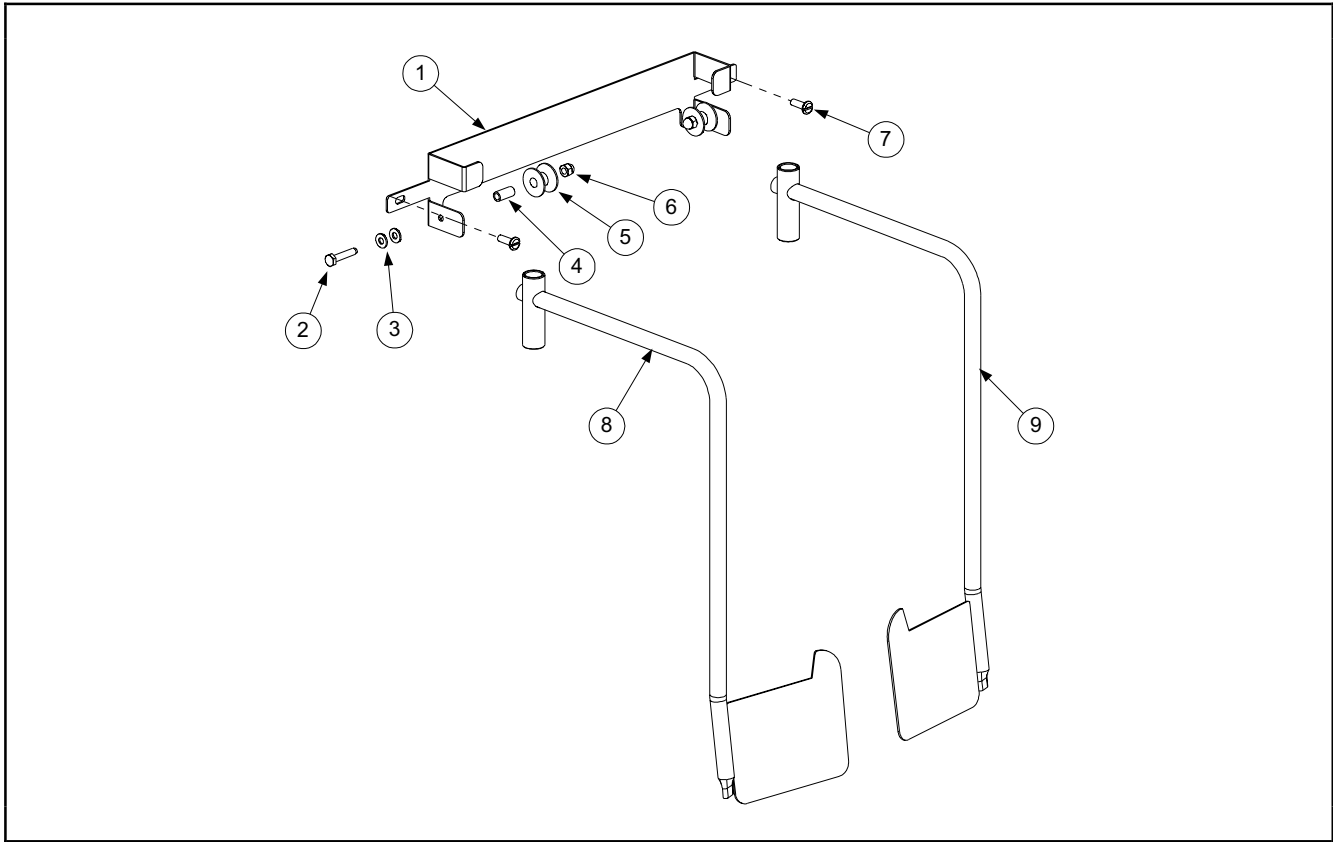
**ULTIMATE ELECTRIC SERIES FRYERS  
CHAPTER 2: PARTS LIST**

**2.2 Basket Lift Assembly (Modular) and Related Components (cont.)**

<b>Item</b>	<b>Part Number</b>	<b>Description</b>
4	807-0159	Connector, 12-Pin
5	807-2133	Capacitor, 120V Basket Lifts
*	807-2513	Capacitor, 208V Basket Lifts
6	807-2572	Microswitch
7	809-0082	Ring, Truarc
8	809-0111	Screw, 8-32
9	809-0186	Washer, Lock #6
10	809-0237	Nut, 4-40
11	809-0247	Nut, 8-32, Hex Keps
12	809-0354	Screw, 4-40 x 3/4"
*	809-0358	Screw, 4-40 x 1/4" (Use with 208V Basket Lifts)
13	809-0361	Screw, (Drill #8)
14	809-0412	Screw #10-1/2 Hex
15	809-0503	Screw, Hex 8-32 x 1/2"
16	810-1012	Basket Lift Rod
17	812-0442	Insulation, Switch Box
18	813-0035	Bushing, Bronze .620 ID
19	900-5529	Gusset
20	901-8499	Chassis, Left
21	902-8499	Chassis, Right
22	807-1683	Relay, 12VDC
*	200-2565	Enclosure, Basket Lift Assembly
*	200-3232	Mount, Conduit- Basket Lift Wire Harness Cover
*	200-3224	Cover, Basket Lift Wire Harness
* Not Illustrated		

**ULTIMATE ELECTRIC SERIES FRYERS  
CHAPTER 2: PARTS LIST**

**2.2 Basket Lift Assembly (Modular) and Related Components (cont.)**

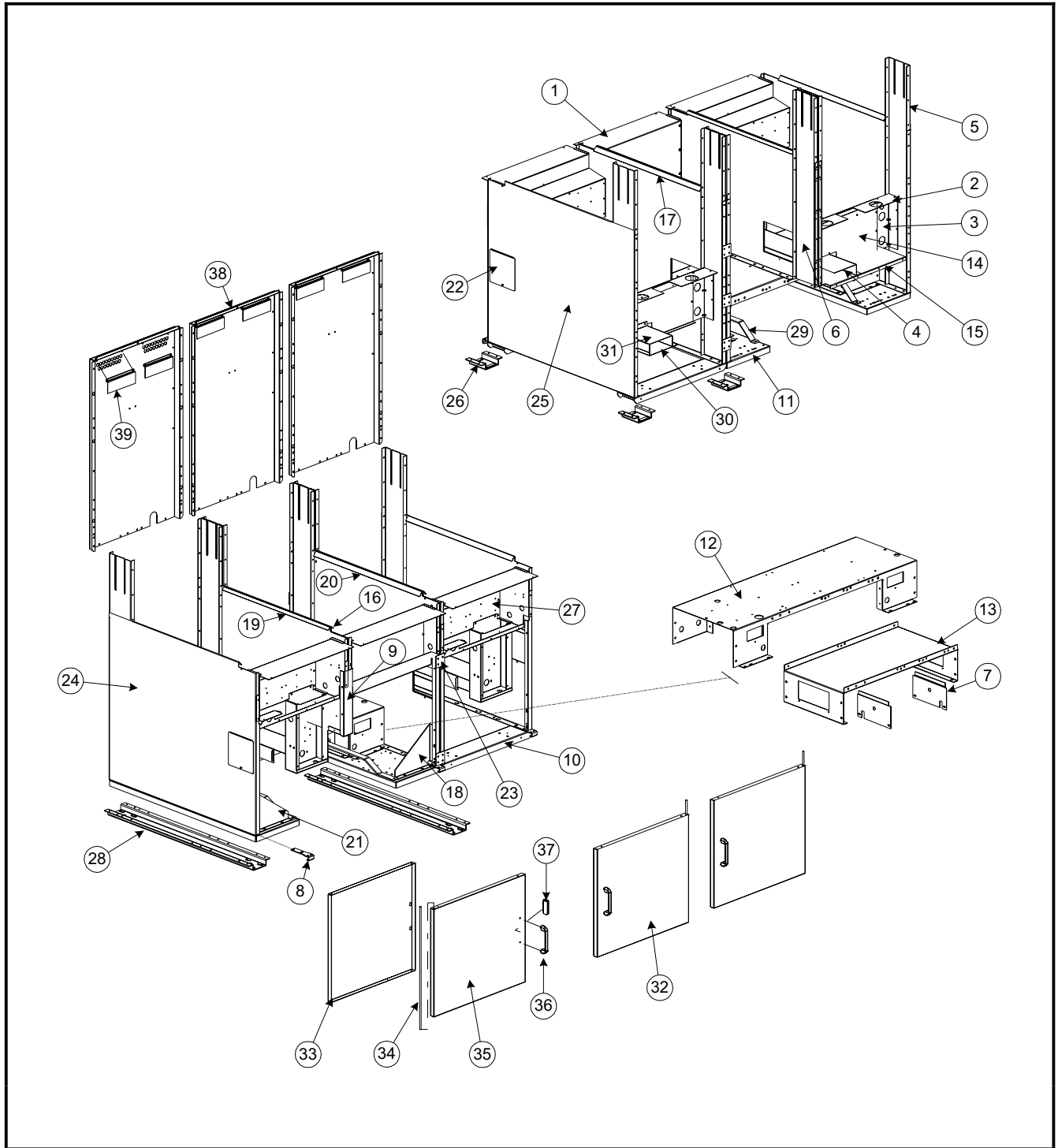


Item	Part Number	Description
1	106-1594SP	Roller Assembly, Bracket
2	809-0508	Bolt, 1/4-20 x 1-1/4" Hex Head S/S
3	809-0190	Washer, Flat- 1/4" S/S
4	810-0374	Spacer, Tubular Basket Lift Roller
5	810-0194	Roller, Basket Lift
6	809-0047	Nut, Cap- 1/4-20 S/S
7	809-0132	Screw, 1/4-20 x 3/4" Round Slotted S/S
8	823-3992	Basket Lift Arm- Left
9	823-3993	Basket Lift Arm- Right

ULTIMATE ELECTRIC SERIES FRYERS  
CHAPTER 2: PARTS LIST

2.3 Cabinetry and Related Components

2.3.1 EH1721 & 18UE



**ULTIMATE ELECTRIC SERIES FRYERS  
CHAPTER 2: PARTS LIST**

**2.3.1 EH1721 & 18UE (cont.)**

Item	Part Number	Description
1	106-1724SP	Cover Assembly, Dump Station Front
2	200-1254	Guard, Rear Wire- Top
3	200-1255	Guard, Rear Right Center Wire, Side
4	200-1263	Channel, Bus Electric
5	200-1284	Channel, Vessel- Outer Back Panel
6	200-1285	Channel, Vessel- Outer Back Panel
7	200-1331	Shield, Burner- Heat
8	200-1675	Bracket, Lower Hinge
9	200-2308	Post, Door
10	200-2493	Channel, Front & Rear- Single and 2-Battery With Dump Station
*	200-2534	Channel, Front & Rear- 3-Battery With Dump Station
11	200-2526	Channel, Base
12	200-3215	Frame, Base- 1721 Systems
*	200-3491	Frame, Base- BIH1721
13	200-3264	Base, Cabinet Lower Frame- 1721 Systems
*	200-3494	Base, Cabinet Lower Frame- BIH1721
14	200-3242	Guard, Center Rear Wire
15	200-2842	Cover, Structural Back- Lower
16	201-3216	Panel, Inner-Left Side
17	201-2533	Side, Cabinet- Left (With Hole)
18	201-2552	Gusset, Side Panel- Left
19	202-3216	Panel, Inner- Right Side
20	202-2533	Side, Cabinet- Right (With Hole)
21	202-2552	Gusset, Side Panel- Right
22	210-2756	Duct, Door Access
23	210-2848	Bracket, Cabinet Batter
24	211-2532	Side, Cabinet- Left Side
25	212-2532	Side, Cabinet- Right Side
26	823-3248	Support, Leg
27	823-3458	Wireway, Control Panel
* Not Illustrated		

**ULTIMATE ELECTRIC SERIES FRYERS  
CHAPTER 2: PARTS LIST**

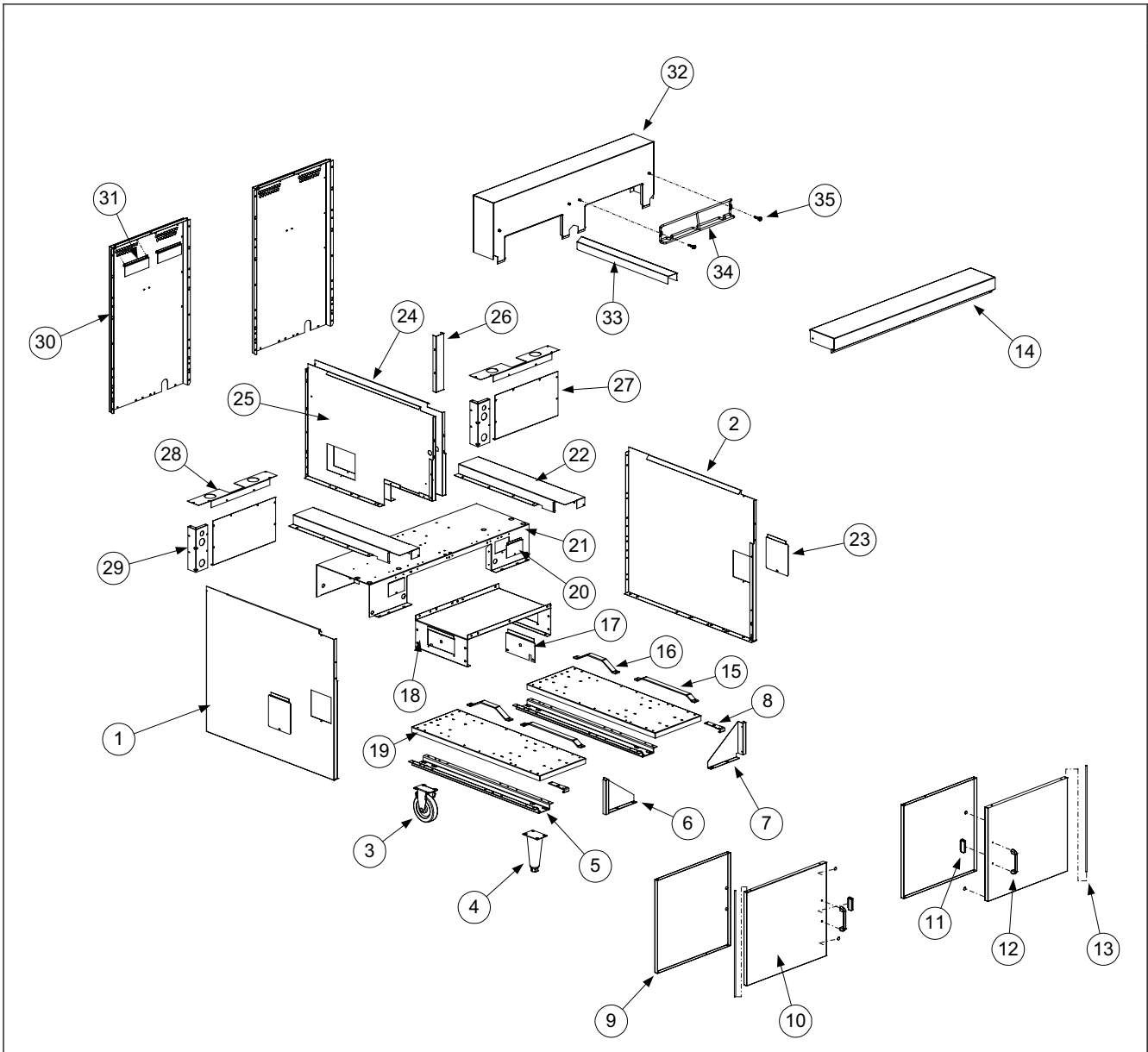
**2.3.1 EH1721 & 18UE (cont.)**

<b>Item</b>	<b>Part Number</b>	<b>Description</b>
28	823-3468	Channel, Leg Support
29	823-3559	Slide, Filter Pan Support
30	200-3240	Bottom, Bus Channel
31	823-3688	Cover, Bus Channel (With Bracket)
32	106-0855SP	Door Assembly (Door Pin Not Included) <b>See Section 2.3.3 For Additional Door Components</b>
33	200-1185	Panel, Door- Inner
34	200-1301	Door Pin
35	210-1271	Panel, Door- Outer
36	810-0180	Handle, Door
*	809-0918	Screw, 10-24 x ½" Slotted Head (Use With 810-2105)
*	809-0191	Washer, ¼ Spring-Lock (Use With 810-2105)
37	810-0066	Magnet, Door
38	200-1252	Back, Upper Cabinet
39	200-1283	Cover, Vent- Cabinet Back
* Not Illustrated		



ULTIMATE ELECTRIC SERIES FRYERS  
CHAPTER 2: PARTS LIST

2.3.2 KFC18E Electric



**ULTIMATE ELECTRIC SERIES FRYERS  
CHAPTER 2: PARTS LIST**

**2.3.2 KFC18E Electric (cont.)**

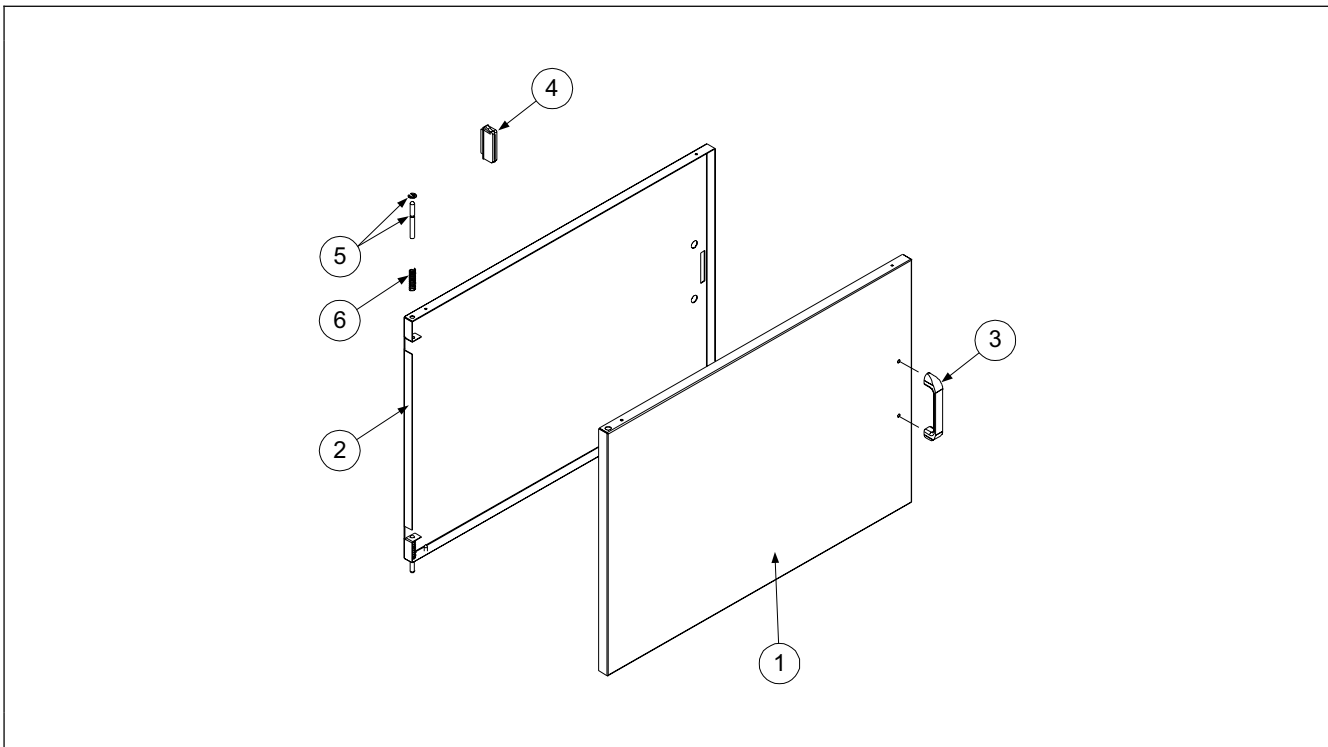
<b>Item</b>	<b>Part #</b>	<b>Description</b>
1	201-1299	Side Panel, Painted, LH
2	202-1299	Side Panel, Painted, RH
3	810-0378	Caster, Stationary- 5" Rigid
4	806-5043	Leg
0	823-3180	Support, Channel- Leg/Caster
6	201-1182	Gussets, L/H
7	202-1182	Gussets, R/H
8	200-1675	Lower Hinge Bracket (Door)
9	200-1185	Door Panel, Inner
10	210-1271SP	Door Panel, Outer
*	106-0855SP	Door Assembly (Door Pin Not Included) <b>See Section 2.3.3 For Additional Door Components</b>
11	810-1105	Magnetic Door Catch
12	810-0180	Handle, Door
*	809-0918	Screw, 10-24 x ½" Slotted Head (Use With 810-2105)
*	809-0191	Washer, ¼ Spring-Lock (Use With 810-2105)
13	200-1301	Door Pin
14	210-1262	Top Cap
15	210-1806	Slide, UFF Filter Pan- Front (Long)
16	210-2128	Slide, UFF Filter Pan- Rear (Short)
17	200-1331	Shield, Heat
18	200-1297	Base, Lower Frame
19	200-1198	Channel, Base
20	200-2134	Plate, Mounting (UFF)
21	200-1611	Base, Upper
22	200-1263	Channel, Bus
23	200-1471	Cover, Access Duct
24	202-1245	Panel, Inner- Right Side
25	201-1245	Panel, Inner- Left Side
26	200-2308	Post, Door
27	210-1278	Guard, Wire- Center
28	200-1254	Guard, Wire- Top
29	200-1255	Guard, Wire- Right Side Center
30	200-1252	Back, Cabinet
*	200-3362	Closure, Lower Structural Back (Single Fryers)
* Not Illustrated		

**ULTIMATE ELECTRIC SERIES FRYERS  
CHAPTER 2: PARTS LIST**

**2.3.2 KFC18E Electric (cont.)**

Item	Part #	Description
31	200-1283	Cover, Back Vent
*	809-0360	Screw, Hex Slotted Head – With Washer- #8 x 3/8"
32	823-3551	Housing, Tilt
33	210-1288	Joiner Strip
34	810-2092	Hanger, Basket
35	809-0171	Thumbscrew, 1/4 x 1-3/8" Nickel-Plated
* Not Illustrated		

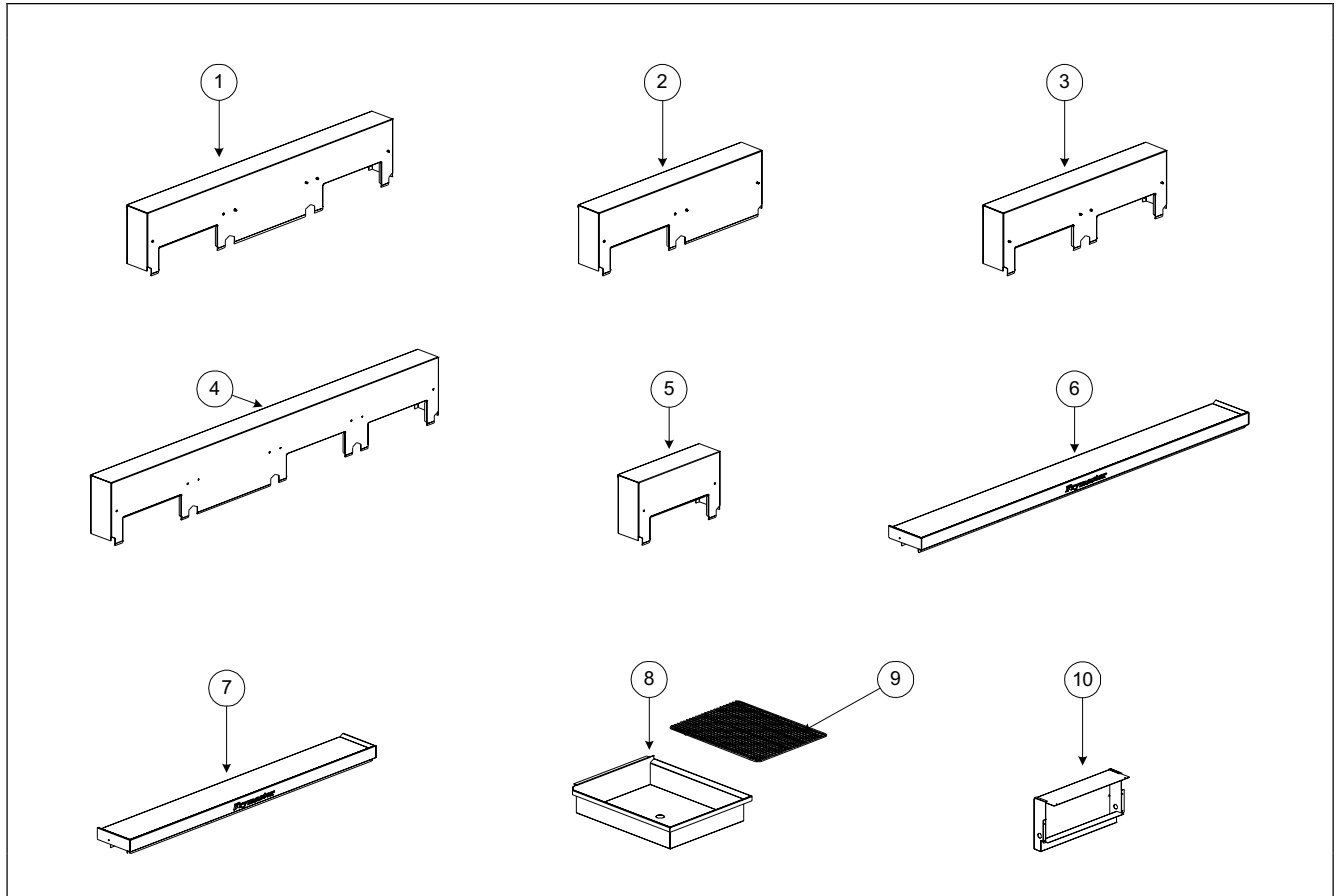
**2.3.3 Door Components – Spring-Loaded Door Pins**



Item	Part #	Description
1	824-1146	Panel, Door- Outer (Current Production UE Only)
2	200-4610	Liner, Door (Current Production UE Only)
3	810-0180	Handle, Door (See Section 2.3.1 and 2.3.2 for connecting hardware)
4	810-1105	Magnet, Door (Offset)
5	106-0554SP	Pin, Door Slotted (With Keeper)
6	810-0275	Spring, Door Hinge
* Not Illustrated		

**ULTIMATE ELECTRIC SERIES FRYERS  
CHAPTER 2: PARTS LIST**

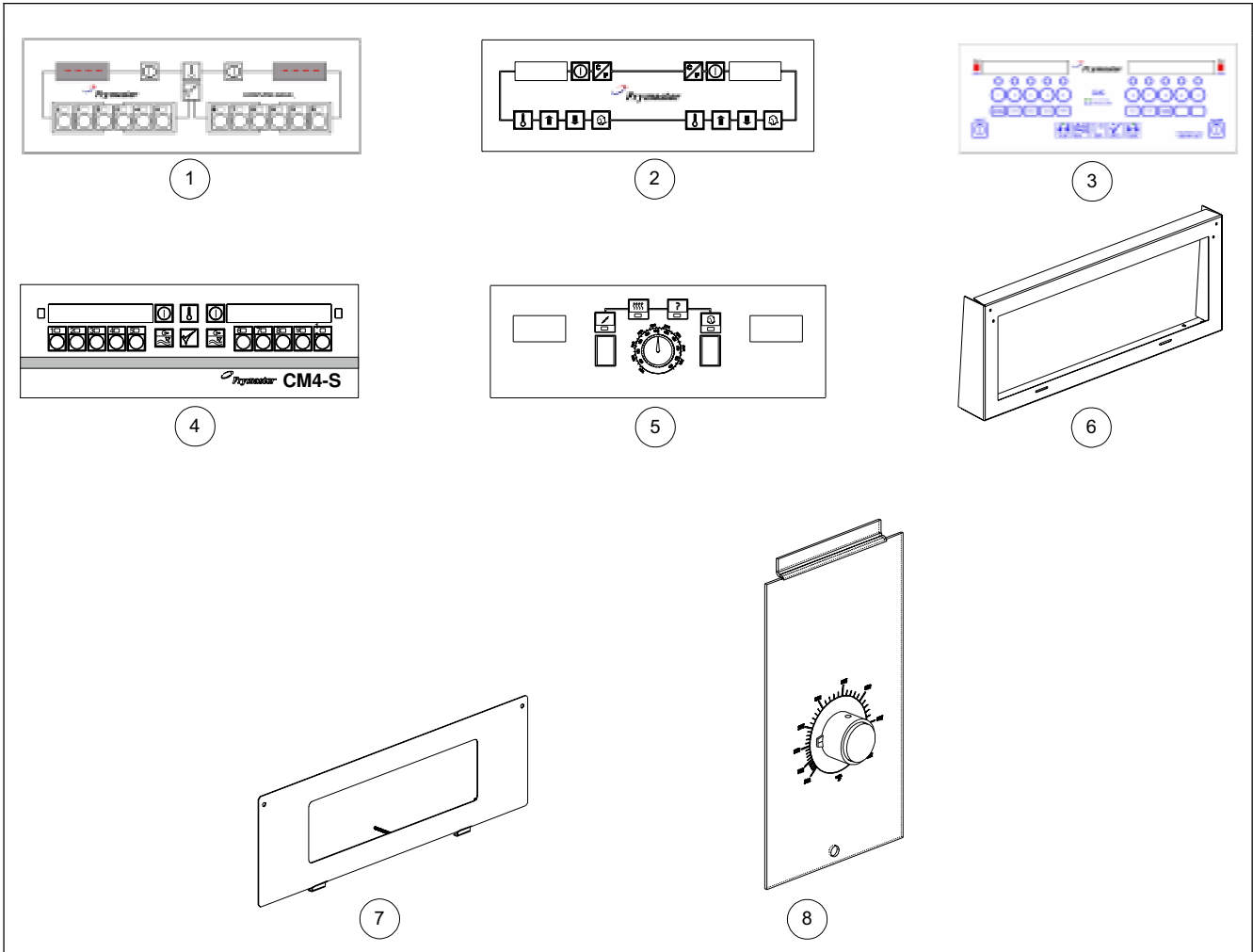
**2.3.4 Top Cap and Tilt Housing Components**



Item	Part Number	Description
1	106-1722SP	Tilt Housing (With Nutsert), 2-Battery EH1721 W/Dump Station
2	106-1723SP	Tilt Housing - EH1721 W/Dump Station
3	823-3551	Tilt Housing, 2-Battery EH1721
4	824-0946	Tilt Housing, 3-Battery EH1721 W/Dump Station
5	823-3855	Tilt Housing, BIH/EH1721- Single
6	824-0944	Top Cap, 4-Battery EH1721
7	824-0945	Top Cap, 3-Battery EH1721
8	823-3436	Dump Station, EH1721
*	823-2335	Strainer (Screen), Dump Station Drain
9	803-0310	Grid, Dump Station
10	106-1724SP	Cover Assy, Dump Station- Front
* Not Illustrated		

ULTIMATE ELECTRIC SERIES FRYERS  
CHAPTER 2: PARTS LIST

2.4 Computers, Controllers and Related Components



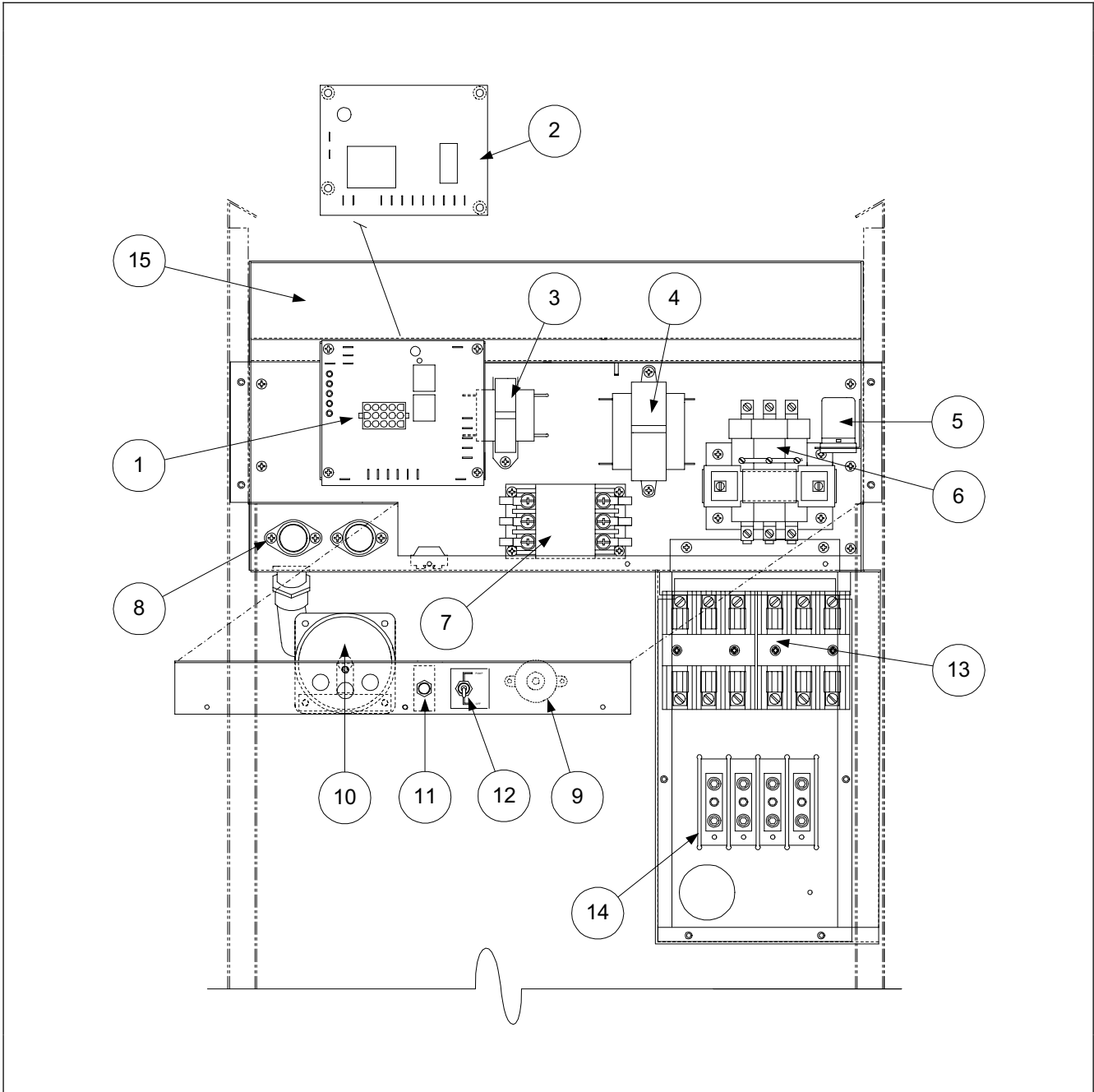
**ULTIMATE ELECTRIC SERIES FRYERS  
CHAPTER 2: PARTS LIST**

**2.4 Computers, Controllers and Related Components (cont.)**

<b>Item</b>	<b>Part Number</b>	<b>Description</b>
		<b>All Computers/Controllers Come With Bezels Except Item #5</b>
1	106-1827	Computer, CM-III Full-Vat
2	106-1503	Controller, Digital- Full-Vat
*	106-2510	Controller, Digital- Full-Vat- CE
3	106-0063	Computer, KFC-1 Electric (Non-CE)
*	106-0064	Computer, KFC-1 Electric (CE)
4	106-3028	Computer, CM4-S (Segmented Programming)
5	806-7422	Controller, Analog- Solid State (3 On, 12 Off)
6	210-1256	Control Panel- <u>All Ultimate Electrics</u>
7	823-3433	Bezel, Computer- <u>All Except KFC18E</u>
*	823-2882	Bezel, Computer- <u>KFC18E Only</u>
8		<b>Electronic Thermostat Controller</b>
	210-1985	Faceplate, Potentiometer Assembly- 18UE
	802-2052	Label, Faceplate- Electronic Thermostat Controller
	106-0801SP	Pot Assy, Electronic Thermostat Controller- 18UE
	816-0534	Knob, Pot Assy- Electronic Thermostat Controller- 18UE
* Not Illustrated		

ULTIMATE ELECTRIC SERIES FRYERS  
CHAPTER 2: PARTS LIST

2.5 Contactor/Wireway Box and Related Components



**ULTIMATE ELECTRIC SERIES FRYERS  
CHAPTER 2: PARTS LIST**

**2.5 Contactor/Wireway Box and Related Components (cont.)**

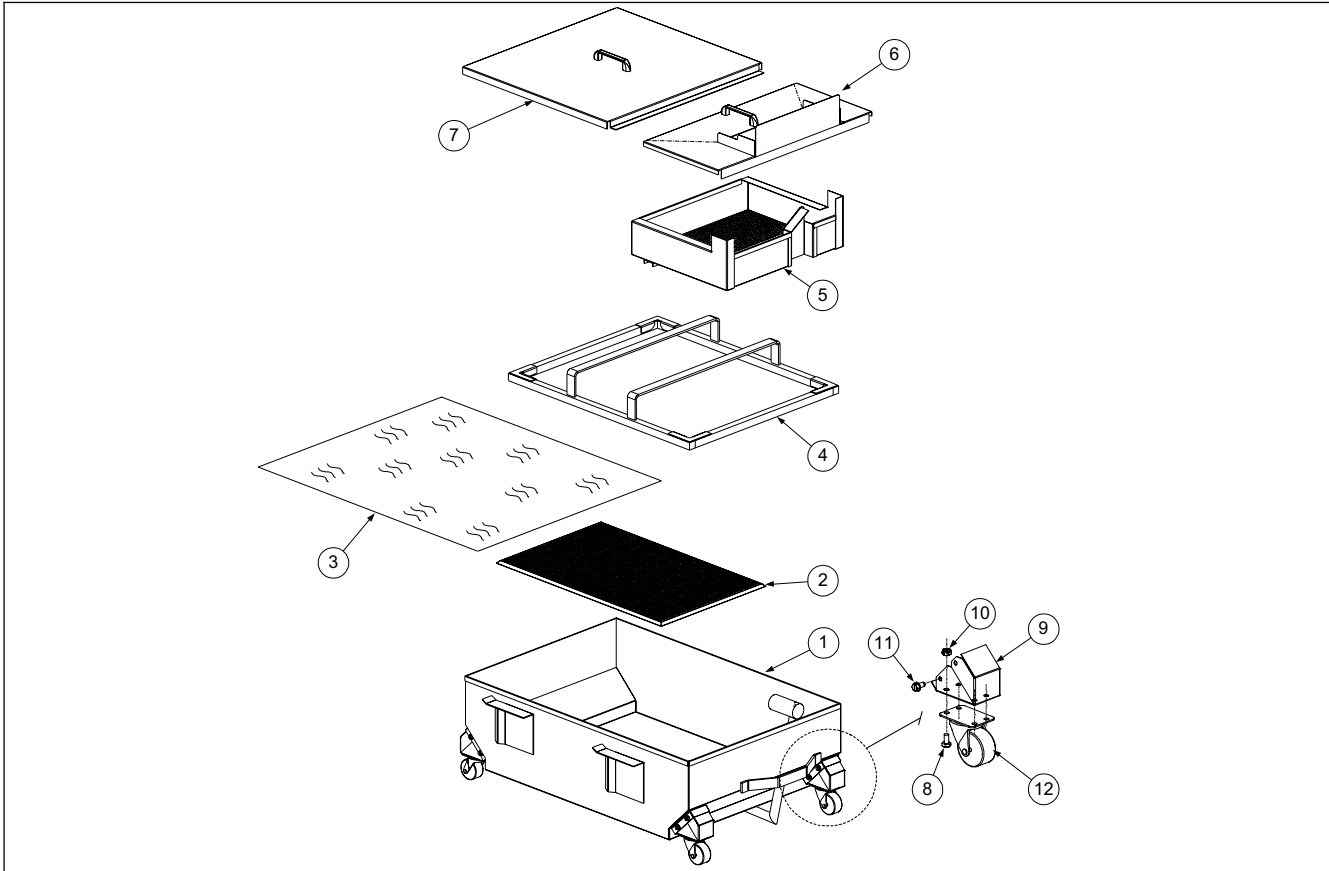
<b>Item</b>	<b>Part Number</b>	<b>Description</b>
1	806-6336	Interface Board- (All Except Electronic Thermostat Controller)
2	807-3722	Interface Board- (Electronic Thermostat Controllers Only)
3	807-0855	Transformer, 120V, 50/60 Hz –12V 20VA (480V Units)
*	807-0979	Transformer, 208-240V, 50/60Hz –12V 20VA
4	807-0800	Transformer, 120V 50/60 Hz –24V 50VA (480V Units)
*	807-0680	Transformer, 208-240V, 50/60Hz –24V 20VA
5	807-3611	Relay, 24VAC
6	807-1071	Contactor, Mercury- 240VAC 30-Amp (17 kW Units)
*	807-0884	Contactor, Mercury- 240VAC 50-Amp (21 kW Units)
7	810-1202	Contactor, Latching- 40-Amp, 3-Pole
8	807-0922	Fuse Holder, Buss Fuse
*	807-2278	Fuse, 20-Amp
9	806-3660	Sound Device- <u>All Except KFC18E</u>
10	806-3660	Speaker, Sound- <u>KFC18E Only</u>
11	807-3538	Breaker, Circuit- 5 Amp (230V Filter Circuit)
*	807-3577	Breaker, Circuit- 7 Amp (120V Filter Circuit)
12	807-3539	Switch, Toggle- Filter Bypass- ON-OFF
13	807-0501	Fuse Block, Buss #2968, 3-Pole
14	807-2465	Power Block– 3-Phase- <b>WYE Only</b>
*	807-3610	Power Block– 3-Phase- <b>DELTA Only</b>
15	823-3458	Wireway Control Panel (Box)- <u>All Ultimate Electrics</u>
*	816-0570	Cover, Wireway Control Box (Clear Lexan)
*	807-0331	Transformer, 480V-250VA (With Basket Lift)
*	807-0064	Transformer, 480V-150VA (Without Basket Lift)
*	807-0800	Transformer, 120V 50/60 Hz -24V 50VA (UFF 100 Pump Motor Relay)
*	807-0680	Transformer, 208V, 50/60Hz –24V 20VA (UFF 100 Pump Motor Relay)
*	824-0955	Cover, 480V Transformer- Left Side
*	200-1291	Cover, Terminal Block- <u>All Except Electronic Thermostat Controller</u>
*	18-0350-1	Cover, Terminal Block- <u>Electronic Thermostat Controller Only</u>
* Not Illustrated		



**ULTIMATE ELECTRIC SERIES FRYERS**  
**CHAPTER 2: PARTS LIST**

**2.6 Filter Pan and Related Components- Built-in Filtration**

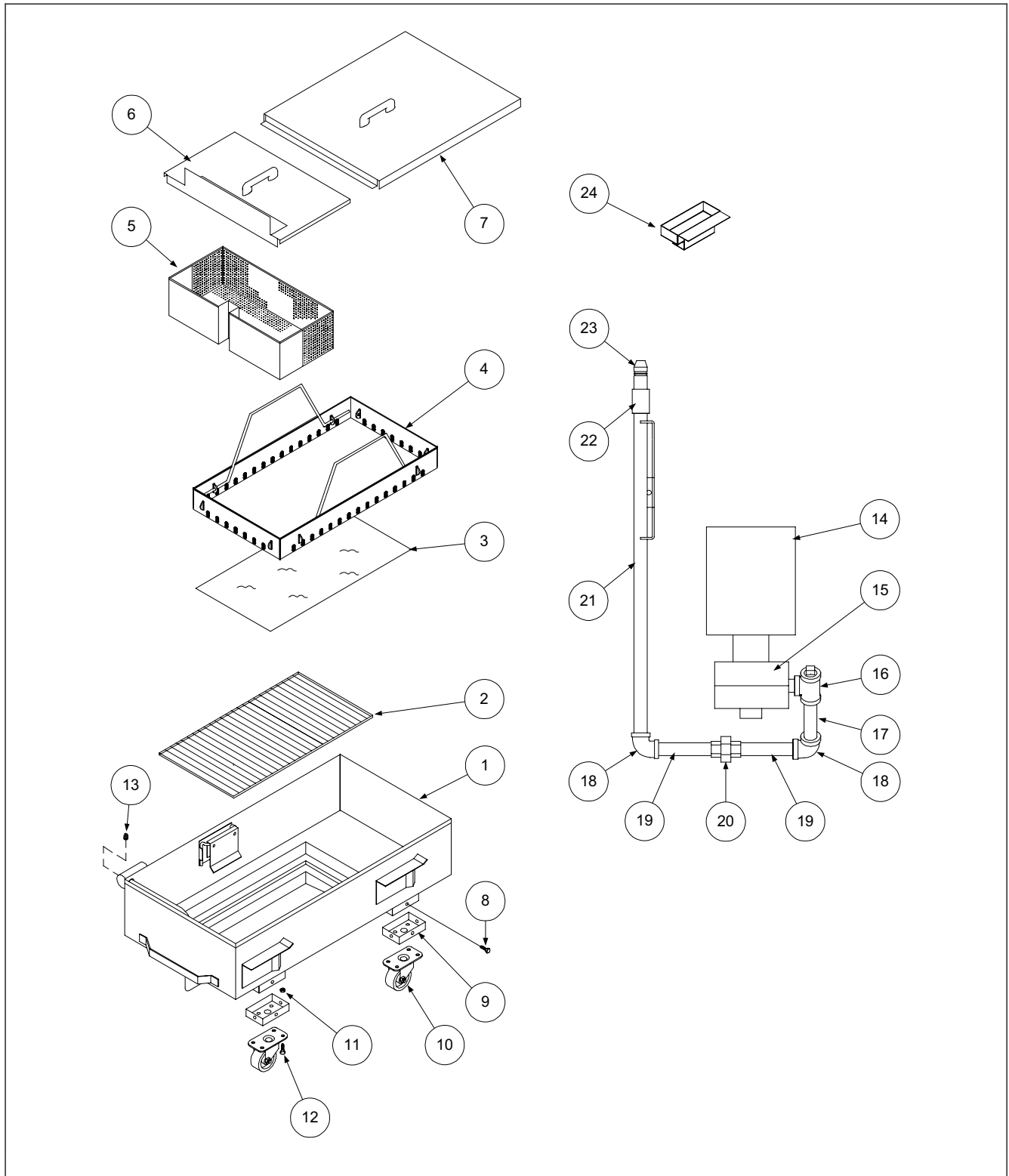
**2.6.1 Under Fryer Filter (UFF) – UFF 80 (100 Lb Capacity)**



Item	Part Number	Description
1	106-1584SP	Filter Pan, UFF 80 (100 Pound Capacity)
2	823-3365	Support Grid (Bottom Pan Screen)
3	803-0303	Filter Paper, 26 x 34" (100 Sheets)
4	823-3439	Hold-down Ring, Weighted
5	823-3443	Crumb Basket
6	106-1587SP	Filter Pan Cover, Front
7	106-1588SP	Filter Pan Cover, Back
8	809-0822	Bolt, ¼-20 x ½" Steel
9	210-2291	Insert, Caster
10	809-0820	Nut, Oval Locking- ¼-20
11	809-0805	Screw, ¼-20 x ½"
12	810-0006	Caster, 2"

ULTIMATE ELECTRIC SERIES FRYERS  
CHAPTER 2: PARTS LIST

2.6.2 Under Fryer Filter (UFF) – KFC18E Only



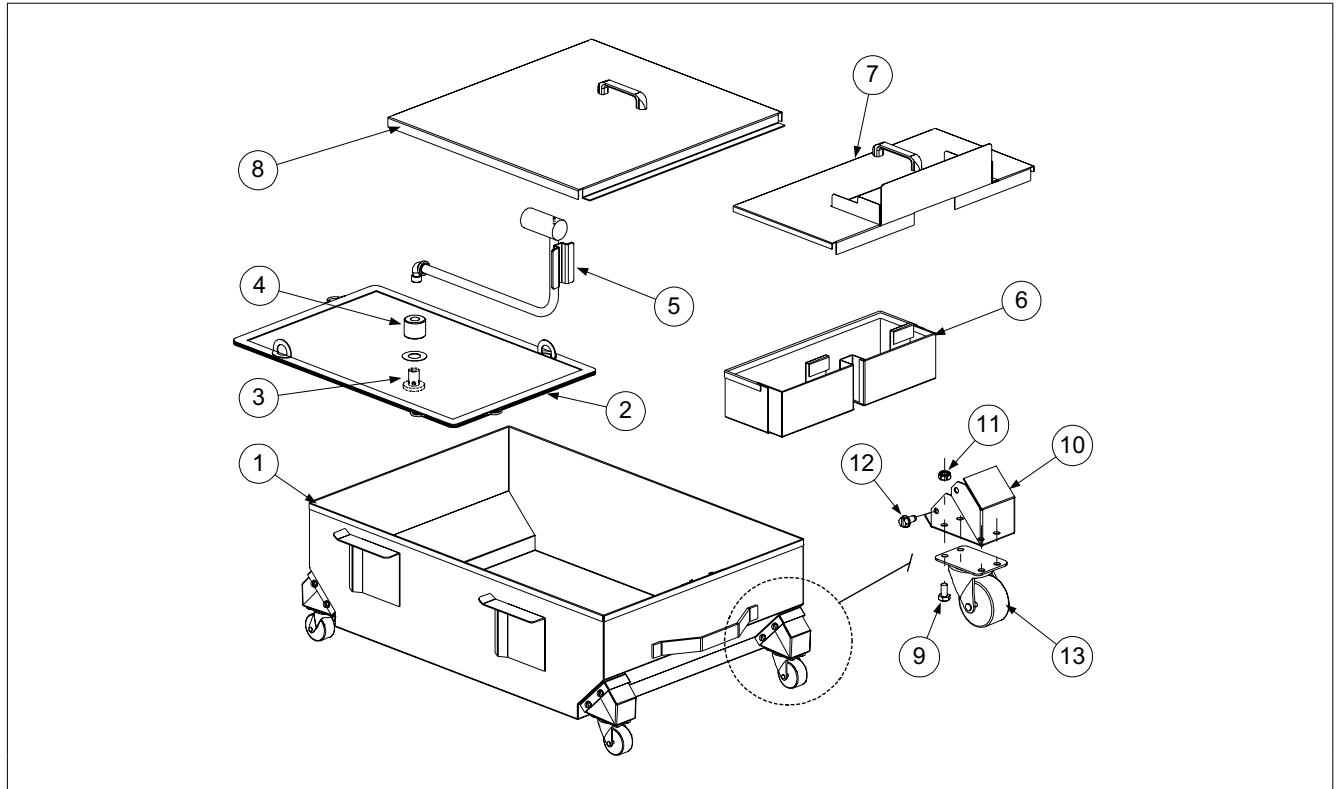
**ULTIMATE ELECTRIC SERIES FRYERS  
CHAPTER 2: PARTS LIST**

**2.6.2 Under Fryer Filter (UFF) – KFC18E Only (cont.)**

Item	Part Number	Description
1	823-3240	Pan, Filter- KFC18E
2	810-2119	Grid, Filter- KFC18E
3	803-0170	Paper, Filter- 16-½ x 25-¾" (100 Sheets)
4	823-3201	Ring, Hold-Down (No Handles)- KFC18E
*	823-3202	Handle, Hold-Down Ring- KFC18E
5	823-3204	Crumb Basket- KFC18E
6	106-0903SP	Lid, Filter Pan- Front
7	106-0905SP	Lid, Filter Pan- Back
8	809-0866	Screw, SS- ¼-10 x ½" Phillips Head
9	210-1293	Insert, Mounting Plate- Caster
10	810-0006	Caster, 2"
11	809-0823	Nut, Nylock- ¼-20
12	809-0822	Bolt, ¼-20 x ½" Hex Head
13	813-0679	Plug, SS- 1/8 Square Head
14	810-2100	Motor, Filter Pump- 120/230V 1/3 HP
15	810-2098	Pump, Filter- 8GPM
16		<b>Fitting, Oil Suction Start</b>
	813-0022	Nipple, ½" NPT x Close BM
	813-0003	Tee, ½" NPT BM
	813-0156	Plug, ½" NPT BM
17	813-0674	Nipple, ½ NPT x 7-¼"
18	813-0062	Elbow, ½" x 90°
19	813-0247	Nipple, ½ NPT x 3-½"
20	813-0173	Union, ½" NPT BM
21	823-3282	Tube, Suction Assembly
22	813-0608	Coupling, Full
23	810-0697	Disconnect, Male
*	826-1392	O-Ring, Disconnect (Qty: 5)
24	106-0820SP	Drip Cup Assembly
* Not Illustrated		

**ULTIMATE ELECTRIC SERIES FRYERS**  
**CHAPTER 2: PARTS LIST**

**2.6.3 Under Fryer Filter (UFF) – Filter-Leaf /Suction Tube Assembly**

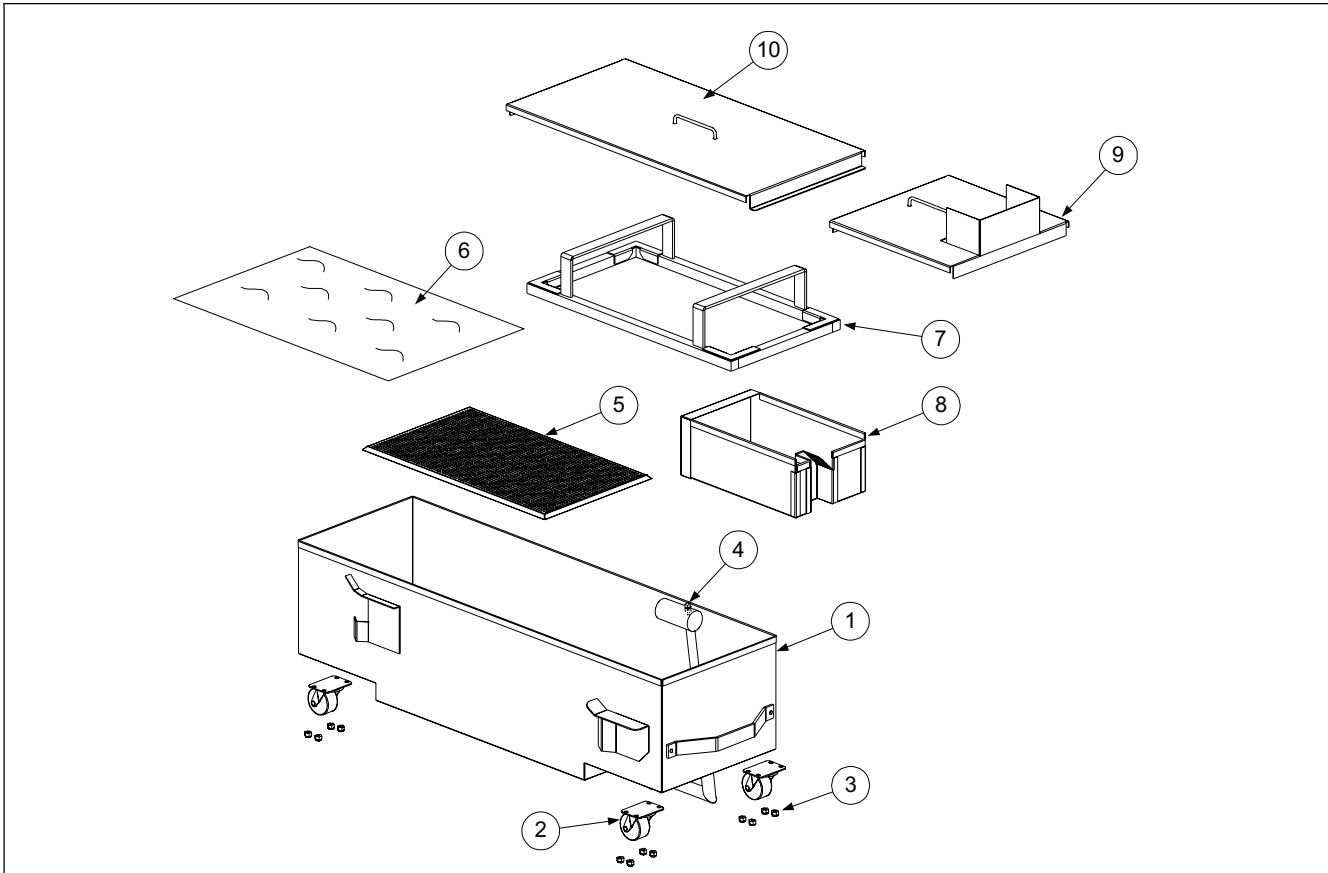


Item	Part Number	Description
1	823-4184	Filter Pan, UFF 80- <b>Filter-Leaf Equipped</b>
2	810-2350	Filter Leaf
3	810-2583	Fitting, Bottom- Filter Leaf
4	810-2582	Fitting, Upper- Filter Leaf
5	823-4112	Suction Tube Assembly- Filter Leaf
*	813-0679	Plug, 1/8 Square S/S (Suction Port)
6	823-3443	Crumb Basket
7	106-2953SP	Filter Pan Cover, Front
8	106-2952SP	Filter Pan Cover, Back
9	809-0822	Bolt, 1/4-20 x 1/2" Steel
10	210-2291	Insert, Caster
11	809-0820	Nut, Oval Locking- 1/4-20
12	809-0805	Screw, 1/4-20 x 1/2"
13	810-0006	Caster, 2"

\* Not Illustrated

**ULTIMATE ELECTRIC SERIES FRYERS  
CHAPTER 2: PARTS LIST**

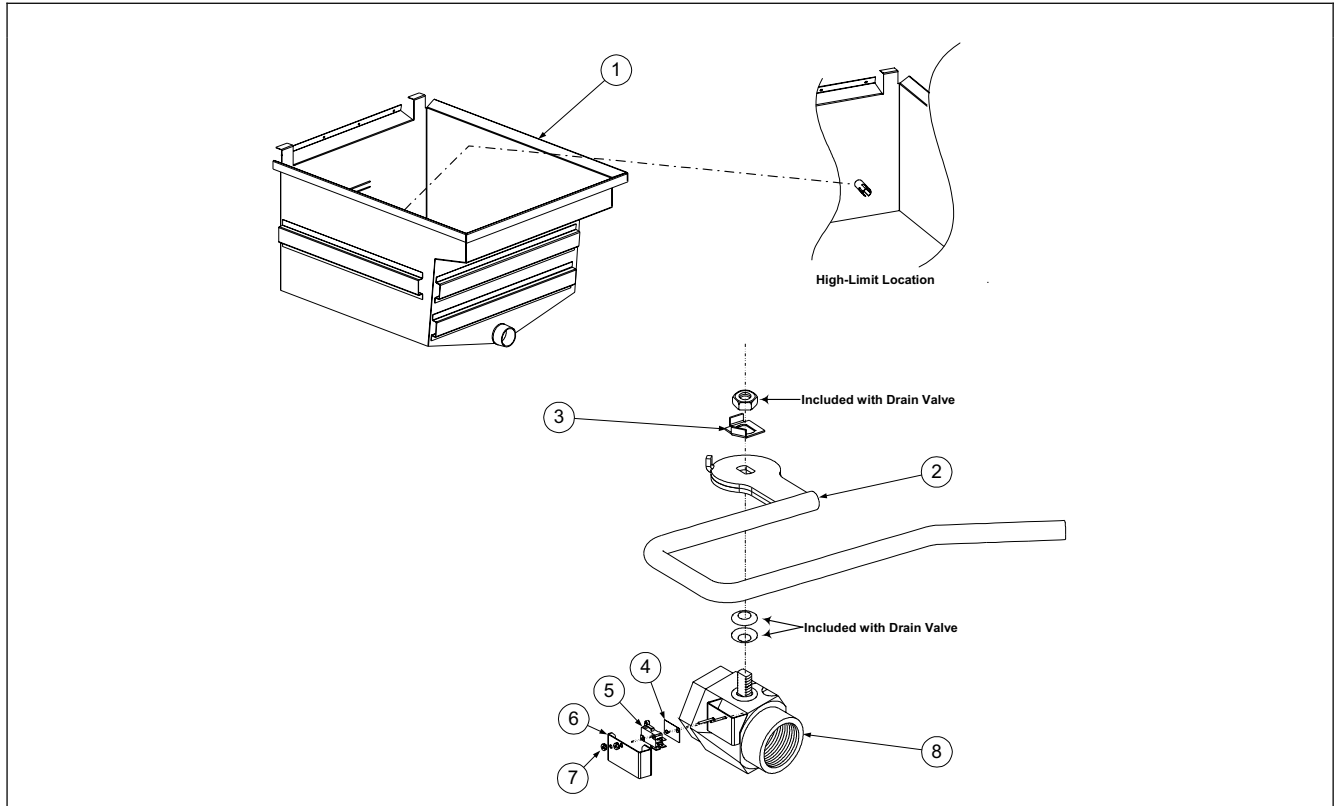
**2.6.4 Single Under Fryer Filter (SUFF) – BIH1721 and 18UE**



Item	Part Number	Description
1	106-2225SP	Filter Pan, SUFF 60 BIH1721 and 18UE
2	810-2141	Caster, 2"-Swivel
3	809-0823	Nut, Nylock ¼-20
4	813-0679	Plug, 1/8" SS Square Head
*	813-0684	Plug, Hex Socket, 3/8" NPT
5	823-3769	Support Grid (Bottom Pan Screen)- SUFF 60 BIH1721
6	803-0289	Paper, Filter- 22 x 34"
7	823-3768	Hold-Down Ring, Weighted- SUFF 60 BIH1721
8	823-3736	Crumb Basket
9	823-3766	Filter Pan Cover, Front
10	823-3767	Filter Pan Cover, Back
* Not Illustrated		

ULTIMATE ELECTRIC SERIES FRYERS  
CHAPTER 2: PARTS LIST

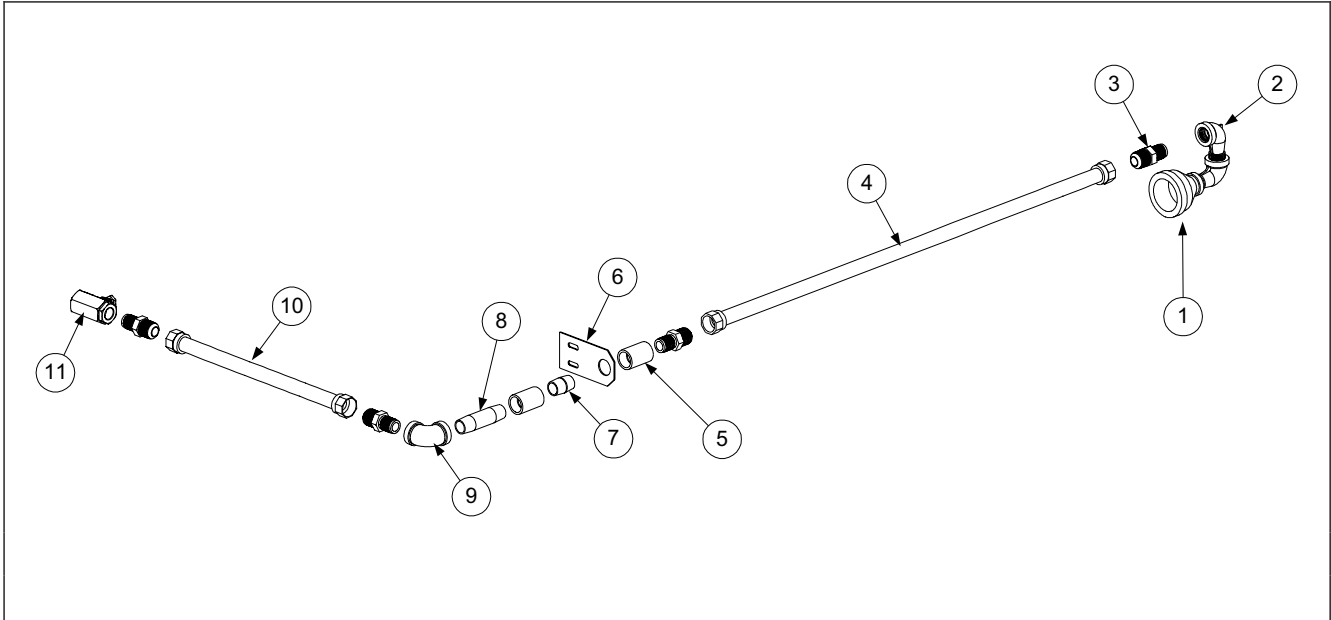
2.7 Frypot and Drain Valve Components



Item	Part Number	Description
1	823-3235	Frypot- EH1721, 18UE & 18E
*	823-4290	Frypot- EH1721 With 3 Oil-Level Lines
2	823-4233	Handle, Drain Valve- <b>Filter Units Only</b>
*	823-4187	Handle, Drain Valve- <b>Single Fryers Only</b>
*	816-0547	Cap, Drain Valve Handle- Red
3	200-1257	Retainer, Drain Valve Nut
4	816-0220	Insulation, Microswitch
5	807-2104	Microswitch (Domestic and CE)
6	210-1269	Guard, Drain Valve Microswitch
7	809-0237	Nut, 4-40 Keps Hex- With External Teeth
8	823-3236	Drain Valve- 1-½" Full Port W/ Microswitch Bracket
* Not Illustrated		

**ULTIMATE ELECTRIC SERIES FRYERS  
CHAPTER 2: PARTS LIST**

**2.8 Oil Drain Flush Components**

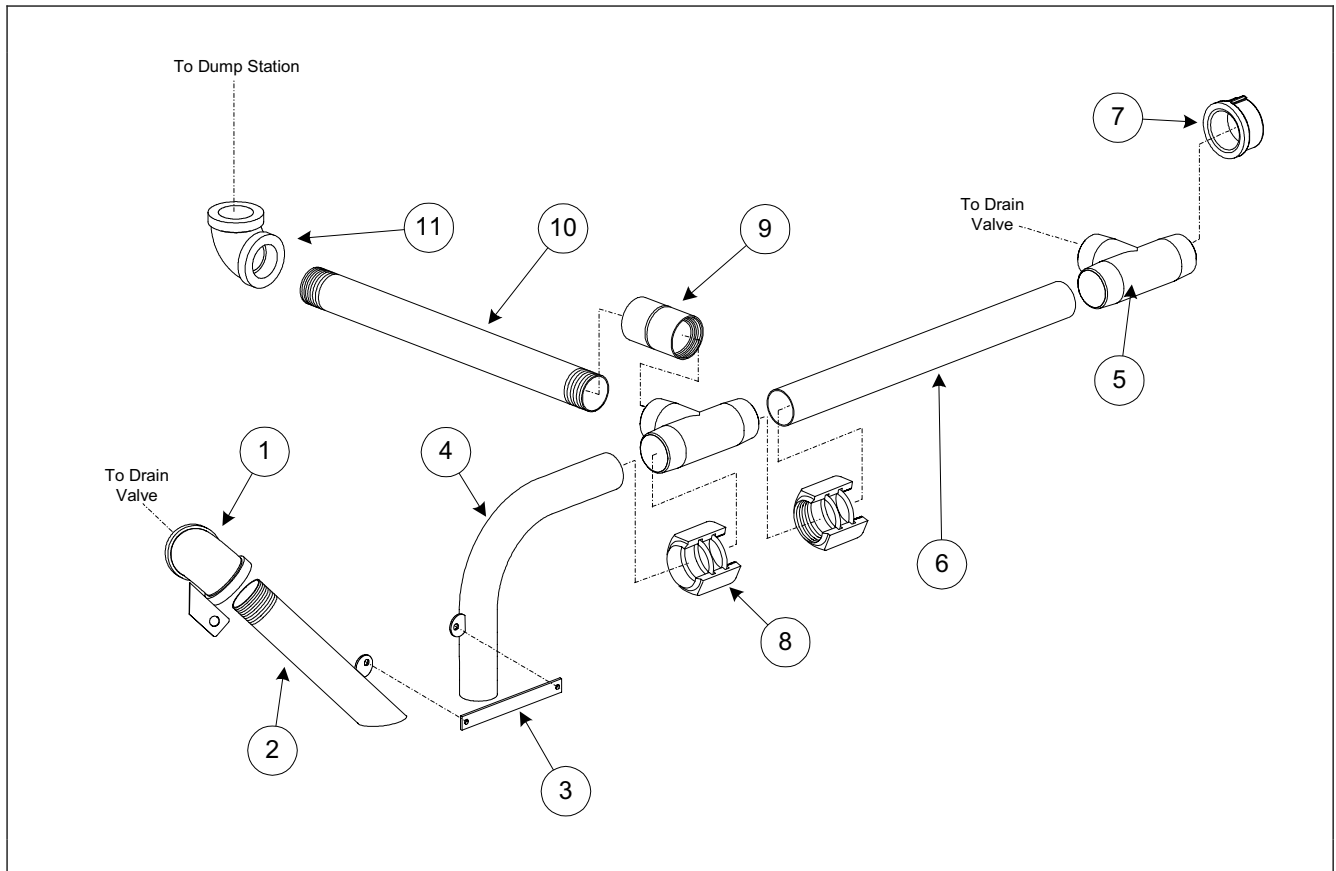


Item	Part Number	Description
1	813-0686	Bell Reducer, 1-1/2 x 1/2"
2	813-0165	Elbow, Street- 1/2 x 1/2" 90°
3	810-1668	Adapter, Male- 5/8 O.D. x 1/2"
4	810-1069	Flexline, 5/8 x 29-1/2"
5	813-0051	Coupling, Full- 1/2" NPT BM
6	900-1958	Bracket, Flush Line Support
7	813-0022	Nipple, 1/2" x Close NPT BM
8	813-0460	Nipple, 1/2 x 3" NPT BM
9	813-0062	Elbow, 1/2" 90° NPT BM
10	810-1057	Flexline, 5/8 x 13"
11	810-0278	Valve, Ball- 1/2"
*	823-3481	Handle, Oil Flush Valve
*	816-0549	Cap, Oil Flush Valve Handle- Blue
*	807-1419	Heater Strip- 240V/45W 36" L

\* Not Illustrated

**ULTIMATE ELECTRIC SERIES FRYERS**  
**CHAPTER 2: PARTS LIST**

**2.9 Oil Drain Manifold Components**



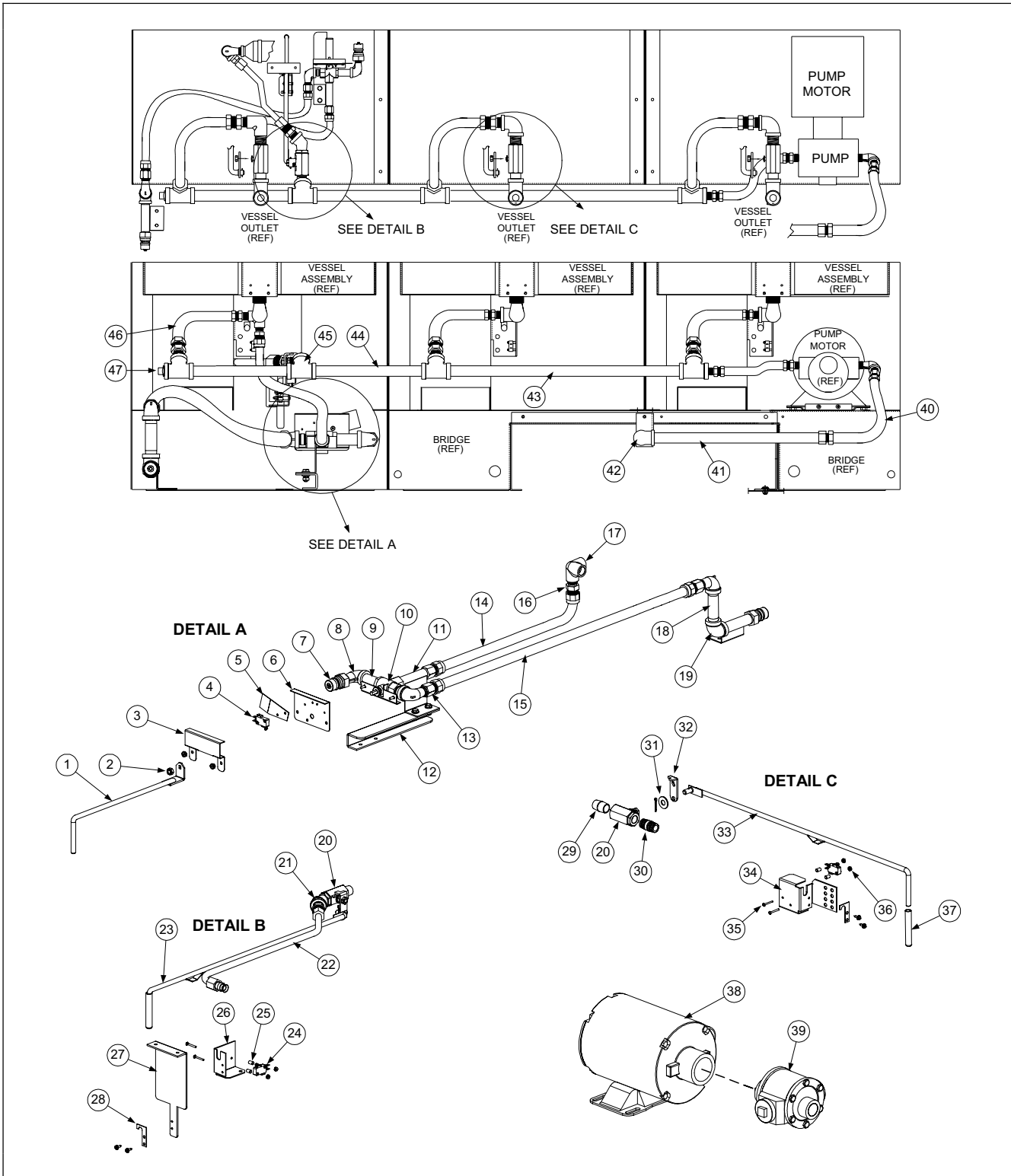
Item	Part Number	Description
1	823-3221	Elbow, with Bracket (Drain Valve Handle)
2	823-3558	Drain Pipe, Left Side
3	210-2311	Clamp, Center- Drain Pipe
4	823-3441	Drain Pipe, Right Side
5	813-0722	Tee, 1-1/2" NPT Male x 5-1/2" Long
6	200-1840	Drain Manifold Tube
7	813-0659	Pipe Cap, 1-1/2" NPT BM
8	809-0884	Nut, Slip Joint- 1-1/2"
*	816-0544	O-ring (Slip-Joint Nut)
9	813-0818	Coupling, Full 1-1/2"-SS
10	813-0723	Nipple, 1-1/2" x 8" NPT BM
11	813-0667	Elbow, 1-1/2" x 90° SS

\* Not Illustrated



**ULTIMATE ELECTRIC SERIES FRYERS**  
**CHAPTER 2: PARTS LIST**

**2.10 Oil Return Manifold, Motor and Pump Components**



**ULTIMATE ELECTRIC SERIES FRYERS  
CHAPTER 2: PARTS LIST**

**2.10 Oil Return Manifold, Motor and Pump Components (cont.)**

Item	Part Number	Description
		<b>NOTE: Oil Return Components Will Vary From System To System- The Most Common Components Are Included Below</b>
		<b>Rinse Hose/Disposal Plumbing Components</b>
1	823-4234	Handle, 3-Way Valve- Wand/Dispose
2	809-0056	Nut, 5/16-18 Hex
*	809-0681	Washer, Nylon- .340 ID, .740 OD
*	809-0194	Washer, Flat- 5/16" SAE
3	900-2110	Cover, Microswitch
*	809-0256	Nut, Microswitch Cover
4	807-2104	Microswitch, Roller
5	812-0442	Insulation, Microswitch Switchbox
6	900-2112	Support, Microswitch Mount
7	810-0487	Coupling Disconnect- Male
8	813-0165	Elbow, Street- ½" 90° NPT BM
9	813-0265	Nipple, ½ x 2-½" NPT BM
10	810-1003	Valve, Ball- Three-Way 180°
11	823-4196	Nipple Weld Assembly- Three-Way Valve
12	200-4996	Bracket, Mounting Base
*	809-0131	Screw, ¼-20 x ¾" Hex Head
*	809-0070	Nut, ¼-20 Hex S/S
13	810-1669	Adapter, Female- 5/8 OD x ½"
14	810-1369	Flexline, 5/8 x 17-½"
15	810-1069	Flexline, 5/8 x 29-½"
16	810-1668	Adapter, Male- 5/8 OD x ½"
17	813-0331	Elbow, Side Outlet- ½" NPT
18	813-0247	Nipple, ½ x 3-½" NPT BM
19	813-0062	Elbow, ½" 90° NPT BM
		<b>Drain Flush Components- 3-Battery &amp; Larger Units</b>
20	810-0278	Valve, Ball- ½"
21	813-0342	Elbow, ½" 45° NPT BM
22	810-2626	Tubing, Flare- Oil Return- 3-Battery Church's
* Not Illustrated		

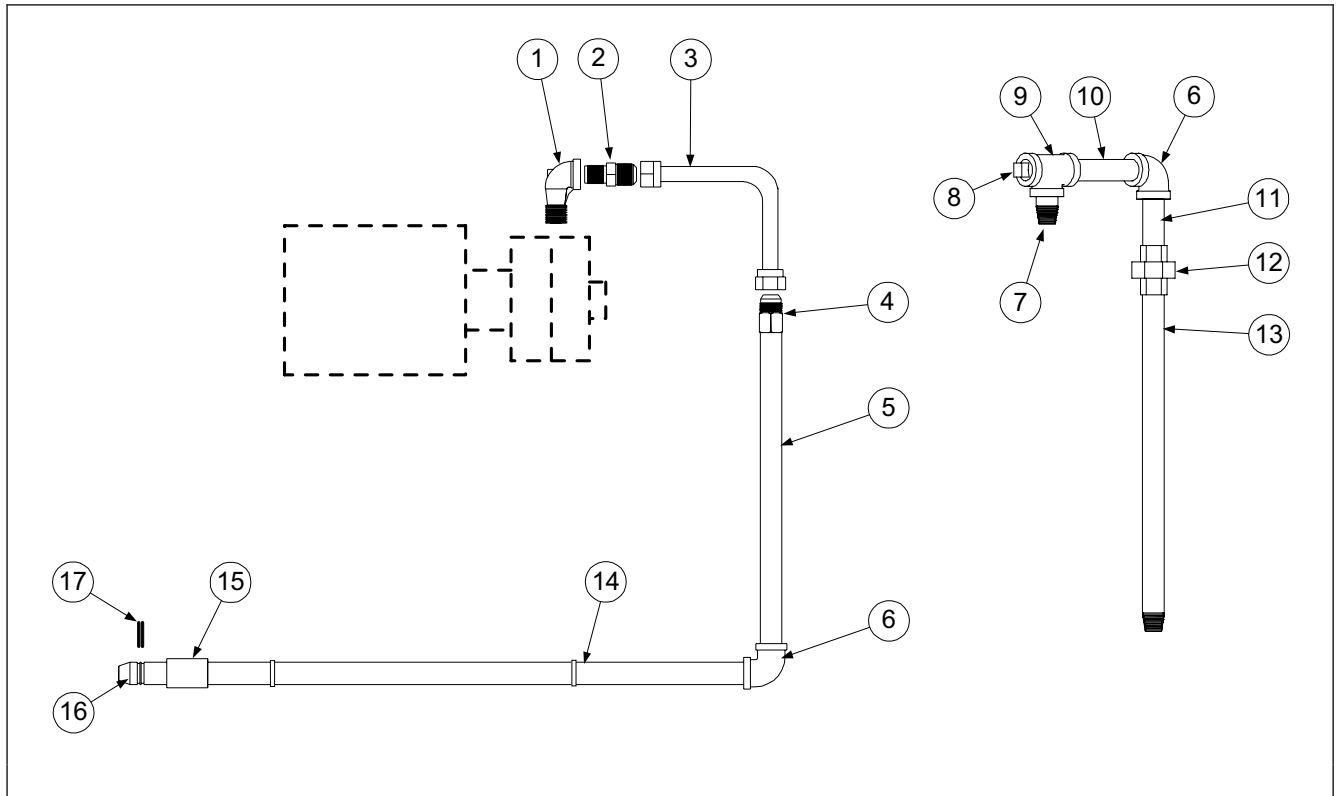
**ULTIMATE ELECTRIC SERIES FRYERS  
CHAPTER 2: PARTS LIST**

**2.10 Oil Return Manifold, Motor and Pump Components (cont.)**

<b>Item</b>	<b>Part Number</b>	<b>Description</b>
23	823-4220	Handle, Drain Flush Valve
*	816-0549	Handle, Vinyl- Blue (Drain Flush/Rinse/Dispose Valve)
24	807-2104	Microswitch (Same as Item #4)
25	810-2144	Spacer, Microswitch
26	200-5056	Bracket, Microswitch- Drain Flush
27	210-5057	Bracket, Main Mount- Microswitch Drain Flush
28	200-1341	Bracket, Microswitch Rod
		<b>Oil Return Valve/Handle Components</b>
29	813-0022	Nipple, ½" x Close NPT BM
30	813-0087	Nipple, ½ x 1-½" NPT BM
31	809-0885	Washer, 3/8 x 1 x .083"
*	809-0843	Pin, Cotter (For Retaining Washer/Rod to Arm)
32	901-0883	Arm, Oil Return Valve
33	823-3238	Handle Assembly, Oil Return
34	202-1233	Bracket, Oil Return Microswitch
35	809-0846	Screw, 4-40 x 1" Slotted
36	809-0237	Nut, Keps- 4-40 (With External Teeth)
37	816-0548	Handle, Vinyl- Yellow (Oil Return)
38	810-2100	Motor, Filter Pump- 120V/230V 1/3 HP
39	810-2098	Pump, Filter- 8GPM
40	810-1159	Flexline, 5/8 x 5"
41	813-0429	Nipple, ½ x 13" NPT BM
42	▶▶▶	<b>See Oil Return Line Assemblies, Section 2.11</b>
43	813-0381	Nipple, ½ x 18-½" NPT BM
44	813-0673	Nipple, ½ x 8-½" NPT BM
45	813-0003	Tee, ½" NPT BM
46	810-1680	Flexline, 5/8 x 6-½"
47	813-0156	Plug, ½" NPT BM Hex Head
* Not Illustrated		

ULTIMATE ELECTRIC SERIES FRYERS  
CHAPTER 2: PARTS LIST

2.11 Oil Return Line Assemblies



Item	Part Number	Description
		<b><i>Oil Return Line Assemblies Will Vary From System To System- Use The Above Illustration To Identify Components</i></b>
1	813-0165	Elbow, Street- ½" 90°
2	810-1668	Adapter, Male- 5/8 x ½"
3	810-1159	Flexline, 5/8 x 5"
4	810-1669	Adapter, Female- 5/8 x ½"
5	813-0429	Nipple, ½ x 13" NPT BM
6	813-0062	Elbow, ½" 90° NPT BM
7	813-0609	Nipple- ½ NPT x 1"
8	813-0156	Plug, ½" NPT Hex Head
9	813-0003	Tee, ½" NPT BM
* Not Illustrated		

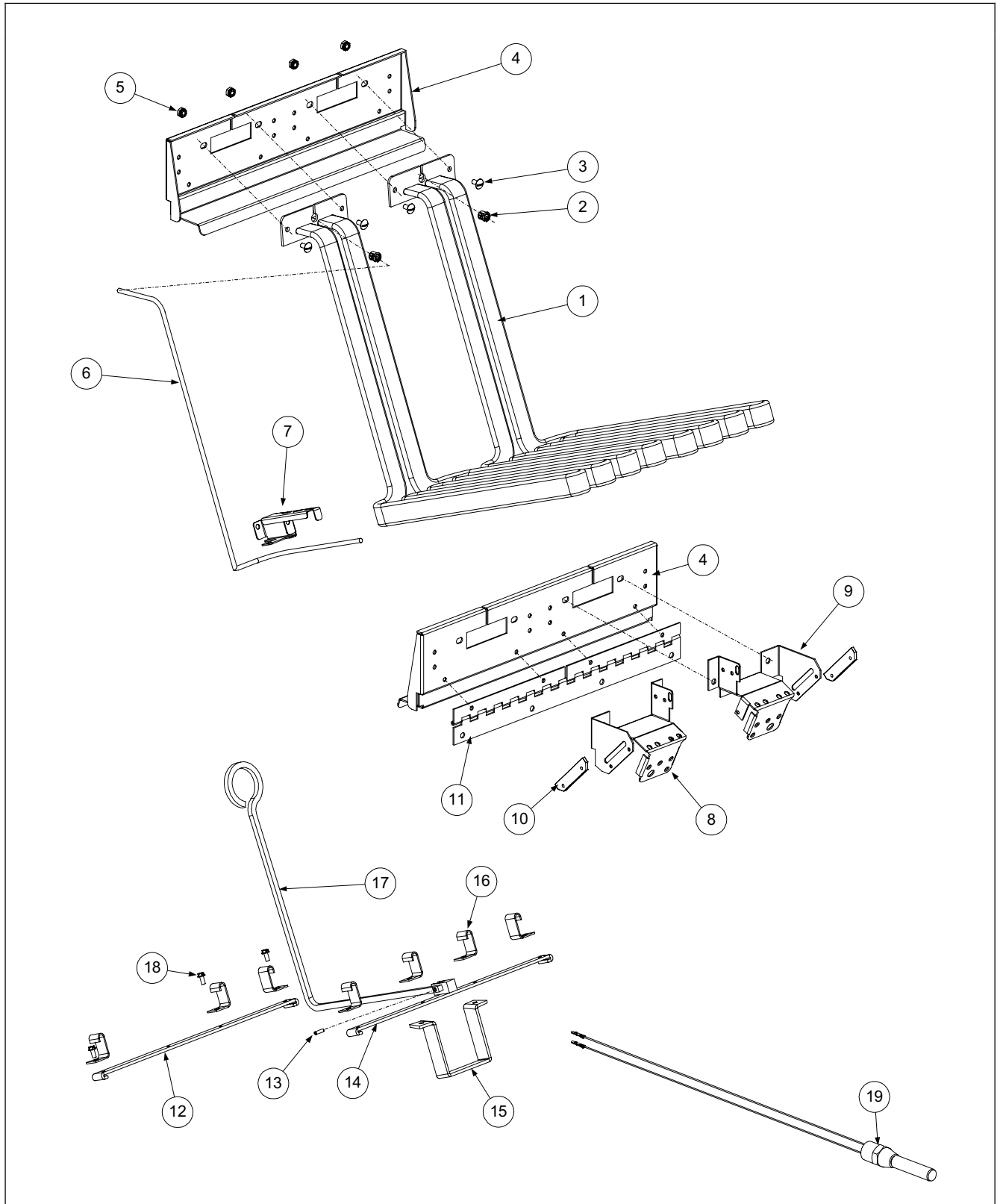
**ULTIMATE ELECTRIC SERIES FRYERS  
CHAPTER 2: PARTS LIST**

**2.11 Oil Return Line Assemblies (cont.)**

<b>Item</b>	<b>Part Number</b>	<b>Description</b>
10	813-0281	Nipple- ½ NPT x 5" NPT BM
11	813-0091	Nipple- ½ NPT x 2-½" NPT BM
12	813-0173	Union- ½" NPT BM
13	813-0381	Nipple- ½ NPT x 18-½" BM
14	823-3562	Tube, Suction
15	813-0608	Coupling- ½" NPT- Full
16	810-0697	Disconnect, Male
17	826-1392	O-ring, Suction Tube- 2 Required (Qty:5)
*	806-5932	Heater Strip- 240V/45W 36" L
* Not Illustrated		

ULTIMATE ELECTRIC SERIES FRYERS  
CHAPTER 2: PARTS LIST

2.12 Probes, High-Limits, Elements and Related Components



**ULTIMATE ELECTRIC SERIES FRYERS  
CHAPTER 2: PARTS LIST**

**2.12 Probes, High-Limits, Elements and Related Components (cont.)**

Item	Part Number	Description
1	807-3652	Element- 208V 8.5 kW
	807-3675	Element- 480V 10.25 kW
	807-3655	Element- 240V 8.5 kW
	807-3657	Element- 208V 9.0 kW
	807-3658	Element- 240V 9.0 kW
	807-2557	Element- 208V 10.25 kW
	807-3655	Element- 240V 8.5 kW ( <b>USE FOR 220V 7 kW</b> )
	807-3660	Element- 220V 8.5 kW
	807-3661	Element- 220V 10.25 kW
	807-3662	Element- 230V 7 kW
	807-3663	Element- 230V 8.5 kW
	807-3664	Element- 230V 10.25 kW
	807-2637	Element- 240V 10.25 kW
	807-3660	Element- 220V 8.5 kW ( <b>USE FOR 200V 7 kW</b> )
*	807-2137	Connector, Element- Male, 9-Pin
*	807-2138	Connector, Element- Female, 9-Pin
*	807-2135	Connector, Element- Male (High Amp), 6-Pin
*	807-2136	Connector, Element- Female (High Amp), 6-Pin
*	810-2120	Grid, Frypot- Over Element- Full Vat- BIH1721
*	803-0149	Grid, Frypot- FPH1721 Systems
2	826-1339	Bushing, .375 x .188" I.D. (Qty: 10)
3	826-1330	Screw, 10-32 x 3/8" Slotted Head- SS (Qty: 25)
4	210-1313	Tilt Plate
*	900-5378	Bracket, Tilt Plate Spring
*	809-0358	Turnbuckle, Tilt Plate Spring (Early Production Units)
*	810-0297	Spring, Tilt Plate
*	200-2932	Cover, Lower Back Wire
5	826-1376	Nut, Keps- 10-32 Hex (Qty: 10)
6	826-1791	Probe, Temperature- 15" (With Ty Wrap)- <u>All Except Electronic Thermostat Controller</u>
*	807-3653	Probe, Temperature- <u>Electronic Thermostat Controller Only</u>
*	807-1068	Connector, 2-Pin
7	910-5022	Bracket, Probe Guard
* Not Illustrated		

**ULTIMATE ELECTRIC SERIES FRYERS  
CHAPTER 2: PARTS LIST**

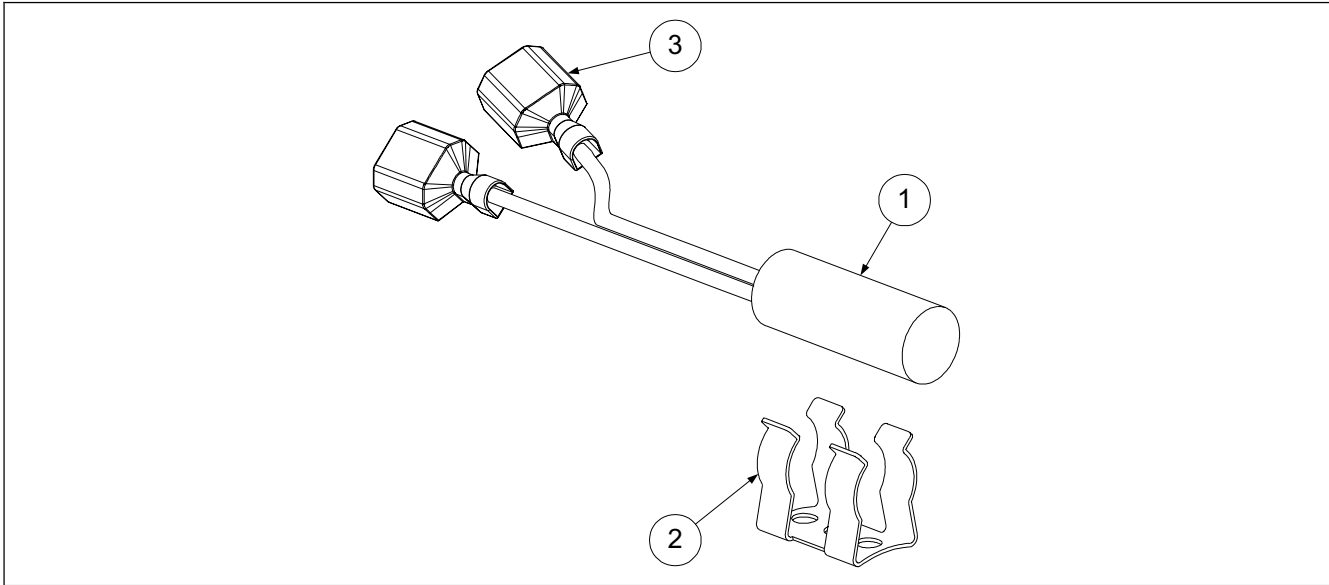
**2.12 Probes, High-Limits, Elements and Related Components (cont.)**

<b>Item</b>	<b>Part Number</b>	<b>Description</b>
8	201-1573	Bracket, Element Support- Left Side
9	202-1573	Bracket, Element Support- Right Side
10	816-0214	Nylon Bar, Tilt Plate Spring Bracket (Use .123 x .379" Pop Rivet To Attach)
11	810-0035	Hinge, Tilt- 14" Continuous
12	910-5459	Support, Back- Full-vat Element
13	810-1212	Spring Pin, Heating Element Handle
14	823-2534	Support, Front- Full-vat Element (Without Handle and Spring Pin)
15	210-1610	Support, Bottom- Full-vat Element
16	910-2042	Clamp, Element to Support
17	810-1233	Handle, Lift- Full-vat Element
18	809-0518	Screw, 8-32 x 3/8" Hex Washer Slotted
19	806-8035	High-Limit Thermostat- 435°F
* Not Illustrated		



**ULTIMATE ELECTRIC SERIES FRYERS  
CHAPTER 2: PARTS LIST**

**2.13 Tilt Safety Switch Components**



Item	Part Number	Description
1	806-6849SP	Switch, Tilt Safety
*	809-0874	Ty Wrap, Plastic- 4" (Operating Temperature 265°F)
2	807-1570	Clip, Tilt Switch
3	807-1397	Terminal, Push-On- Fully Insulated
*	809-0250	Nut, Keps- 6-32 Hex
*	809-0096	Screw, 6-32 x 5/8"- Binding, Slotted-Head
*	826-1374	Screw, #10-½ - Hex Washer Head (Qty: 25)
*	809-0766	Nut, SS- 10-32
* Not Illustrated		