



Series Code AP and Later

35 Series Gas Fryer Service and Parts Manual



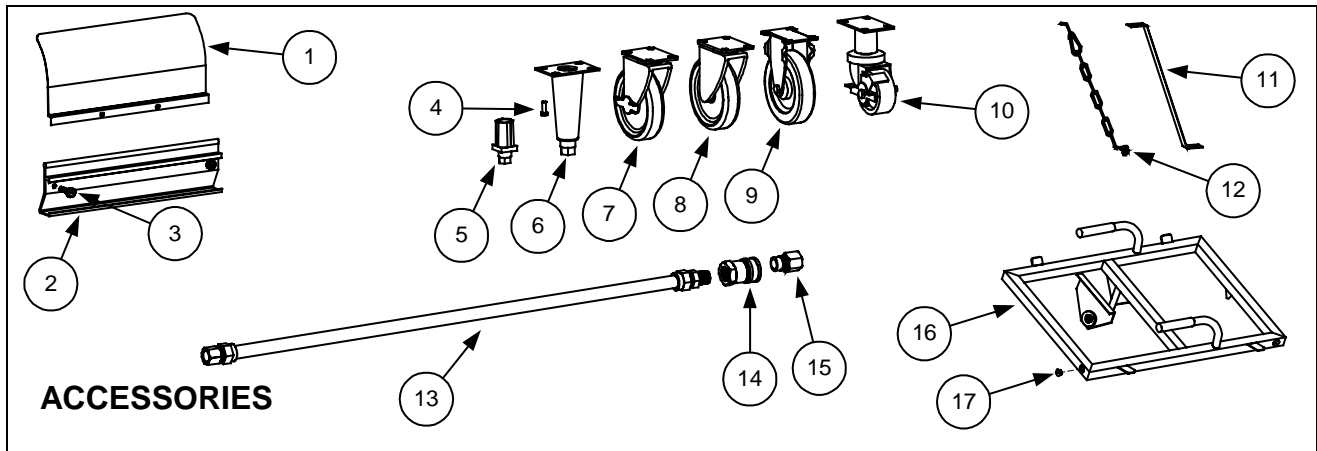
Frymaster, a member of the Commercial Food Equipment Service Association, recommends using CFESA Certified Technicians.

24-Hour Service Hotline 1-800-551-8633

Price: \$6.00

**819-5795
08-00**

35 SERIES GAS FRYERS CHAPTER 2: PARTS LIST

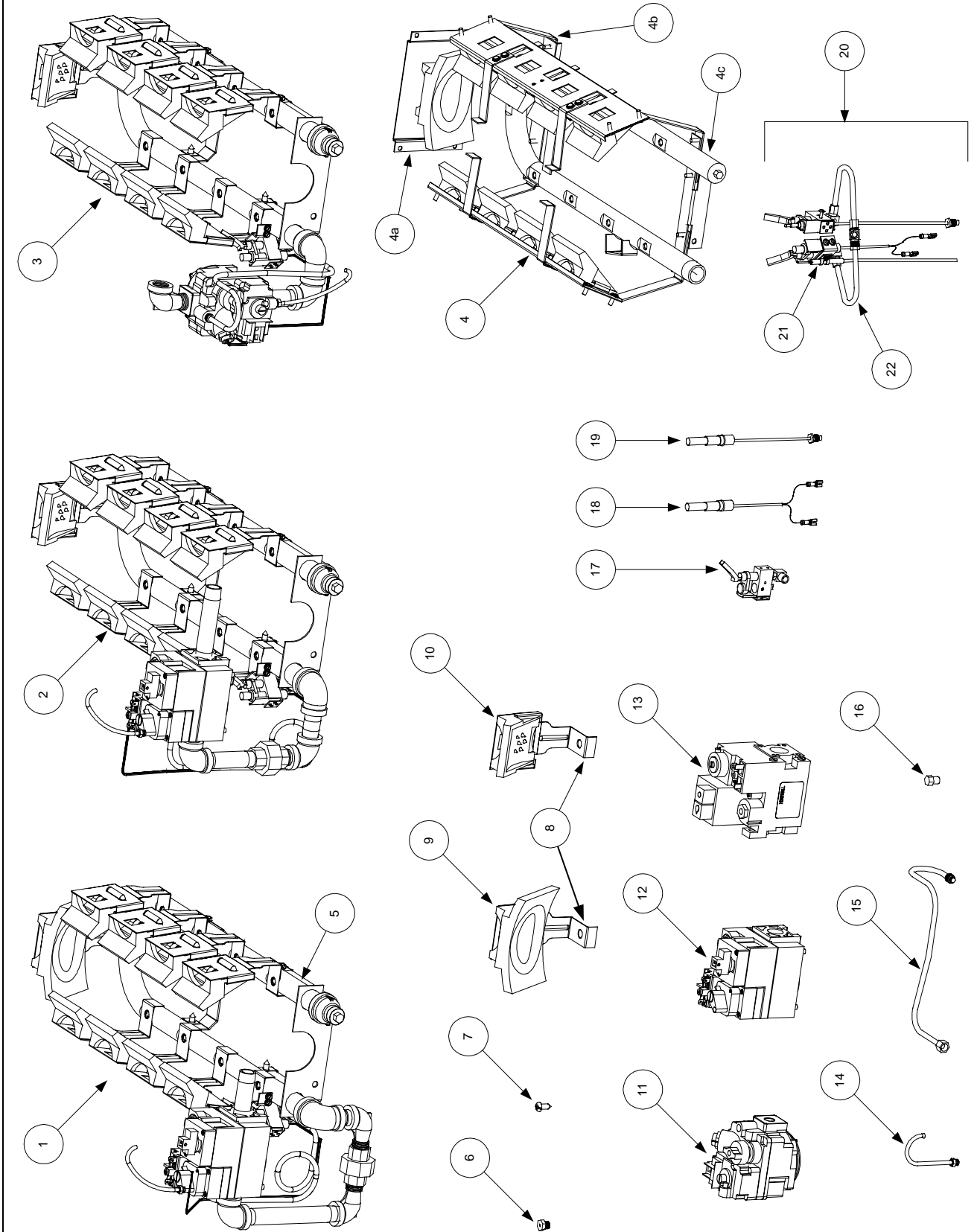


Item	Part #	Component
1	910-3557	Flue Heater Deflector
2	803-0028	Basket Hanger
3	809-0171	Basket Hanger Screw
4	809-0131	Screw, Leg Mounting
5	810-0007	Adjustable Leg, Filter Cabinet
6	806-3811	Legs (4 Per Set)
7	810-0357	Caster, 5" Swivel with Brake
8	810-0356	Caster, 5" Swivel without Brake
9	810-0378	Caster, 5" Rigid
10	810-0651	Caster, 3" with Brake, Filter Cabinet
11	826-1095	Anchor Strap Kit (for use on fryers equipped with legs only)
12	826-0900	Chain Restraint Kit (for use on fryers equipped with casters only)
13		Flexible Gas Line
	810-0085	1" X 48"
	810-0084	3/4" X 48"
14		Quick Disconnect Fitting, Female
	810-0073	1"
	810-0072	3/4"
15		Quick Disconnect Fitting, Male
	810-0074	1"
	810-0070	3/4"
16	806-4542SP	Power Shower
17	809-0415	Screw, Power Shower Clean-out Port
*	816-0071	O-Ring, Power Shower
*	814-0001	Grip, Power Shower Handle
*	816-0025	Seal, Power Shower
*	803-0020	Twin Basket
*	803-0032	Basket Support Rack
*	803-0047	Frypot Clean-out Rod
*	812-1226	Drain Extension

* Not illustrated.

35 SERIES GAS FRYERS CHAPTER 2: PARTS LIST

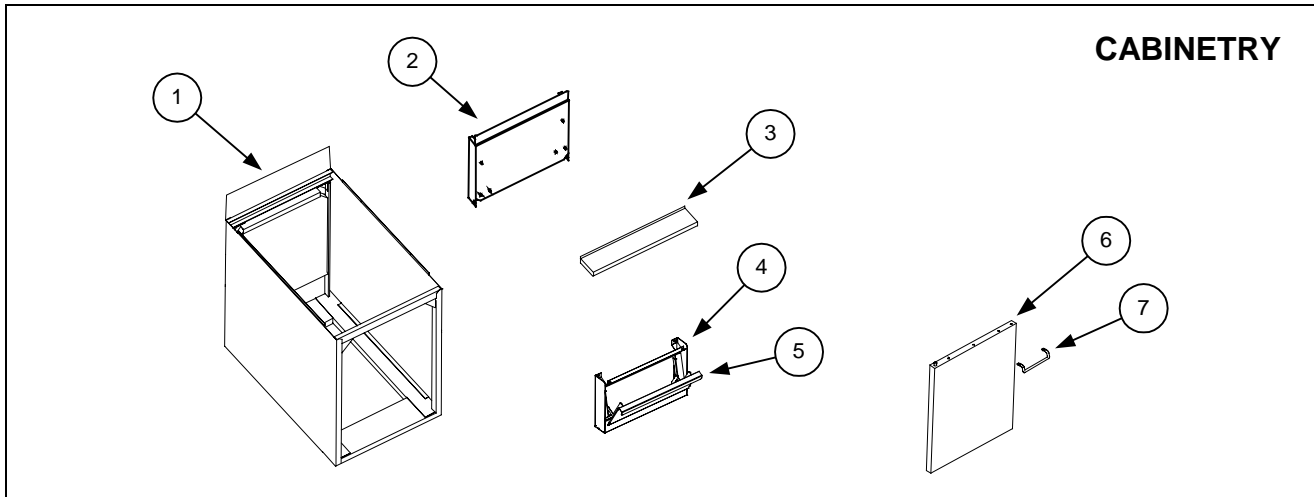
BURNER COMPONENTS



**35 SERIES GAS FRYERS
CHAPTER 2: PARTS LIST**

Item	Part #	Component
1		Burner Assembly, Non-CE MJ35, Complete with Gas Valve
	106-0132	Natural Gas (G20/G25)
	106-0235	Propane Gas (G31)
2		Burner Assembly, Non-CE FM35, Complete with Gas Valve
	106-0238	Natural Gas (G20/G25)
	106-0239	Propane Gas (G31)
3		Burner Assembly, Non-CE J2X, Complete with Gas Valve
	106-0237	Natural Gas (G20/G25)
	106-0236	Propane Gas (G31)
4	806-7222	Burner Assembly, CE MJ35, w/o Gas Valve or Piping
4a	910-2686	CE Rear Deflector (Target) Mounting Bracket
4b	806-7947	CE Deflector (Target) Assembly (Fits either side.)
4c	823-2319	Manifold, CE MJ35 Burner
5	810-1862	Manifold, Non-CE MJ/FM35 and J2X
6		Orifice
	810-0129	Natural Gas (G20/G25), 1.70mm
	810-0134	Propane Gas (G31), 1.05mm
7	809-0170	Screw, Deflector (Target) Mounting Bracket
8	910-1465	Bracket, Deflector (Target) Mounting
9	810-0424	Ceramic Deflector (Target), Large Rear
10	814-0034	Ceramic Deflector (Target), Side and Small Rear
11	Discontinued	Gas Valve, Robertshaw Millivolt (Use conversion kit 826-1579 for Natural Gas (G20/G25) or 826-1580 for Propane Gas (G31))
12		Gas Valve, Honeywell Millivolt, for use on Non-CE units
	807-1603	Natural Gas (G20/G25)
	807-1604	Propane Gas (G31)
13		Gas Valve, Honeywell Millivolt, for use on CE units
	806-7101	Natural Gas (G20/G25)
	806-7102	Propane Gas (G31)
14	810-0691	Vent Tube, Gas Valve
15	810-0703	Gas Line, 0.25-inch x 17.50-inch
16	813-0154	Plug, Gas Pressure Test Port
17		Pilot Assembly (Does not include thermopile.)
	812-1286	Natural Gas (G20/G25)
	812-1287	Propane Gas (G31)
18	810-1873	Thermopile, Double-Lead with Push-on Terminals
*	810-0159	Thermopile, Double-Lead with Forked Terminals
19	810-0617	Thermopile, Single Screw-in Lead with Standard-size Barrel
*	810-0162	Thermopile, Screw-in with Small Barrel (also requires adapter 810-0425)
20		Pilot and Thermopile Assembly, CE Dual
	106-0259	Natural Gas (G20/G25)
	106-0260	Propane Gas (G31)
21	807-1906	Element, Piezo Igniter (Trigger is Part Number 810-1001)
22	810-1173	Gas Line, 0.25-inch x 8.5-inch

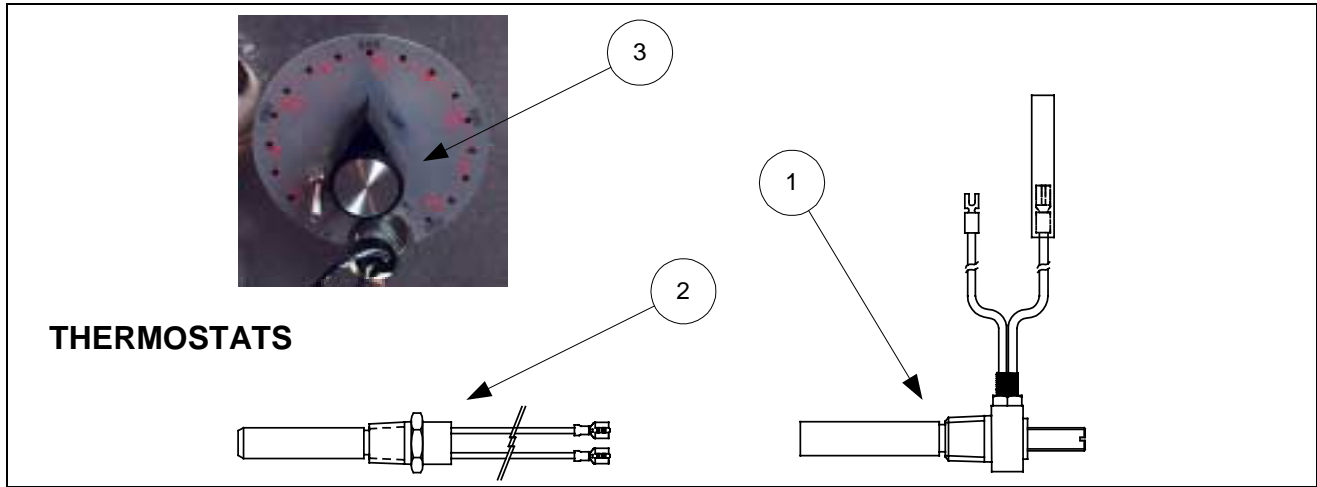
**35 SERIES GAS FRYERS
CHAPTER 2: PARTS LIST**



Item	Part #	Component
1		Cabinet Assembly
	806-4598-1SP	Stainless Steel
	806-4598SP	Cold Rolled Steel (Enameled)
2		Flue Cap
	910-5040	Single
	910-5041	Double
	910-5042	Triple
3		Top Cap
	824-0442	Single
	824-0443	Double
	824-0444	Triple
4		Control Panel Assembly with Thermostat Access Door
	806-5287	Single
	806-4733	Double
	806-4734	Triple
5	910-4480	Thermostat Access Door
6		Door Assembly
	806-6405	Short, Cold Rolled Steel (for use on G-Series units only)
	806-8320	Short, Stainless Steel for use on G-Series units only)
	806-3337	Long, Cold Rolled Steel (for use on all except G-Series units)
	806-3338	Long, Stainless Steel (for use on all except G-Series units)
7	910-3672	Handle, Door (wire form)
*	810-0275	Door Hinge Pin Spring Lock
*	806-4487	Door Pin Assembly
*	900-0734-1	Hinge, Door
*	810-0066	Magnet, Door
*	910-6039	Trough, Backsplash
*	910-6284	Cover, Frypot

* Not Illustrated.

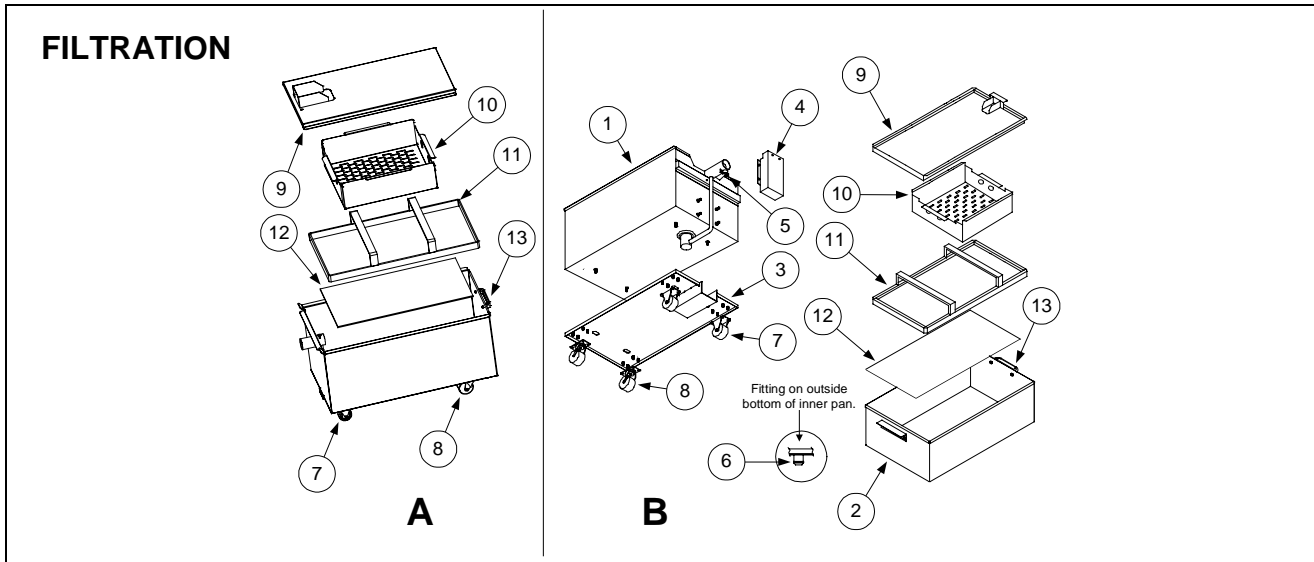
**35 SERIES GAS FRYERS
CHAPTER 2: PARTS LIST**



Item	Part #	Component
1	807-0099	Thermostat 3 Fenwal 17102
*	812-1284	Thermocouple Assy, Honeywell CE
*	810-1152	Thermocouple Assy, Honeywell CE
2	826-1177	Thermostat, 425 Degree Hi-Limit
*	806-7546	Thermostat Hi-L MJ35/GF14
*	806-5816	Thermostat Assy W/Inline Connector
*	806-7550	Thermostat Assy, CE 45 Hi-Limit
3	806-0087	Thermostat Dial Plate and Stop Assembly, MJ35
*	810-0334	Thermostat Knob for Fryers With Control Panel
*	900-0031	Plug Button
*	807-0123	Heyco Bushing
*	809-0089	Screw, Dial Plate
*	810-0345	Flexible Extension Shaft for Pre-AN Series
*	810-0009	Flexible Extension Shaft for Series AN and Later

* Not Illustrated.

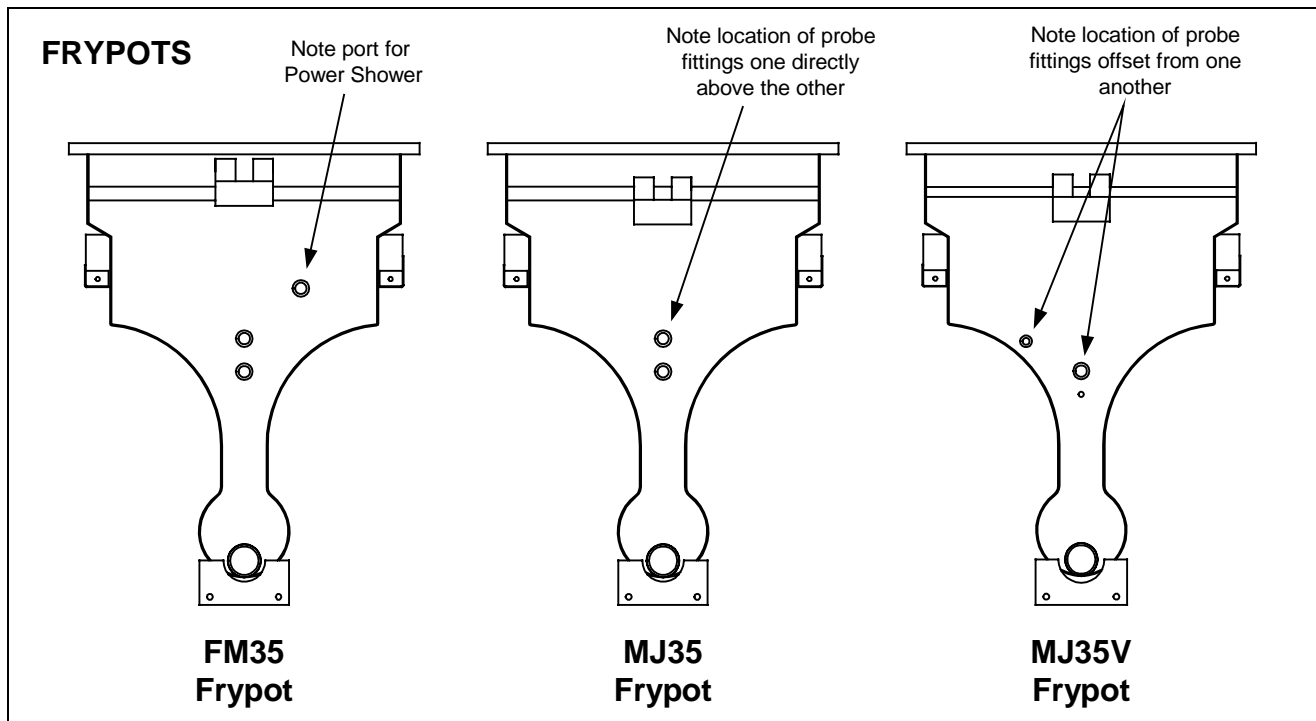
**35 SERIES GAS FRYERS
CHAPTER 2: PARTS LIST**



Item	Part #	Component
A	806-9255SP	One-Piece Filter Pan Assembly, Complete
	823-2751SP	One-Piece Pan Only
B	806-6093SP	Two-Piece Pan Assembly, Complete (Unique components are listed below.)
1	823-1360SP	Outer Pan Assembly
2	823-1731SP	Inner Pan Assembly
3	823-1361	Base, Filter Pan Assembly
4	824-0291	Cover, Suction Tube
5	910-1350	Clamp, Suction Tube
6	816-0117	O-Ring, .609 Od
*	806-4373	Heater Strip Assembly
*	811-0861	Insulation, Foam #9812
*	811-0746	Tape, Aluminum (50-Yard (46m) Roll)
		Components Used On Both Designs
7	810-0005	Caster, Rigid
8	810-0006	Caster, Swivel
9	823-1930	Cover, Drain Pan
10	824-0416	Crumb Screen
11	810-1406	Hold Down Ring Assembly
12	900-8827	Sanagrid Filter Screen
13	810-0180	Handle, Filter Pan
*	803-0170	Paper, Filter (100 Sheets)
*	803-0002	Powder, Filter (100 1-Cup Applications)
*	807-0800	Transformer 120VAC/24VAC
*	807-0012	Pump Relay
*	807-1197-2	Pump and Gasket Kit
*	807-1197	Pump Motor, 120V
*	807-1266	Pump Motor, 240V

* Not Illustrated.

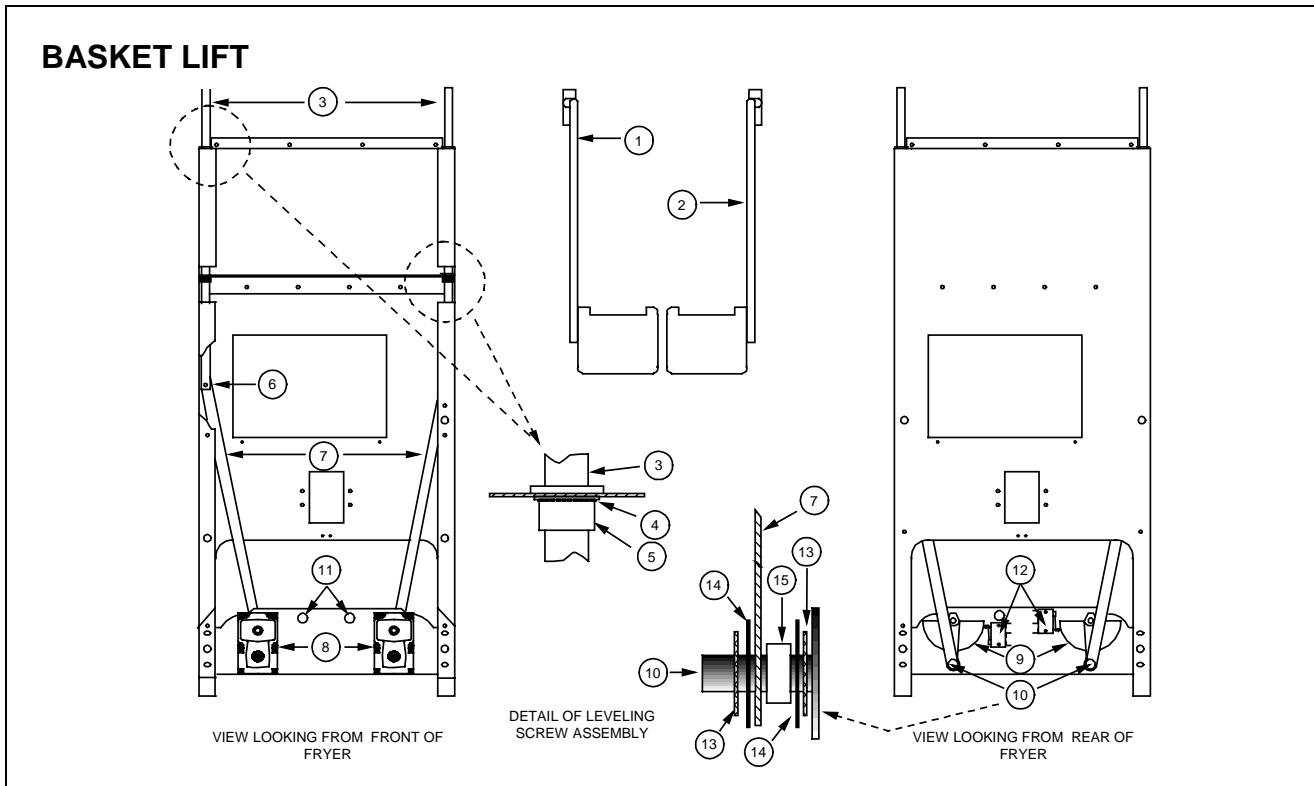
**35 SERIES GAS FRYERS
CHAPTER 2: PARTS LIST**



Item	Part #	Component
		Frypots without Insulation
	823-1111SP	Frypot without Insulation, Stainless Steel, FM35
	823-0981SP	Frypot without Insulation, Stainless Steel, MJ35
	823-2365SP	Frypot without Insulation, Stainless Steel, MJ35V
	823-1112	Frypot without Insulation, Cold Rolled Steel, FM35
	823-0980SP	Frypot without Insulation, Cold Rolled Steel, MJ35
	823-2364SP	Frypot without Insulation, Cold Rolled Steel, MJ35V
		Frypot with Flue and Insulation Installed
	806-4080SP	Frypot Assy, Stainless Steel, FM35
	806-4093SP	Frypot Assy, Stainless Steel, FM35 (Canadian units only)
	806-3942SP	Frypot Assy, Stainless Steel, MJ35
	806-7709SP	Frypot Assy, Stainless Steel, MJ35V
	806-4081SP	Frypot Assy, Cold Rolled Steel, FM35
	806-4092SP	Frypot Assy, Cold Rolled Steel, FM35 (Canadian units only)
	806-3943SP	Frypot Assy, Cold Rolled Steel, MJ35
	806-7708SP	Frypot Assy, Cold Rolled Steel, MJ35V
		Flue Assembly with Insulation
*	806-0094	MJ35 (Canadian units only)
*	806-0289SP	J2XLR (Canadian units only)
*	806-2490SP	MJ35 (has no Rear Deflector Box)
*	806-4082	FM35 (has Rear Deflector Box)
*	806-4094	FM35 (Canadian units only)

* Not Illustrated.

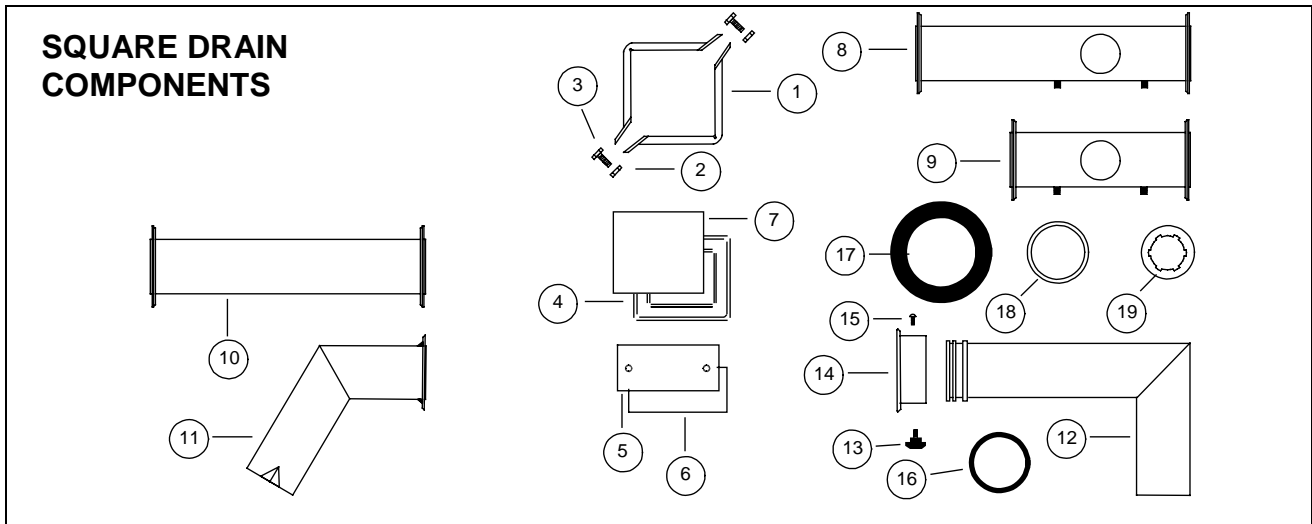
**35 SERIES GAS FRYERS
CHAPTER 2: PARTS LIST**



Item	Part #	Component
1	823-06931	Basket Lift Arm, Left
2	823-06932	Basket Lift Arm, Right
3	810-0192	Rod, Basket Lift
4	809-0082	Ring, Truarc Retaining
5	813-0035	Bushing, Bronze
6	810-0170	Pin, Connecting
7	920-6076	Link, Basket Lift
8	807-0107	Gear Motor, 120v Basket Lift
8	807-0108	Gear Motor, 240v Basket Lift
9	810-0052	Bellcrank
10	809-0155	Leveling Screw
11	807-0124	Bushing, Plastic
12	807-0240	Microswitch
13	809-0194	Washer, Steel, 5/16"
14	826-1381	Washer, Nylon
15	810-0220	Spacer, Tubular
*	900-3783	Panel, Access, Cold Rolled Steel
*	910-3783	Panel, Access, Stainless Steel
*	806-2079	Wiring Harness, Basket Lift Motor
*	806-7019	Wiring Harness, Non-Modular Basket Lift
*	809-0113	Screw, Gear Motor Mounting, Slot Head, 8-32 X 1 1/2"
*	809-0503	Screw, Gear Motor Mounting, Hex Head, 8-32 X 1 1/2"

* Not illustrated.

**35 SERIES GAS FRYERS
CHAPTER 2: PARTS LIST**



Item	Part #	Component
1	810-0396	Clamp Section (Requires 2 Per Connection)
2	809-0071	Nut, ¼-20
3	826-1375	Screw, 10-32 X ¾
4	816-0103	Seal (Connection Gasket)
5	900-0758	Cover, Clean-out
6	816-0021	Gasket, Clean-out
*	826-1382	Wing Nut, Clean-out Cover Retaining
7	900-0757	Cover, Drain End
		Drain Sections
8	823-0717	Full Vat, 15.5" Long
9	823-0718	End, Full Vat, 8.12" Long
10	823-0731	Extension, Spreader Cabinet, 15.5" Long
11	823-0719	Drain Outlet, Fixed
	806-4068	Drain Outlet Assembly, Swivel, Complete
12	823-1091	Drain Tube, Swivel
13	810-0388	Knob, Clamping
14	823-1092	Collar, Drain
15	809-0115	Screw, 10-32
16	816-0083	O-Ring, 2.5" Id
17	816-0092	Grommet, Drain Tube
18	826-1345	Washer, Drain Tube Retaining
19	809-0347	Nut, Drain Tube Retaining