



47 Series Gas Fryers

Service & Parts Manual

 **Frymaster**[®]



Frymaster, a member of the Commercial Food Equipment Service Association, recommends using CFESA Certified Technicians.

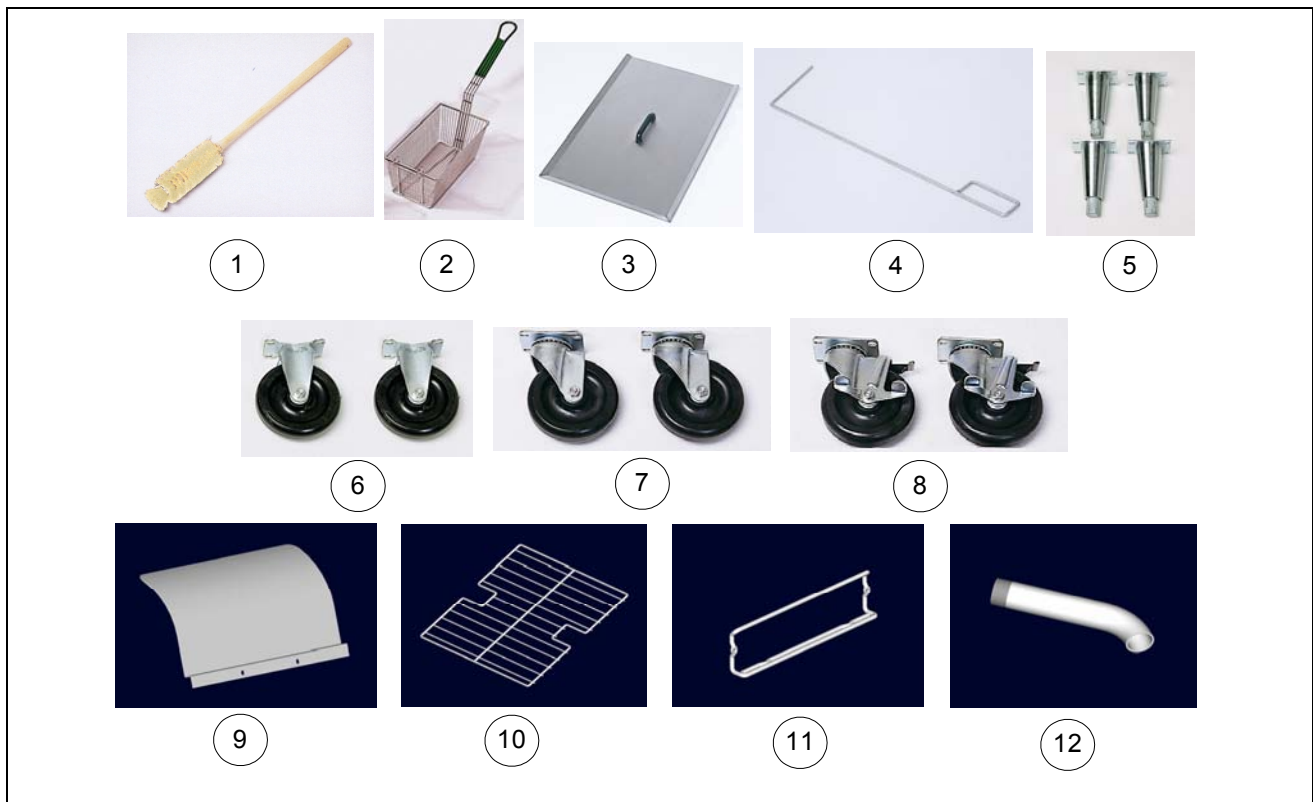
24-Hour Service Hotline 1-800-551-8633

Price: \$12.00

**819-5384
MAY 2003**

47 SERIES GAS FRYERS CHAPTER 2: PARTS LIST

2.1 Accessories

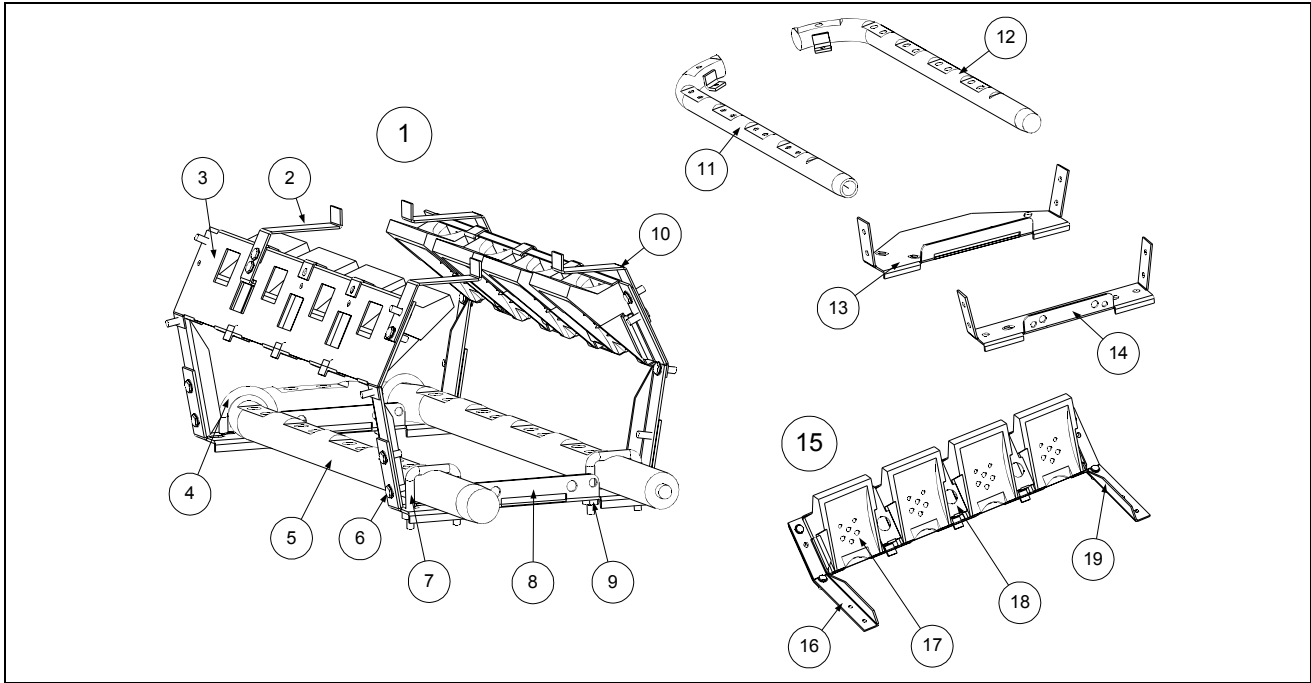


ITEM	PART #	COMPONENT
1	803-0209	Brush, Frypot Clean-out
2	803-0022	Basket, Twin
*	803-0099	Basket, Full
3	806-5518	Frypot Cover, Full-Vat
*	806-3232	Frypot Cover, Split-Vat
*	826-0993SP	Handle Kit, Frypot Cover (Full- and Split-Vat)
4	803-0197	Frypot Clean-out Rod (Fryer's Friend)
5	806-3811	Kit, 4-Leg
*	806-5043	Kit, 1-Leg
6	810-0378	Caster, Rigid
7	810-0356	Caster, 5", Without Brake
8	810-0357	Caster, 5", With Brake
*	826-0900	Chain Restraint Kit (for use with casters above)
9	910-3557	Flue Deflector
10	803-0132	Basket Support Rack, Full Vat
*	803-0338	Basket Support Rack, Dual Vat
11	810-1403	Basket Hanger, Wireform
*	809-0171	Screw, Basket Hanger
12	812-1226SP	Drain Extension Pipe (for use on units without built-in filtration systems)

* Not Illustrated

**47 SERIES GAS FRYERS
CHAPTER 2: PARTS LIST**

2.2 Burner Manifold Assemblies and Component Parts

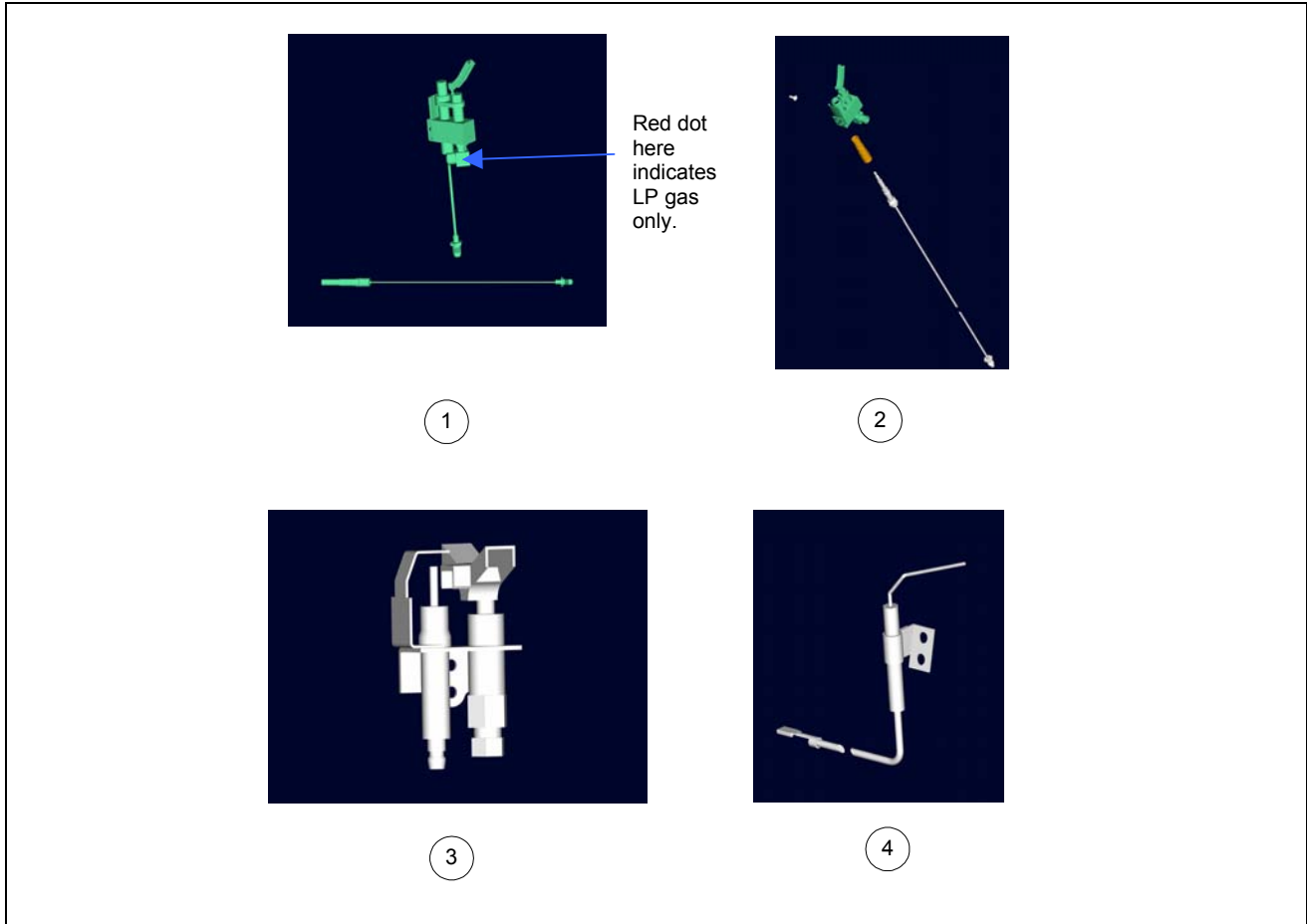


ITEM	PART #	COMPONENT
1	806-5927SP	Burner Manifold Assembly, Full Vat, Complete
*	806-5928SP	Burner Manifold Assembly, Dual Vat, Complete
2	910-2027	Standoff, Target- Rear
3	910-2031	Support, Target, Back Plate
4	809-0499	U-bolt & Retainer- ¼-20 x 1-½"
5	810-0989	Manifold, Burner- Full-vat
6	809-0500	Screw, 410 SS, # 10 x ½, Hex Washer Head
7	809-0498	U-bolt–Square-bent- ¼-20 x 1-½"
8	910-2022	Bracket, Manifold Mounting, Full Vat
9	826-1372	Nut, ¼-20 w/Grip (Qty: 10)
10	910-2027	Standoff, Target- Front
11	810-0987	Burner Manifold, Dual Vat, Left
12	810-0988	Burner Manifold, Dual Vat, Right
13	910-2024	Bracket, Manifold Mounting, Dual Vat, Rear
14	910-2023	Bracket, Manifold Mounting, Dual Vat, Front
15	806-7949	Burner Manifold Sub-Assembly (Target Assembly)
16	911-2029	Support, Target, Left End
17	814-0034	Burner Target, Ceramic
18	910-2025	Bracket, Target Retaining
19	912-2029	Support, Target, Right End
*	826-1357	Orifice, Burner Manifold, Natural Gas (Drill #53, 1.45mm— Qty: 10)
*	826-1387	Orifice, Burner Manifold, LP Gas (Drill #65, 0.86mm— Qty: 10)

* Not Illustrated

**47 SERIES GAS FRYERS
CHAPTER 2: PARTS LIST**

2.3 Burner Ignition System Components



ITEM	PART #	COMPONENT
1		Pilot Assembly w/Thermopile (for use w/Non-CE Pilot Ignition Systems)
	810-0615	Natural Gas
	810-0616	Propane Gas
	810-1873	Thermopile
2		Pilot Assembly w/Thermocouple (for use w/CE Pilot Ignition Systems)
	806-8688SP	Natural Gas
	806-8689SP	Propane Gas
	812-1284	Thermocouple
3		Ignitor Assembly, Honeywell (for use w/Electronic Ignition Systems)
	807-1707	Natural Gas
	807-1708	Propane Gas
4	807-1928	Electrode, Flame Sensor (for use w/Electronic Ignition Systems)
*	806-5830SP	Ignition Cable (Spark Plug Wire)
*	826-1155	Ignitor Kit, Piezo (Optional)
*	810-1001	Trigger
*	807-1906	Electrode Assembly

* Not Illustrated

**47 SERIES GAS FRYERS
CHAPTER 2: PARTS LIST**

2.4 Gas Valve Assemblies and Connection Components

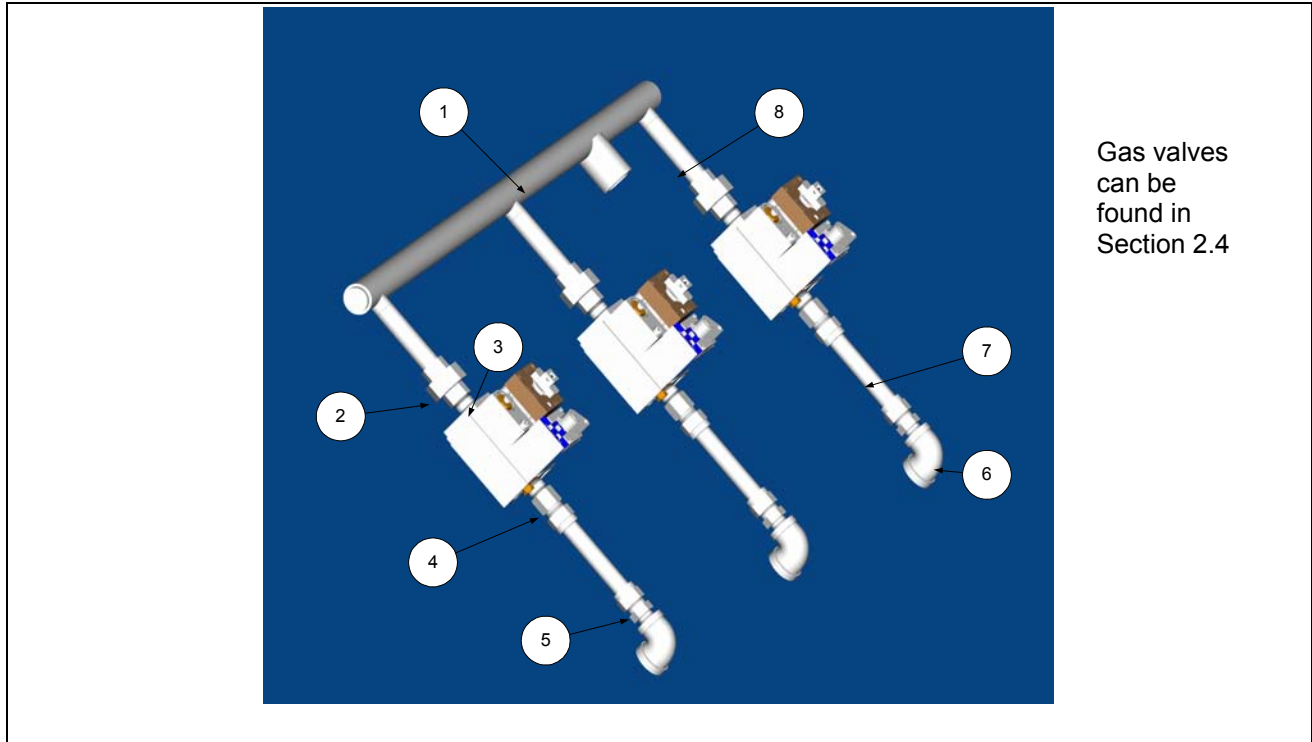


ITEM	PART #	COMPONENT
1		Gas Valve Assembly (for use w/CE Pilot Ignition Systems)
	807-2091	Natural Gas
	807-2127	Propane Gas
	810-1155	CE Accessory Kit- (Converts Inlet/Outlet Flanges to ½" NPT)
2		Gas Valve Assembly (for use w/Non-CE Electronic Ignition Systems)
	810-0786	Natural Gas
	810-0787	Propane Gas
3		Gas Valve Assembly (for use w/Non-CE Pilot Ignition Systems)
	807-3294	Natural Gas
	807-3295	Propane Gas (Full-vat Units)
*	806-0236	Capacitor, .002 µF (for use w/810-0786, 810-0787)
*		Vent Tube, Gas Valve
	810-1166	For use w/CE Gas Valves 807-2091 and 807-2127
	810-0691	For use w/Non-CE Gas Valves 810-0786, 810-0787
*		Hose, Flexible, Gas
	810-0084	¾-inch (19.05mm) ID, 48 inches (1.2m) long
	810-0085	1-inch (25.4mm) ID, 48 inches (1.2m) long
*		Quick Disconnect Fitting, Female
	810-0072	¾-inch (19.05mm)
	810-0073	1-inch (25.4mm)
*		Quick Disconnect Fitting, Male
	810-0070	¾-inch (19.05mm)
	810-0074	1-inch (25.4mm)

* Not Illustrated

**47 SERIES GAS FRYERS
CHAPTER 2: PARTS LIST**

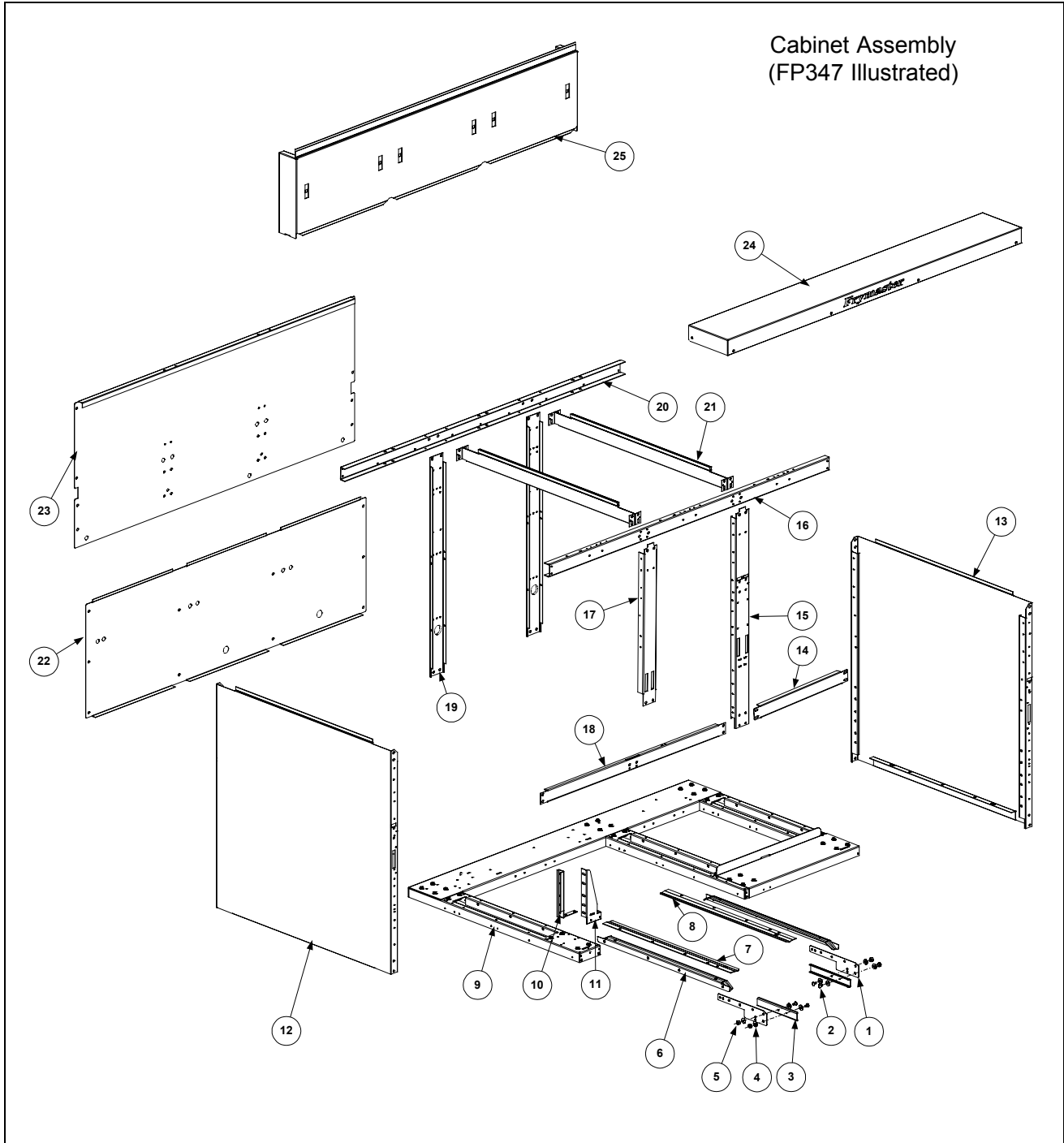
2.5 Gas Manifold Assemblies



ITEM	PART #	COMPONENT
1		Gas Manifold
	810-0995	FP247
	810-0997	FP247-2L
	810-0996	FP247-2R
	810-0950	FP247-4
	810-0960	FP347
	810-0994	FP347-2L
	810-0947	FP347-2R
	810-0993	FP347-4L
	810-0991	FP347-4R
	810-0992	FP347-6
	810-1119	MJ147-2
2	813-0173	Union, 1/2" NPT Black Pipe
3	813-0087	Nipple, 1/2 x 1-1/2" NPT Black Pipe
4	810-1669	Adapter, Female- 5/8 O.D. x 1/2"
5	810-1668	Adapter, Male- 5/8 x 1/2"
6	813-0068	Elbow, Reducing- 3/4 x 1/2"
7		Flexline
	810-1159	5" (Used for all but MJ147-2)
	810-1067	8.5" (Used for MJ147-2 only)
8	813-0093	Nipple, 1/2 x 4" NPT Black Pipe

47 SERIES GAS FRYERS
CHAPTER 2: PARTS LIST

2.6 Cabinet Assemblies and Component Parts



**47 SERIES GAS FRYERS
CHAPTER 2: PARTS LIST**

ITEM	PART #	COMPONENT
1	900-1959	Bracket, Filter Lock
2	809-0422	Screw, FootPrint III Cover
3	900-1957	Lock, Filter
4	809-0189	Washer, ¼ Flat
5	826-1372	Nut, Hex- ¼-20 Nickel Plated (Qty:10)
6	910-5244	Rail, Lower- Unitary (Left or Right)
7	911-4690	Rail, Filter, Top Left
8	912-4690	Rail, Filter, Top, Right
*	900-5671	Support, Filter Hose (FP47's)
*	900-5673	Shield, Heat (FP47's)
9	806-7350SP	Base Assembly, FP347
*	806-7351SP	Base Assembly, FP447
*	806-7349SP	Base Assembly, FP247
*	900-2568SP	Base Assembly, MJ47
*	806-7346SP	Base Assembly, MJ247
*	806-7347SP	Base Assembly, MJ347
*	806-7348SP	Base Assembly, MJ447
10	901-1948	Channel, Side Support- Left
*	902-1948	Channel, Side Support- Right
11	901-1810	Gusset, Cabinet- Left
*	902-1810	Gusset, Cabinet- Right
12	910-7678SP	Panel, Side, Left or Right, w/No Access Openings (S/S)
*	900-7678SP	Panel, Side, Left or Right, w/No Access Openings (CRS)
*	911-7679SP	Panel, Side, Left, w/4 Access Openings (S/S)
*	901-7679SP	Panel, Side, Left, w/4 Access Openings (CRS)
13	912-7679SP	Panel, Side, Right, w/4 Access Openings (S/S)
*	902-7679SP	Panel, Side, Right, w/4 Access Openings (CRS)
14	900-2562	Support, Cross Cabinet
15	900-7734	Post, Long Cabinet
16	900-9430	Brace, Top- Front, Unitary Cabinet
17	900-4773	Post, Short- Door
18	900-7729	Support, Cross Cabinet
19	900-2797	Support, Cabinet- Rear
20	900-9352	Brace, Top- Rear
21	900-7326	Divider, Cabinet
22	900-2798SP	Back, Lower- FP & MJ347
*	900-2799SP	Back, Lower- FP & MJ247
*	900-2288	Back, MJ47

* Not Illustrated

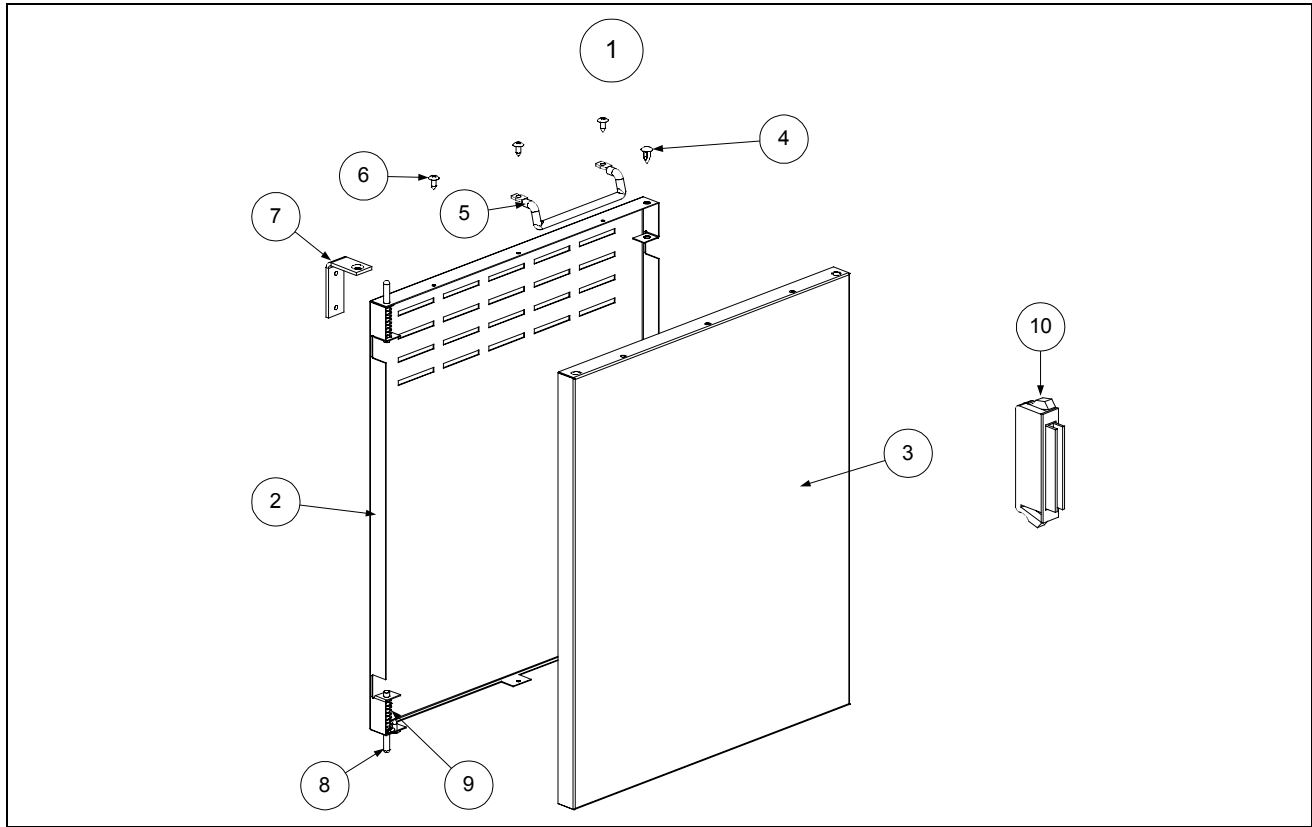
List continued on following page.

**47 SERIES GAS FRYERS
CHAPTER 2: PARTS LIST**

ITEM	PART #	COMPONENT
23	900-9415	Back, Upper- FP & MJ347
*	900-7658	Back, Upper- FP & MJ247
*	809-0266	Screw, #10-1/2 Phillips Head, Zinc Plated
24	824-0406	Top Cap, Triple
*	824-0407	Top Cap, Quad
*	824-0404	Top Cap, Single
*	824-0405	Top Cap, Double
25	823-2541	Flue Cap, Triple Fryer Battery
*	823-2540	Flue Cap, Double Fryer Battery
*	910-5018	Flue Cap, Single Fryer
*	910-3122	Battery Strip, Flue Cap
*	826-1351	Nutsert (For Basket Hanger Screw- Qty:10)
*	900-5486	Support, Flue Cap To Back
*	910-7443	Strip, Top Connecting
* Not Illustrated		

**47 SERIES GAS FRYERS
CHAPTER 2: PARTS LIST**

2.6.1 Door Assemblies and Component Parts

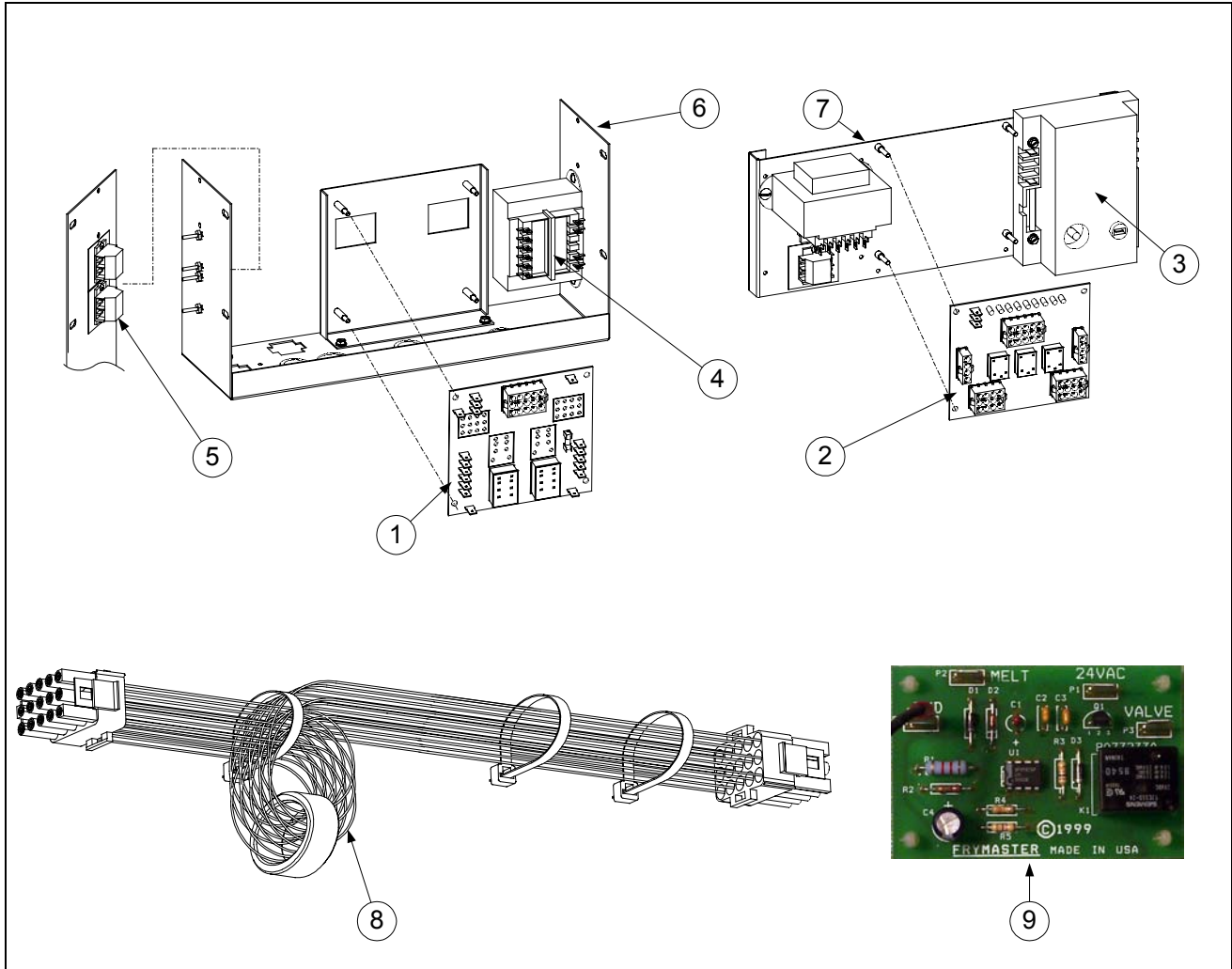


ITEM	PART #	COMPONENT
1	806-7383SP	Door Assembly, Left
*	806-7384SP	Door Assembly, Right
2	900-2815	Liner, Door, Left or Right
3	824-0580SP	Panel, Door, Left or Right
4	809-0545	Clip, Nylon Arrow
5	810-1422	Handle, Door, Wireform
6	809-0266	Screw, #10 x 1/2, Phillips, Zinc Plated
7	810-1508	Hinge, Door
8	106-0554SP	Door Pin Assembly
*	809-0193	Washer, Nylon- Flat 1/4" (Door Pin Bushing)
9	826-1343	Spring, Door Hinge (Qty: 10)
10	810-1105	Magnet, Door

* Not Illustrated

47 SERIES GAS FRYERS
CHAPTER 2: PARTS LIST

2.7 Component Box/Shield Component Parts



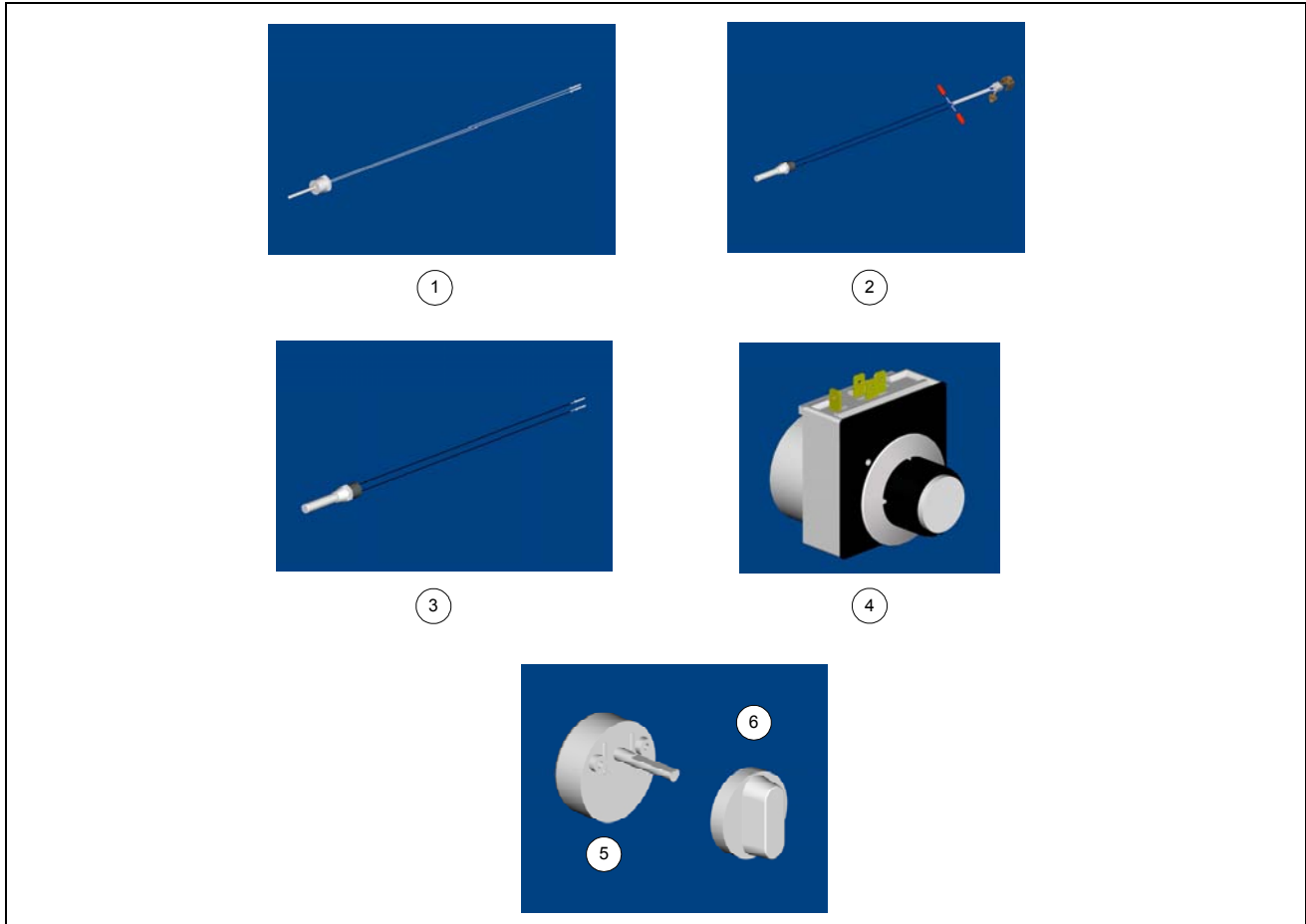
**47 SERIES GAS FRYERS
CHAPTER 2: PARTS LIST**

ITEM	PART #	COMPONENT
1	106-0386	Board, Interface (Without Electronic Ignition) (also replaces 806-3398)
*	807-0833	Relay, Heat (For 806-3398)
*	807-0834	Relay, Basket Lift- 12V 15A (For 806-3398)
2	806-5857	Board, Interface (With Electronic Ignition)
*	809-0349	Spacer, Aluminum- Interface Board- 4-mm x 6-mm
*	807-1241	Spacer, Aluminum- Interface Board - 5/8" Unthreaded
*	806-3660	Sound Device, High Output
*	806-4797	Buzzer, 24V
3	807-1006	Module, Ignition, 4-Second Delay, Honeywell
*	807-2971	Module, Ignition, PCB (Australia Only)
*	806-5879SP	Wire Assembly, Ignition Module
4	807-2176	Transformer, V/F Dual Voltage- 100-120VAC
*	807-1999	Transformer, V/F Dual Voltage- 208-240VAC
5	810-1164	Block, Terminal (Screwless)- 2-Wire
*	810-1168	Block, Terminal (Screwless)- 3-Wire
6		Component Shield Assembly- Pilot Ignition
*	806-6907SP	100-120V Full Vat- Includes Items #1, #4 and #5
*	806-6904SP	100-120V Dual Vat- Includes Items #1, #4 and #5
*	806-6835SP	230-240V Full Vat- Includes Items #1, #4 and #5
*	806-6832SP	230-240V Dual Vat- Includes Items #1, #4 and #5
7		Component Shield Assembly- Electronic Ignition
*	806-8174SP	100-120V Full Vat- Includes Items #2, #3, #4 and #5
*	806-7988SP	230-240V Full Vat- Includes Items #2, #3, #4 and #5
*		Component Shield Assembly- Solid State Melt Cycle Timer
	806-6908SP	100-120V Full Vat- Includes Items #4, #5 and #9
	806-6905SP	100-120V Dual Vat- Includes Items #4, #5 and #9
	806-6836SP	230-240V Full Vat- Includes Items #4, #5 and #9
	806-6833SP	230-240V Dual Vat- Includes Items #4, #5 and #9
*		Component Shield Assembly- No Melt Cycle or Interface Board
*	806-6909	100-120V Full Vat- Includes Items #4 and #5
*	806-6906	100-120V Dual Vat- Includes Items #4 and #5
*	806-6837	230-240V Full Vat- Includes Items #4 and #5
*	806-6834	230-240V Dual Vat- Includes Items #4 and #5
*	806-8175SP	Control Box Assy, FP/MJ-47, Full Vat, Electronic Ignition, 120V
*	806-8048SP	Control Box Assy, FP/MJ-47, Full Vat, Electronic Ignition, 240V
8	806-2071	Cable Assembly, 15-Pin, Computer to Interface Board
*	WIR0163SP	Cable Assembly, Transformer Box to Interface Board
*	806-5830SP	Cable Assembly, Ignition (Spark Plug Wire)
9	826-1546	Kit, Solid State Melt Cycle Timer

* Not Illustrated

**47 SERIES GAS FRYERS
CHAPTER 2: PARTS LIST**

2.8 Probes, High-Limits and Basketlift Timers

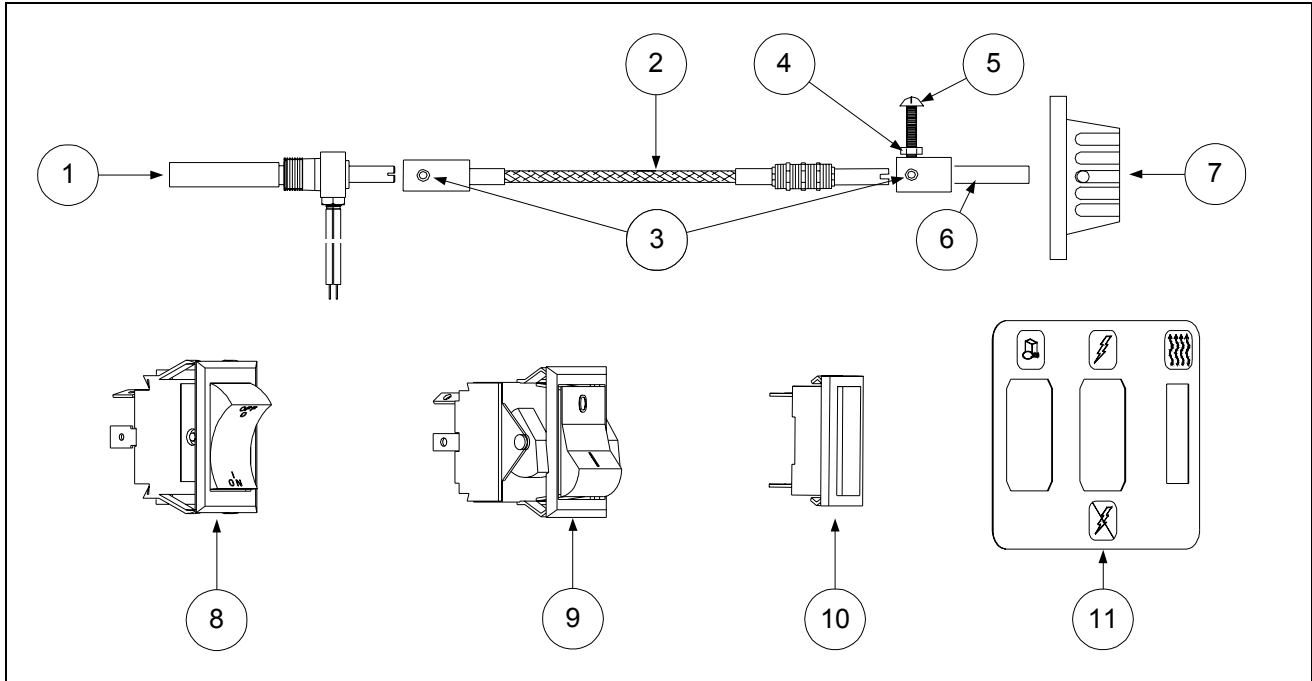


ITEM	PART #	COMPONENT
1	806-4206	Probe, Temperature Control (not for use with Thermostat Controllers)
*	210-0681	Probe Guard
2	806-7550	Thermostat, High-Limit (CE)
3	826-1177	Thermostat, High-Limit (Non-CE)
4		Timer, Basket Lift, Electric
*	826-1575	120V, 60 Hz, 5-Minute
*	826-1552	120V, 60 Hz, 15-Minute
*	807-0401	240V, 50/60 Hz, 18-Minute
*	810-1822	Knob, Electric Basket Lift Timer (Telechron)
*	810-1823	Push Button, Electric Basket Lift Timer (Telechron)
5	810-0585	Timer, Basket Lift, Mechanical, 15-Minute
6	810-1287	Knob, Mechanical Timer
*	826-1020	Timer Service Kit (Includes Timer, Knob & Bezel)

* Not Illustrated

**47 SERIES GAS FRYERS
CHAPTER 2: PARTS LIST**

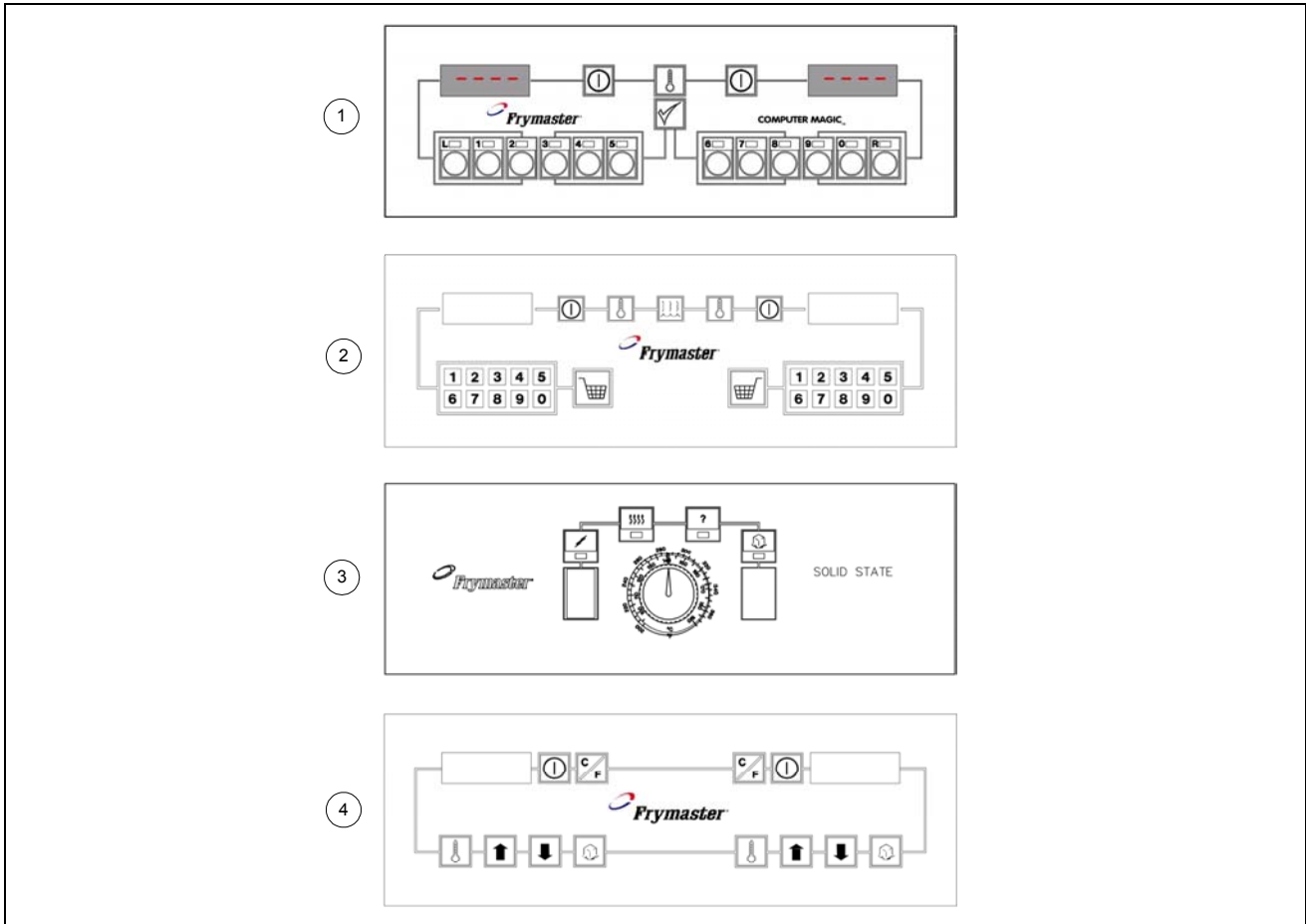
2.9 Operating Thermostat and Related Components



ITEM	PART #	COMPONENT
1	806-0183	Thermostat, Operating (for use with Thermostat Controller only)
2	810-0999	Shaft, Flexible
3	809-0157	Set Screw
4	809-0050	Nut, Hex
5	826-1361	Screw, Stop (Qty: 25)
6	810-0276	Adapter, Shaft End
7	810-0334	Knob, Thermostat
8	807-3498	Switch, Rocker, Melt Cycle ON/OFF
9		Switch, Rocker, Melt Cycle I/O, w/24V Lamp
	807-2196	Green (CE)
	807-2197	Amber (CE)
10	807-1525	Light, 24V, White
11	802-0765	Label, Control Panel

**47 SERIES GAS FRYERS
CHAPTER 2: PARTS LIST**

2.10 Computers and Controllers

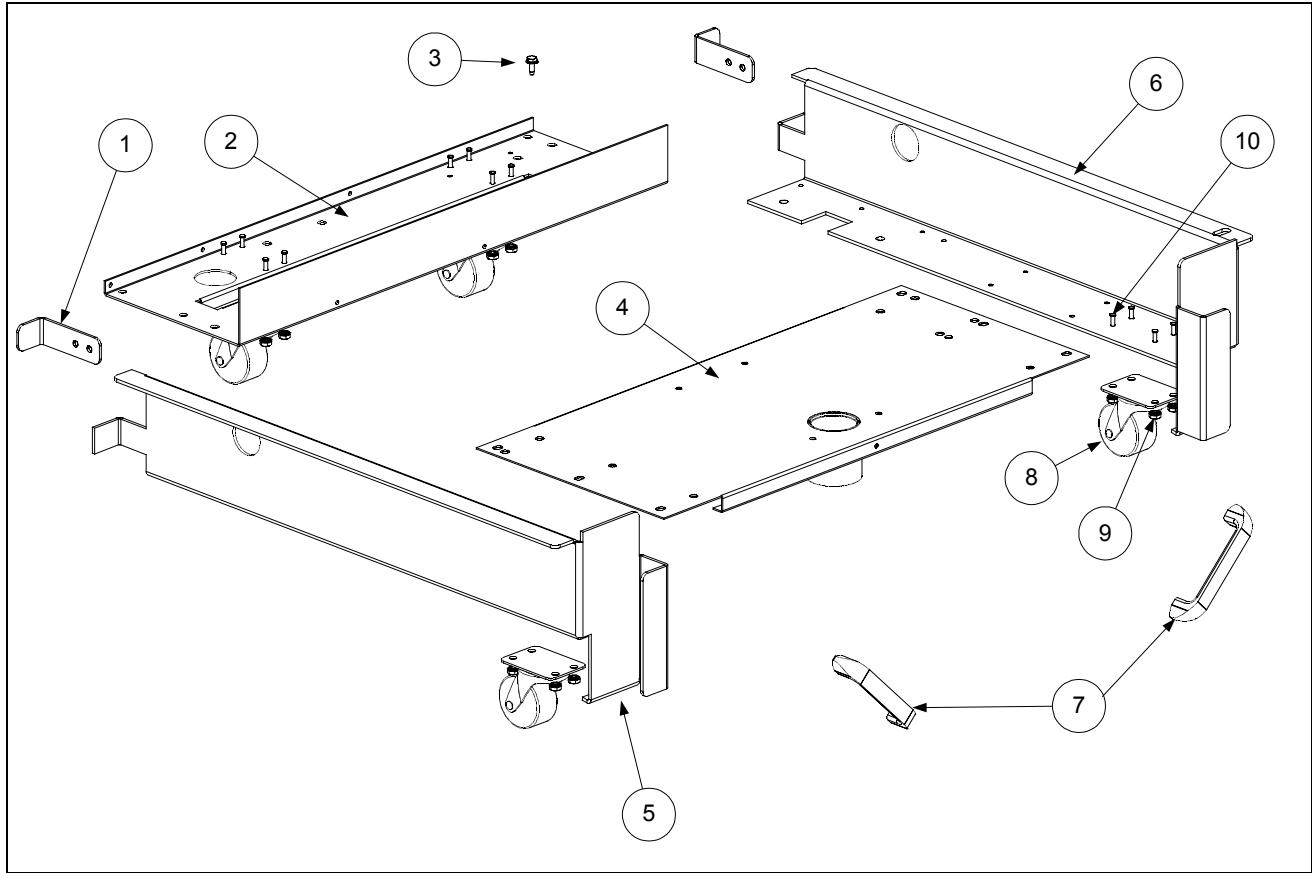


ITEM	PART #	COMPONENT
1		Computer Magic III
*	106-1149SP	Full Vat
*	106-1184SP	Dual Vat
*	106-1199SP	Full Vat (CE)
*	106-1203SP	Dual Vat (CE)
2		Computer, Basket Lift Timer
*	106-2079SP	Full Vat
*	806-7484SP	Full Vat (CE)
3		Analog Controller
*	806-3564	Dual Vat
*	806-3559	Full Vat
4		Digital Controller
*	106-1512	Dual Vat
*	106-1501	Full Vat

* Not Illustrated

**47 SERIES GAS FRYERS
CHAPTER 2: PARTS LIST**

2.11 Filter Base Assembly- FootPrint III Series

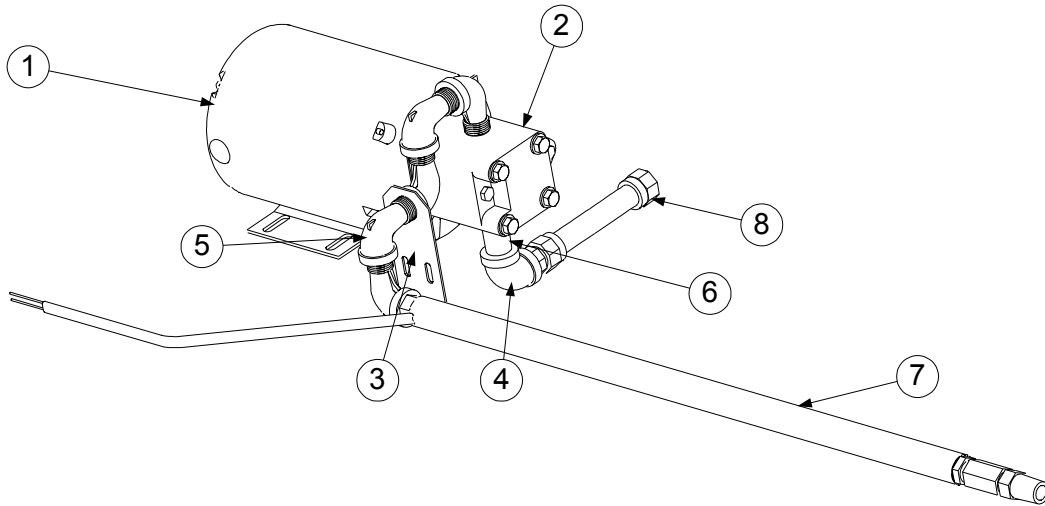


ITEM	PART #	COMPONENT
1	900-1953	Bracket, Filter Pan Lock
2	900-5396	Support, Motor
3	826-1374	Screw, #10-½ Hex Head (Qty: 25)
4	823-2289	Support, Filter Pan
5	201-0755	Frame, Base, Left Side
6	202-0755	Frame, Base, Right Side
7	826-0993SP	Handle (FPIII Units Prior to 4/98)
8	810-0006	Caster, Swivel, Rokite #127-2
9	826-1376	Nut, 10-32 Hex (Qty: 10)
10	809-0021	Stud, 10-32 x 5/8 S/S
*	806-5954SP	Base Assembly, Complete

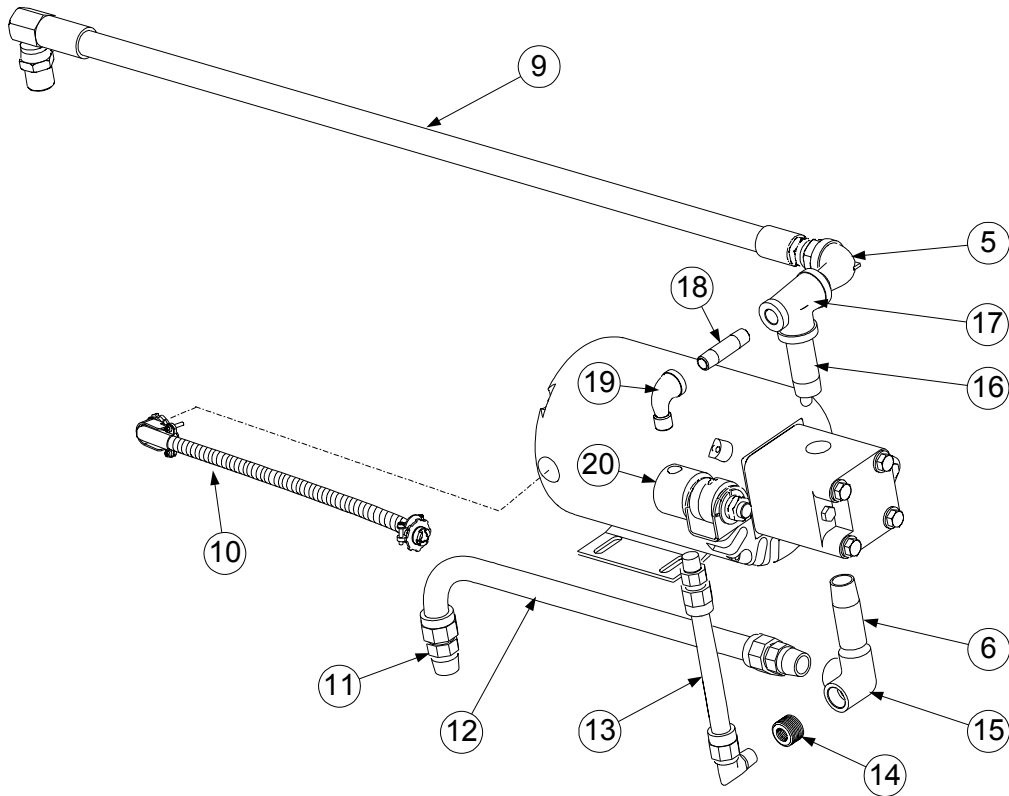
* Not Illustrated

**47 SERIES GAS FRYERS
CHAPTER 2: PARTS LIST**

2.12 Filter Motors, Pumps and Related Components



Standard FP III Configuration (Prior to August 1997)



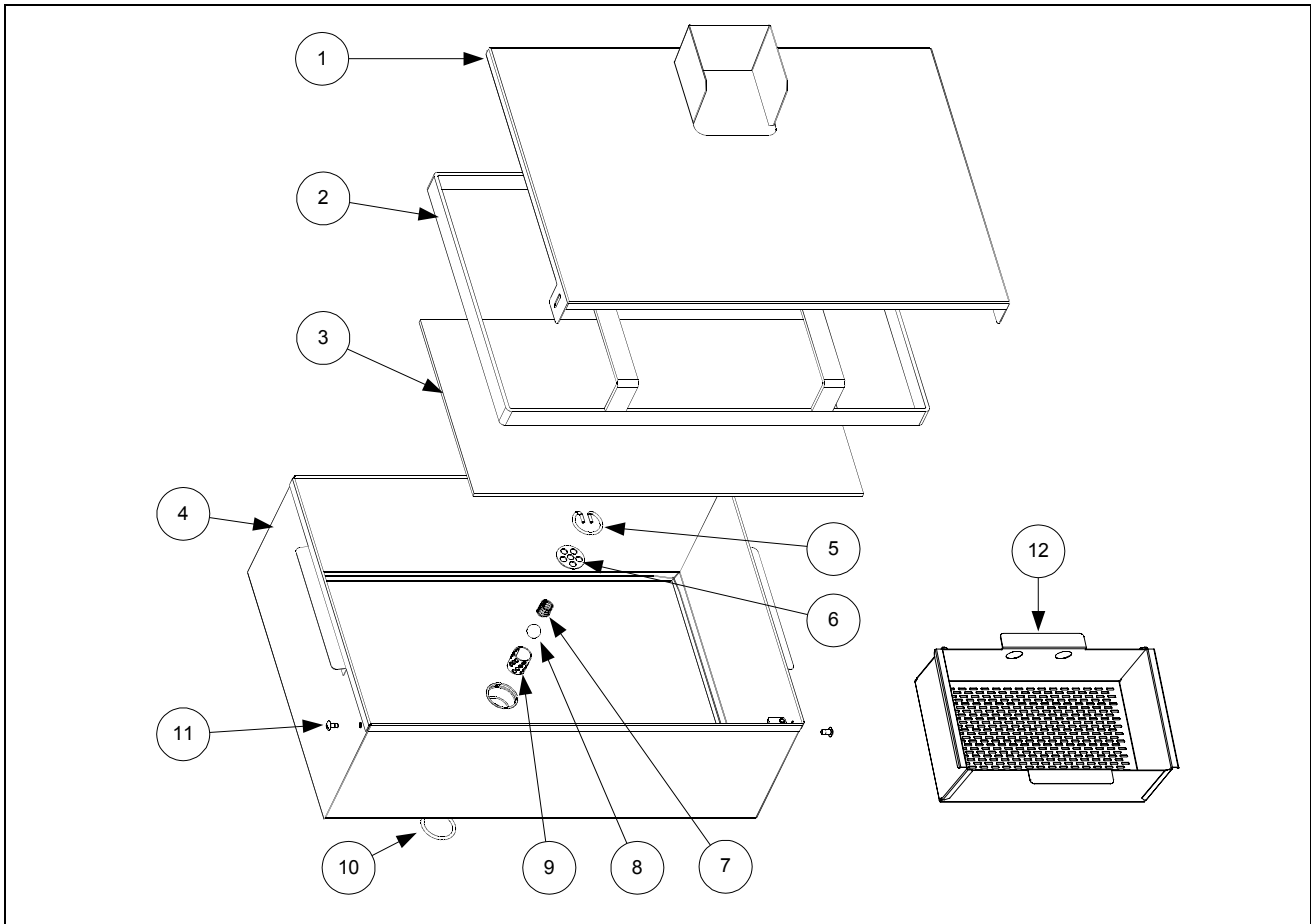
Standard FP III Configuration (August 1997 and Later)

**47 SERIES GAS FRYERS
CHAPTER 2: PARTS LIST**

ITEM	PART #	COMPONENT
1		Motor and Gasket Kits
	826-1712	100-115VAC
	826-1266	208VAC
	826-1270	230-250VAC
*	900-7558	Cover, Motor
2	826-1261	Pump, 4GPM (15LPM) (includes gasket 816-0093)
*	816-0093	Gasket, Pump/Motor
3	900-1958	Support, Oil Return
4	813-0062	Elbow, 1/2", 90°
5	813-0165	Elbow, 1/2", 90° Street
6	813-0265	Nipple, 1/2 x 2-1/2" NPT BM
7		Hose, Heated Oil Return
	810-0945	120VAC
	810-1037	208-250VAC
8	810-1159	Flexline, Steel, 5" Oil Return (Pump to Filter Pan Outlet)
9	810-1423	Hose, Teflon w/Stainless Braiding, 30" (from pump)
10	806-6728SP	Pump Wiring Assembly
11	810-1668	Adapter, Male 5/8 x 1/2" (Not Included With 1/2" Flexlines)
*	810-1669	Adapter, Female 5/8 x 1/2" (Not Included With 1/2" Flexlines)
12	810-1057	Flexline, 13" (39.5cm) Oil Return
13	810-1373	Flexline, Pump Bypass
14	813-0304	Bushing, Reducer- 1/2 to 1/4"
15	813-0331	Elbow, 1/2" NPT With Side Outlet
16	813-0265	Nipple, 1/2" x 2-1/2" NPT BM
17	813-0530	Tee, Reducing- 1/2 x 1/4 x 1/2" NPT BM
18	813-0537	Nipple, 1/4 x 2" NPT BM
19	813-0543	Elbow, Street- 1/4" x 90°
20	807-2484	Valve, Solenoid Vent
*	816-0093	Gasket, Pump Motor
*	807-1600	Thermal Switch, Baldor Motors
*	807-1598	Thermal Switch, Magnatek Motors
*	810-1421	Cable, Filter, FP47 (FPIII Units Equipped With Solenoid Valves)
*	807-2172	Cable, Filter, FP47 (FPIII Units With Heated Oil Return Hoses)
*	900-5673	Shield, Heat, FP47
* Not Illustrated		

**47 SERIES GAS FRYERS
CHAPTER 2: PARTS LIST**

2.13 Filter Pan Assembly- FootPrint III Series

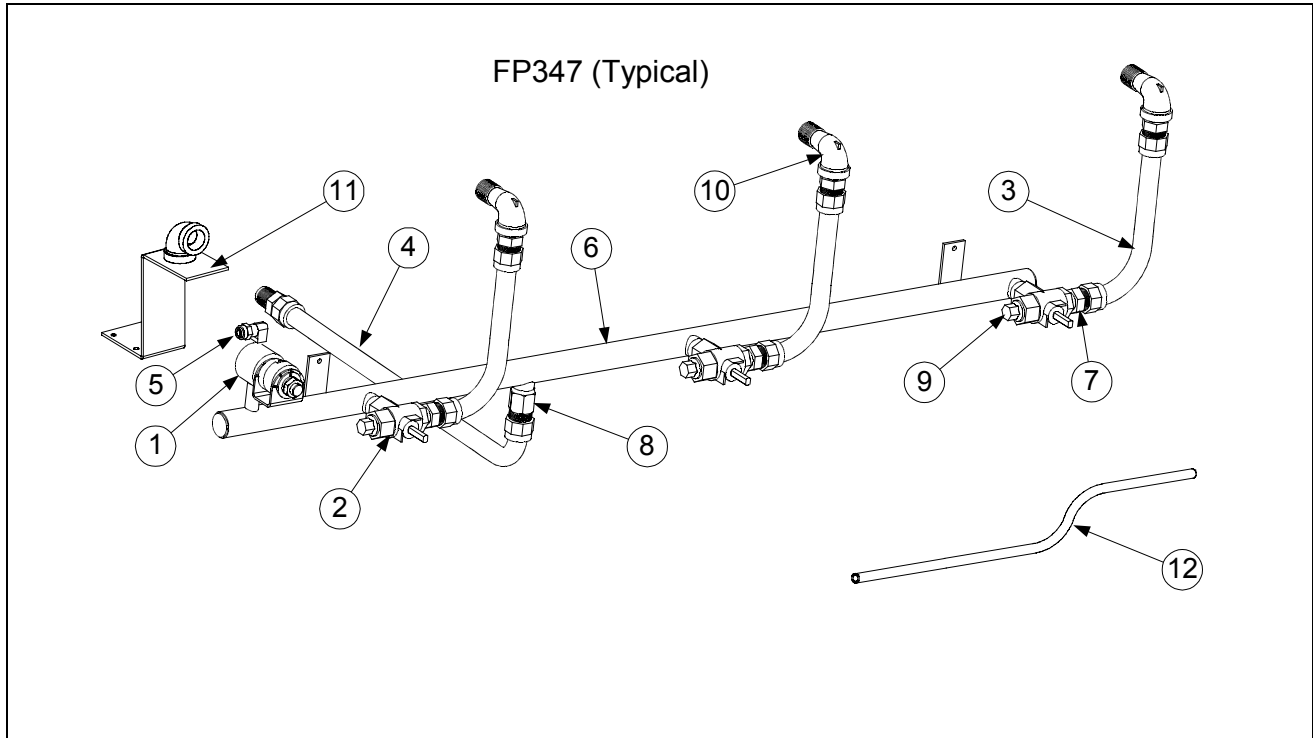


ITEM	PART #	COMPONENT
1	823-2027	Cover, Filter Pan
2	810-1408	Ring, Hold-Down
3	900-8819	Screen
4	823-1979SP	Pan
5	810-1387	Retainer, Check Valve
6	900-5448	Strain Plate, Check Valve
7	810-0946	Spring, Check Valve
8	810-0948	Ball, Check Valve
9	810-1388	Tube, Check Valve
10	816-0181	O-Ring, Check Valve
11	809-0422	Screw, Shoulder
12	824-0430	Screen, Crumb
*	806-5618SP	Pan Assembly, Complete (Crumb Screen Not Included)
*	803-0170	Paper, Filter- 100 Sheet Pack

* Not Illustrated

**47 SERIES GAS FRYERS
CHAPTER 2: PARTS LIST**

2.14 Oil Return Manifolds and Related Components

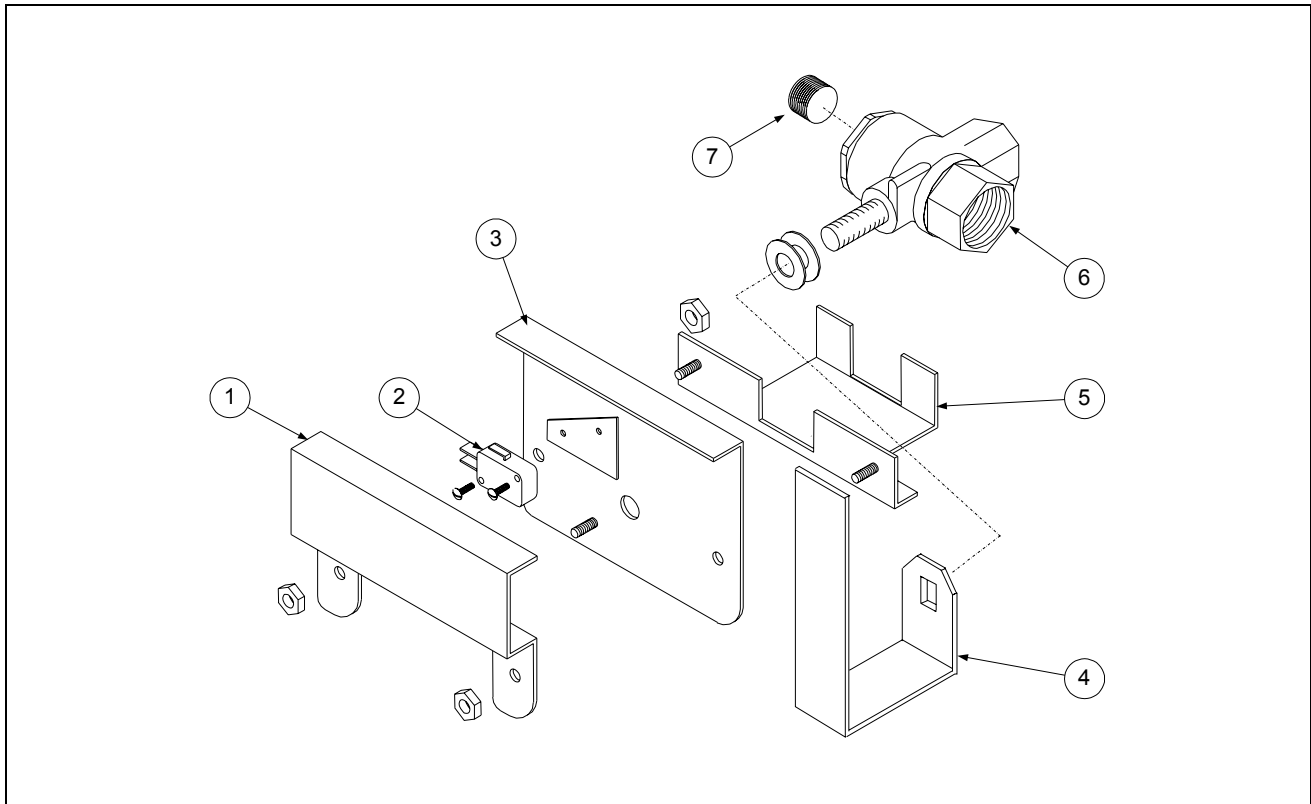


ITEM	PART #	COMPONENT
1	807-2484	Valve, Vent, Solenoid, ¼" NPT (for use on manifold and pump)
2	810-1003	Valve, Ball 3-Way, 180°
3	810-1067	Flexline, Dormont ½ x 8-½"
4	810-1369	Flexline, Dormont, ½ x 17-½" (filter to manifold)
*	810-1370	Flexline, Dormont, ½ x 9" (to Power Shower)
5	810-1372	Fitting, 90° (for use with Teflon vent tube P/N 826-1720)
6		Manifold, FP47 Power Shower Oil Return
	810-1394	Manifold, FP347
*	810-1362	Manifold, FP247
*	810-1395	Manifold, FP447
7	810-1668	Adapter, Male 5/8 x ½" (For ½" I.D. Flexlines)
8	810-1669	Adapter, Female 5/8 x ½" (For ½" I.D. Flexlines)
9	813-0156	Plug, ½" Hex Head NPT BM
10	813-0165	Elbow, Street- 90° NPT BM
11	823-2583	Support, Oil Return, FP47
12	826-1720	Teflon Vent Tube Kit (Solenoid to Square-Drain Vent)

* Not Illustrated

**47 SERIES GAS FRYERS
CHAPTER 2: PARTS LIST**

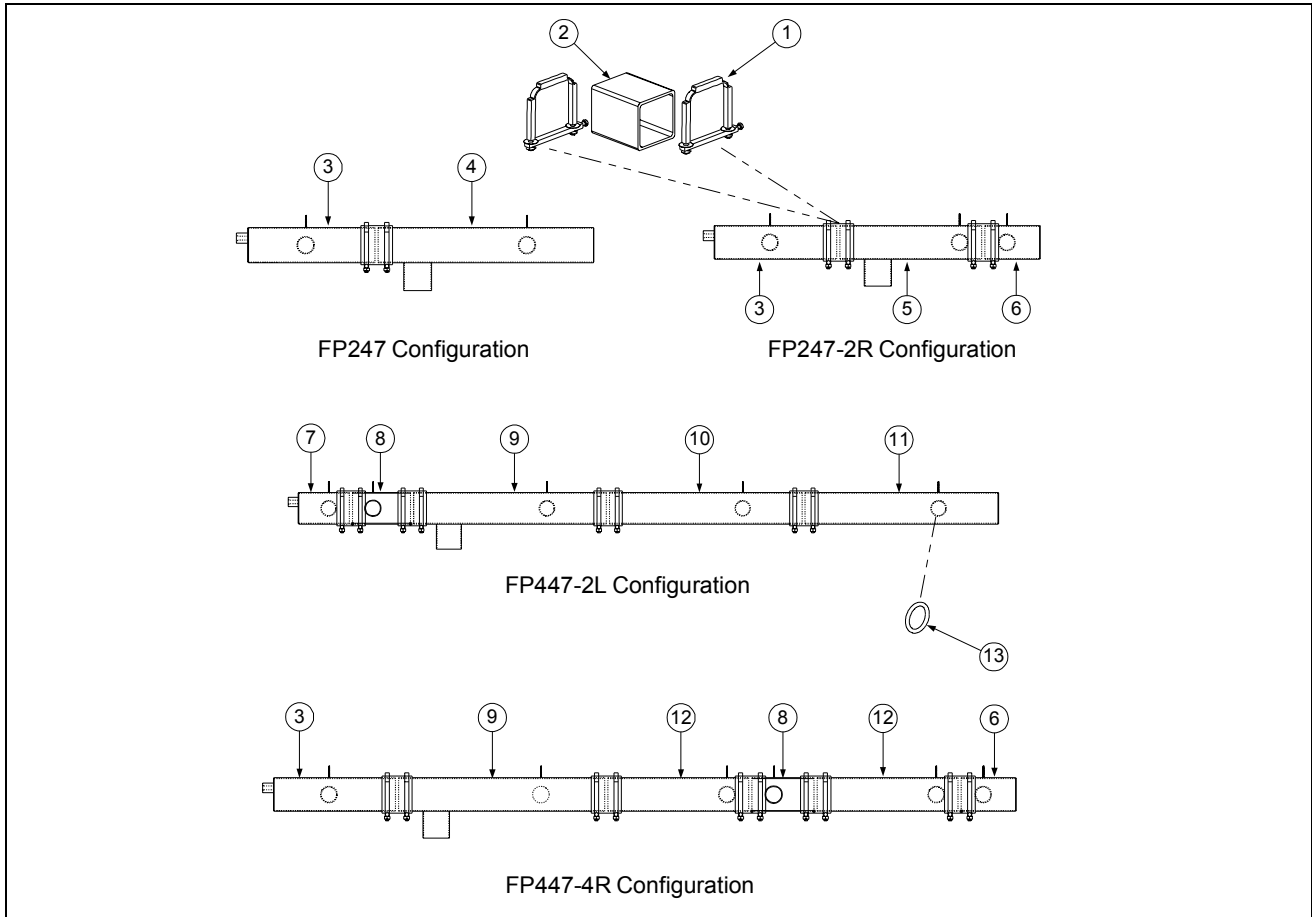
2.15 Oil Return Valve Assembly



ITEM	PART #	COMPONENT
1	900-2110	Cover, Microswitch
2	807-2104	Microswitch
3	806-9385	Support, Microswitch
4	900-1950	Handle, Oil Return
5	900-2111SP	Support, Oil Return Valve
6	810-1003	Valve, 180° 3-Way Ball
7	813-0463	Plug, Pipe, 1/2" NPT (Hex/Square Socket)

**47 SERIES GAS FRYERS
CHAPTER 2: PARTS LIST**

2.16 Drain Manifold Assembly and Related Components

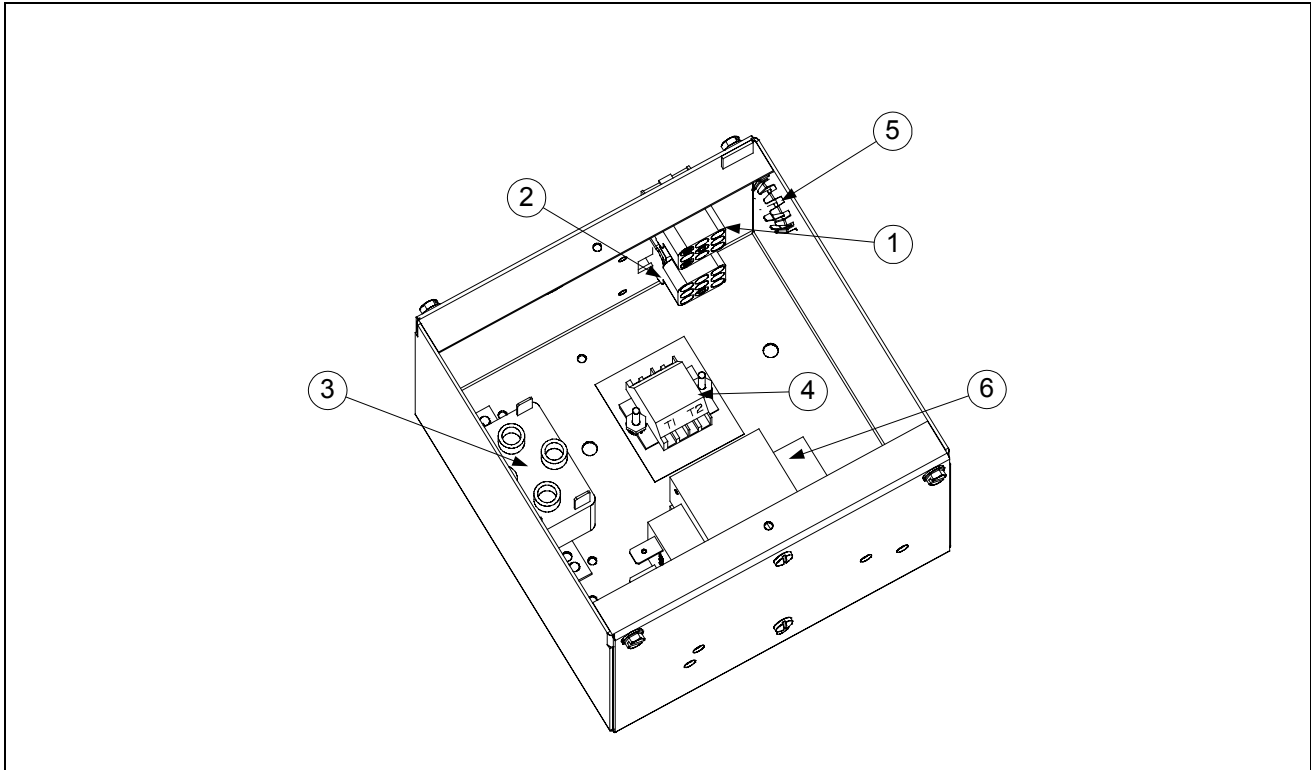


ITEM	PART #	COMPONENT
1	806-6374SP	Clamp Assembly
2	816-0420	Seal (Connection Gasket)
Drain Sections		
3	823-2585	End, Left, Long for Full Vat- Vented
*	823-2445	End, Left, Long for Full Vat (Old-Style FootPrint)
4	823-2242	Filter Pan Outlet (closed) for Full Vat
5	823-2239	Filter Pan Outlet (open) for Dual Vat
6	823-2244	End, Right, Short for Dual Vat-Right
7	823-2584	End, Left, Short for Dual Vat-Vented
*	823-2237	End, Left, Short for Dual Vat- (Old-Style FootPrint)
8	823-2238	Section, Short for Dual Vat
9	823-2245	Filter Pan Outlet (open) for Full Vat
10	823-2246	Section, Long for Full Vat
11	823-2240	End, Right, Long for Full Vat
12	823-2241	Section, Long for Dual Vat
13	816-0135	O-Ring

* Not Illustrated

**47 SERIES GAS FRYERS
CHAPTER 2: PARTS LIST**

2.17 Filter Component Box Assemblies

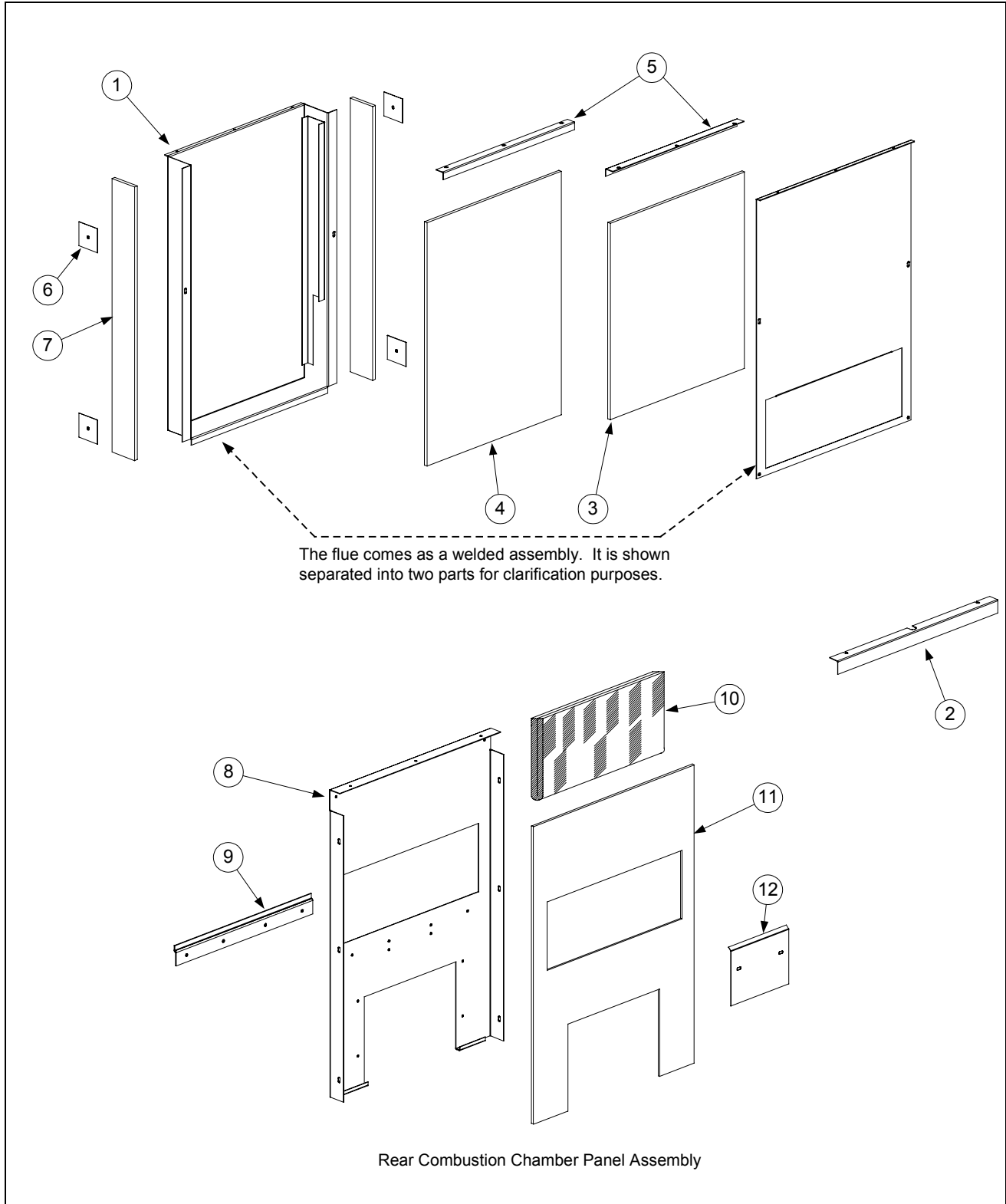


ITEM	PART #	COMPONENT
		Complete Assemblies
	806-8358SP	100-120V Replacement Filter Box Assembly
	806-8359SP	208-250V Replacement Filter Box Assembly
		Components
1	806-8021SP	Plug Assembly, FP III Non-Reversing (Upper Plug)
2	806-7494SP	Plug Assembly, FP III Non-Reversing (Lower Plug)
3	807-0012	Relay, 18 Amp, 1/3 HP, 24V Coil (4-Pole)
*	807-2434	Relay, 18 Amp, 1/3 HP, 24V Coil (5-Pole)
4	810-1164	Block, 1-Piece Screwless Terminal
5	810-0044	Plug Button
6		Transformer, V & F, Dual Voltage
	807-2176	100V-120V
	807-1999	208V-240V
*	806-9824	Wiring Assembly- Australia Only

* Not Illustrated

**47 SERIES GAS FRYERS
CHAPTER 2: PARTS LIST**

2.18 Flue Assemblies and Related Components



**47 SERIES GAS FRYERS
CHAPTER 2: PARTS LIST**

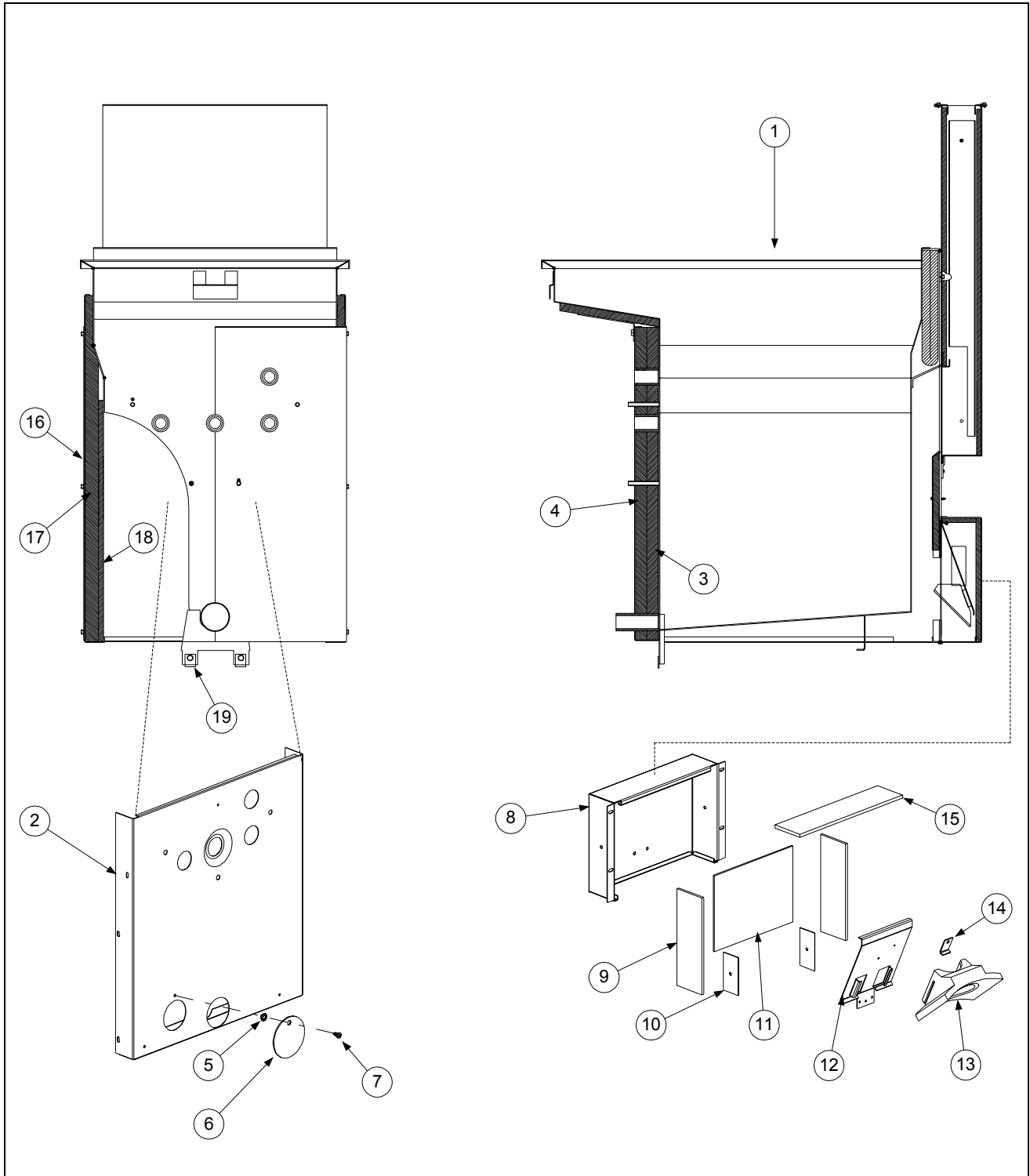
ITEM	PART #	COMPONENT
1	823-2018	Flue Weld Assembly (No Insulation, Retainers, etc.)
*	806-5567SP	Flue Assembly (Includes Insulation, Retainers, etc.)
2	900-4253	Strip, Flue Cap Retainer
3	816-0175	Insulation, Flue- Front
4	816-0174	Insulation, Flue- Rear
5	900-4664	Retainer, Flue- Top Insulation
6	930-0474	Retainer, Flue- Side Insulation
7	812-0256	Insulation, Flue- Side
Rear Combustion Chamber Components		
8	900-7553	Panel, Rear Combustion Chamber
*	806-5566	Panel Assembly, Rear Combustion Chamber
9	900-3420	Support, Flue- Back
10	812-0269	Insulation, Kaowool Blanket- ½ x 14 x 14"
11	816-0178	Insulation, Rear Combustion Chamber
12	900-0412	Retainer, Insulation

* Not Illustrated

47 SERIES GAS FRYERS
CHAPTER 2: PARTS LIST

2.19 Frypot Assemblies and Related Components

2.19.1 Frypot Components — Full-Vat



**47 SERIES GAS FRYERS
CHAPTER 2: PARTS LIST**

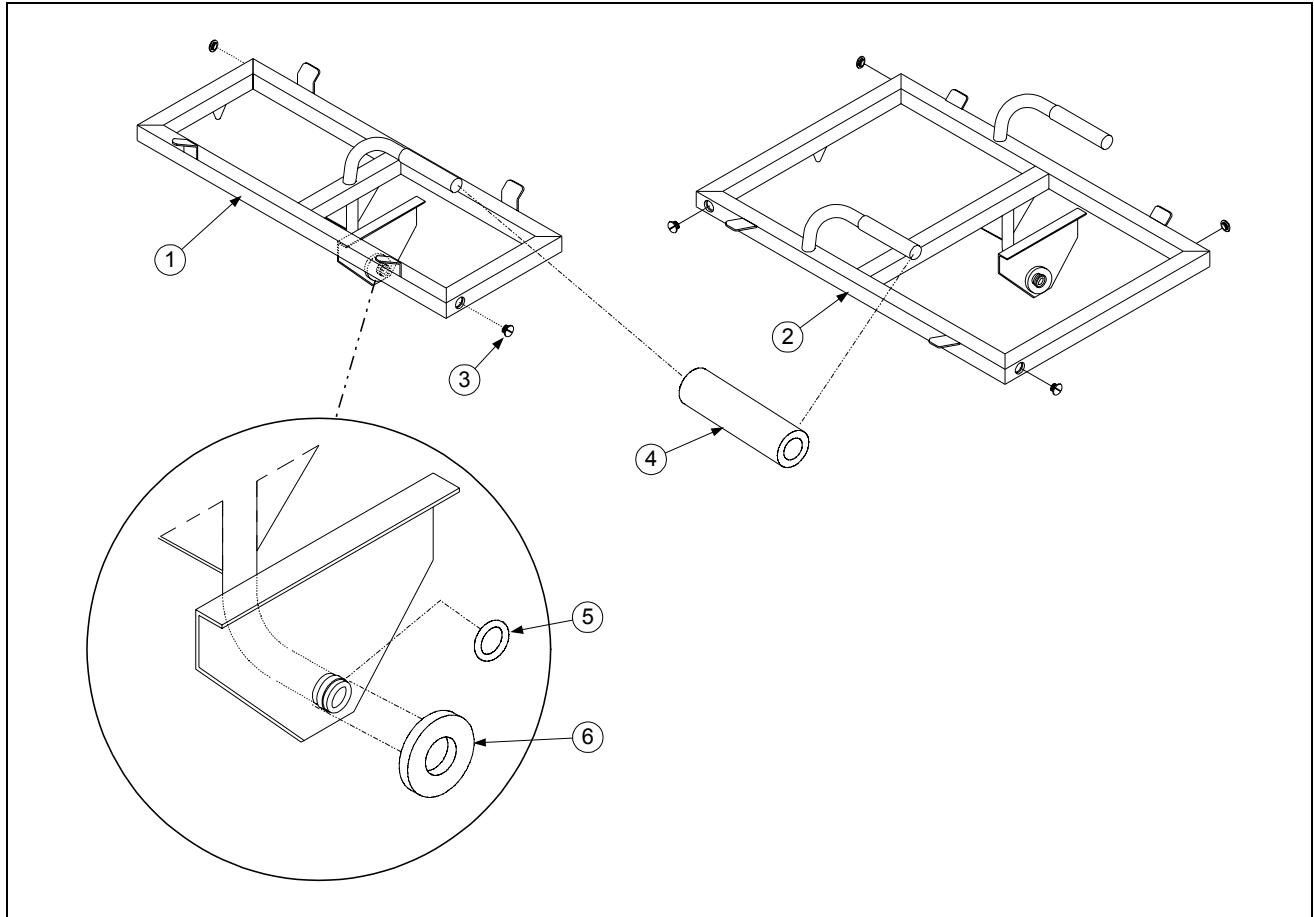
ITEM	PART #	COMPONENT
1	106-1625SP	Frypot Assembly, Full Vat, Power Shower, Complete
*	823-3462SP	Frypot, Full Vat (Insulation and Flue Assembly NOT INCLUDED)
		Front Combustion Chamber Components
2	930-3419	Baffle, Outer Front
3	812-0246	Insulation, Inner Layer
4	812-0245	Insulation, Outer Layer
5	810-0647	Holder, Security Screw
6	900-1090	Cover, Pilot View Port
7	809-0409	Screw, Security
*	806-1095SP	Front Combustion Chamber Assembly (Items 2-7)
		Flue Deflector Box Components
8	900-4685	Box, Flue Deflector
9	816-0171	Insulation, Side
10	900-0169	Retainer, Insulation
11	816-0173	Insulation, Rear
12	910-2030	Holder, Target
13	810-0424	Deflector, Rear Burner
14	910-2068	Clip, Rear Target
15	816-0172	Insulation, Top
*	806-5778SP	Box Assembly, Flue Deflector (Items 8-15)
		Other Components
16	900-6441	Panel, Combustion Chamber Side
17	812-0249	Insulation, Side, Outer Layer, 1 x 16- ³ / ₄ x 19.38"
18	812-0248	Insulation, Side, Inner Layer, ¹ / ₄ x 14- ¹ / ₂ x 15.93", Kaowool
19	809-0173	Clip, Tinnerman
* Not Illustrated		

**47 SERIES GAS FRYERS
CHAPTER 2: PARTS LIST**

ITEM	PART #	COMPONENT
1	106-1624SP	Frypot Assembly, Dual Vat, Power Shower, Complete
*	823-3460SP	Frypot, Dual Vat, (Insulation and Flue Assembly NOT INCLUDED)
2	823-2016	Divider, Upper Combustion Chamber
3	900-4675	Panel, Front Combustion Chamber
4	810-0647	Holder, Security Screw
5	900-1090	Cover, Pilot View Port
6	809-0409	Screw, Security
Flue Deflector Box Components		
7	900-4685	Box, Flue Deflector
8	816-0171	Insulation, Side
9	816-0172	Insulation, Top Edge
10	816-0173	Insulation, Back
11	910-2068	Clip, Rear Target
12	911-2059	Holder, Target, Left
13	912-2059	Holder, Target, Right
14	814-0034	Target, Ceramic
15	823-2015	Divider, Lower
*	806-5779SP	Box Assembly, Flue Deflector (Items 7-15)
Other Components		
16	816-0176	Insulation, Front, Outer Layer, Spinal Glass
17	816-0177	Insulation, Front, Inner Layer, Kaowool
18	900-6441	Panel, Combustion Chamber Side
19	812-0249	Insulation, Side, Outer Layer, 1 x 16- ³ / ₄ x 19.38"
20	812-0248	Insulation, Side, Inner Layer, 1/4 x 14-1/2 x 15.93", Kaowool
21	809-0173	Clip, Tinnerman
* Not Illustrated		

**47 SERIES GAS FRYERS
CHAPTER 2: PARTS LIST**

2.20 Power Shower Components

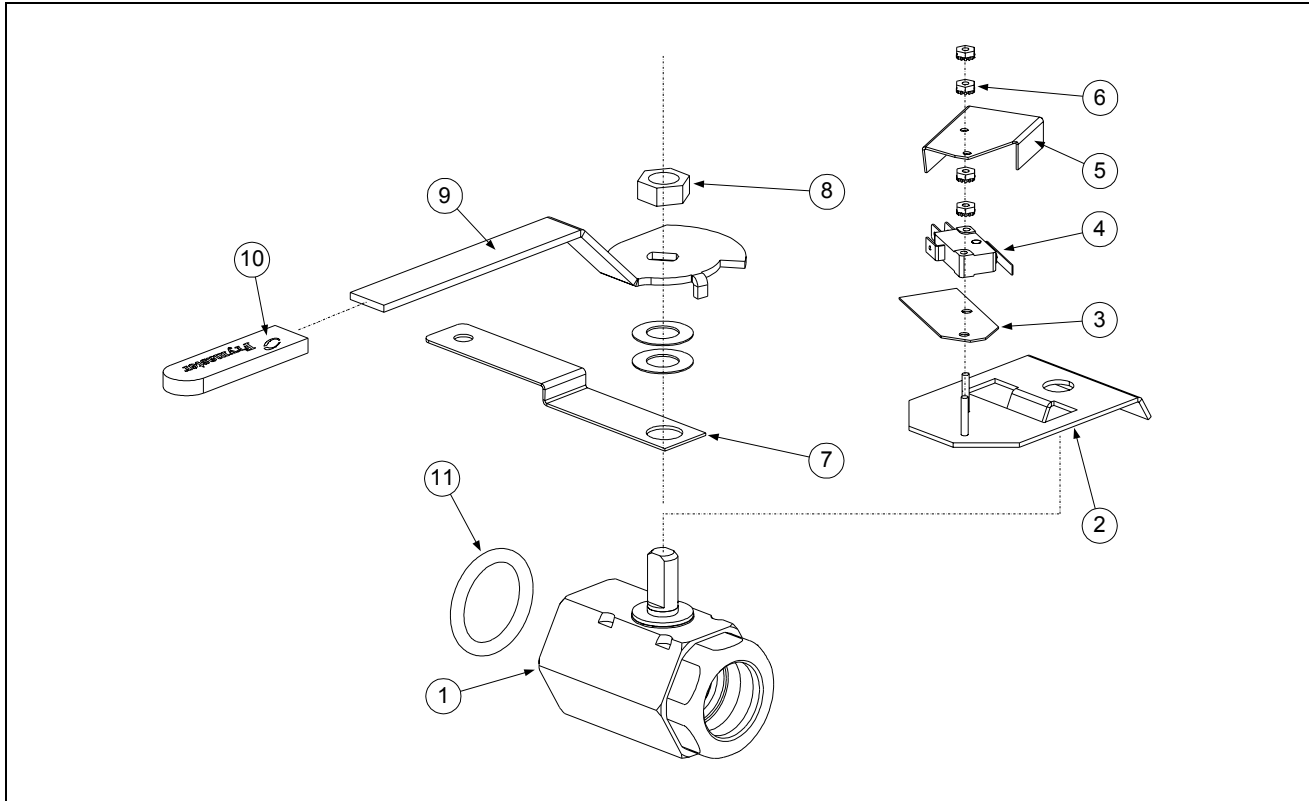


ITEM	PART #	COMPONENT
1	806-6302SP	Power Shower Assembly, Dual Vat, Complete
2	806-4503SP	Power Shower Assembly, Full Vat, Complete
3	809-0415	Screw, Cleanout
4	814-0001	Grip, Handle
5	826-1344	O-Ring (Qty: 5)
6	826-1390	Seal (Gasket— Qty: 5))

**47 SERIES GAS FRYERS
CHAPTER 2: PARTS LIST**

2.21 Drain Valve Components

2.21.1 Full-Vat Drain Valve Components

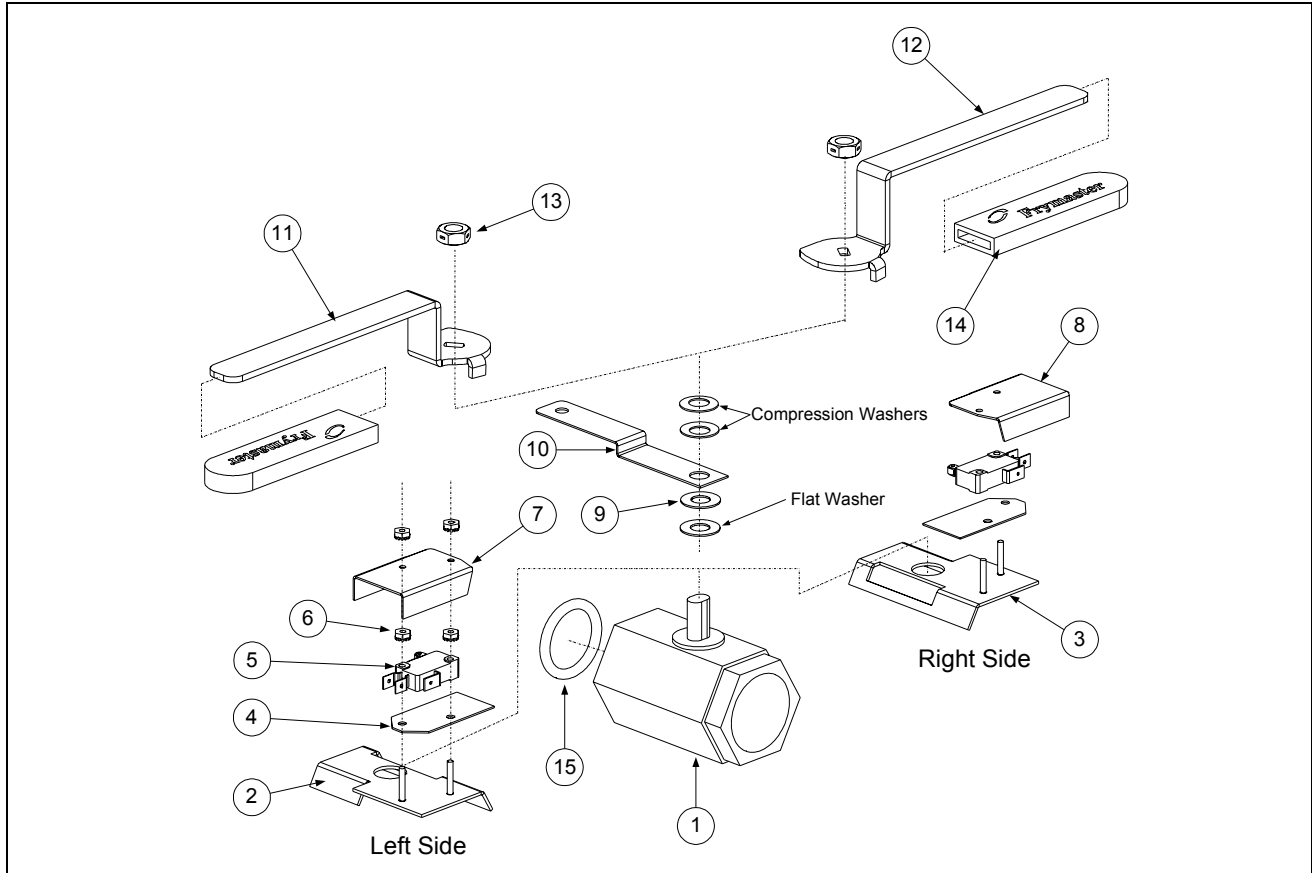


ITEM	PART #	COMPONENT
	806-7508SP	Drain Valve Assembly, Full Vat, 1 ¼", Complete, Filter Units
1	810-1018	Valve, w/o Handle
2	806-8137	Bracket, Drain Safety Microswitch
3	816-0220	Insulation, RF Switch
4	807-2103	Microswitch, Drain Safety
5	900-2841	Cover, Drain Safety Microswitch
6	826-1366	Nut, Hex Keps 4-40 (Qty: 25)
7	900-2354	Bracket, Drain Valve, 1 ¼"
8	809-0540	Nut, 2-Way Lock, ½" – 13
9	900-2521	Handle, Drain Valve
10	814-0047	Sleeve, Valve Handle, Red, w/Logo
11	816-0135	O-Ring
*	810-1569	Drain Valve, Full Vat, 1 ¼", Non-Filter Units (Includes Handle)
*	900-2936	Retainer, Full Vat Drain Valve
*	810-1427	Handle, Drain Valve- Non-Filter Units (One-Hand Locking)

* Not Illustrated

47 SERIES GAS FRYERS
CHAPTER 2: PARTS LIST

2.21.2 Dual-Vat Drain Valve Components



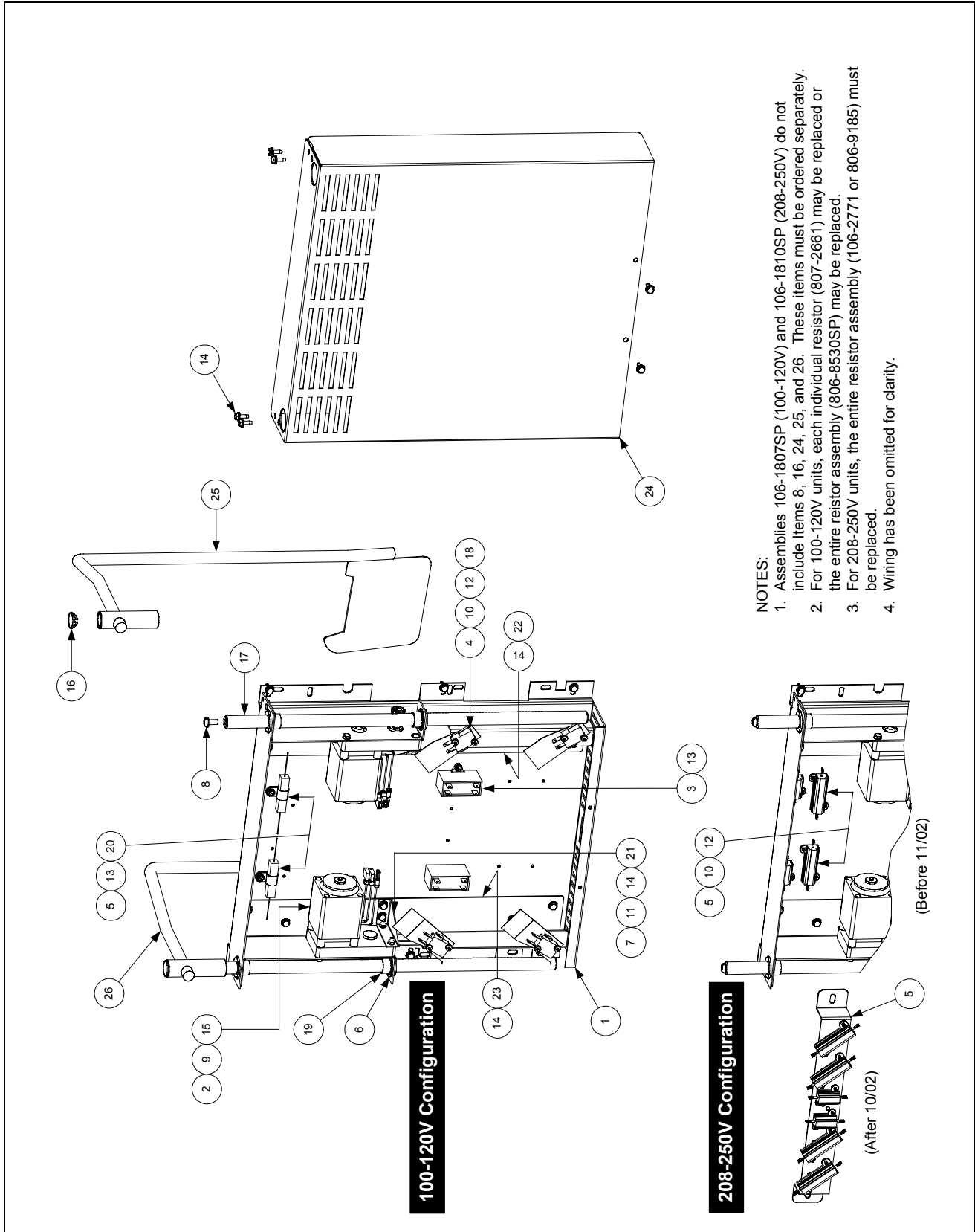
**47 SERIES GAS FRYERS
CHAPTER 2: PARTS LIST**

ITEM	PART #	COMPONENT
	806-7507SP	Drain Valve Assembly, Dual Vat, Left, 1", Complete, Filter Units
	806-7506SP	Drain Valve Assembly, Dual Vat, Right, 1", Complete, Filter Units
1	810-1114	Valve, Without Handle
2	806-8194	Bracket, Drain Safety Microswitch- Left Side
3	806-8195	Bracket, Drain Safety Microswitch- Right Side
4	816-0220	Insulation, RF Switch
5	807-2104	Microswitch, Drain Safety
6	826-1366	Nut, Hex Keps 4-40 (Qty: 25)
7	901-2348	Cover, Drain Safety Microswitch- Left Side
8	902-2348	Cover, Drain Safety Microswitch- Right Side
9	810-1165	Washer, Teflon
10	900-2355	Bracket, Drain Valve, 1"
11	900-2509	Handle- Left Side
12	900-2503	Handle- Right Side
13	809-0539	Nut, 2-Way Lock- 3/8-16
14	814-0047	Sleeve, Valve Handle, Red, w/Logo
15	816-0135	O-Ring
*	810-1338	Drain Valve, Dual Vat, Left or Right, 1", Non-Filter Units
*	900-2934	Retainer, Dual Vat Drain Valve
*	806-9062	Handle, Left Drain Valve
*	806-9064	Handle, Right Drain Valve

* Not Illustrated

47 SERIES GAS FRYERS
CHAPTER 2: PARTS LIST

2.22 Modular Basket Lift Components



**47 SERIES GAS FRYERS
CHAPTER 2: PARTS LIST**

ITEM	PART #	COMPONENT
1		Mount, Modular Basket Lift**
	200-2942	For use on units with 12-pin connectors
	900-7655	For use on units with 6-pin connectors
2	806-5964SP	Motor Assembly, Modular Basket Lift
3	807-2133	Capacitor, 12.5 µFarad, 250VAC Motor Run
4	807-2572	Microswitch
5		Resistor Assembly
	806-8530SP	100-120V Modular Basket Lift (see Note 2 in illustration)
	106-2771	208-250V Modular Basket Lift (before 11/02 use 806-9185; see Note 3)
6	809-0082	Ring, Truarc Retaining
7	826-1361	Screw, 2-32 X 1-inch Slotted Truss Head (Pkg. of 25)
8	809-0127	Screw, ¼-20 X ½-inch Slotted Round Head
9	809-0186	Lock Washer w/External Teeth, #8
10	826-1366	Nut, 4-40 Hex Keps (Pkg. of 25)
11	809-0247	Nut, 2-32 Hex Keps
12	826-1359	Screw, 4-40 X ¾-inch Slotted Round Head (Pkg. of 25)
13	826-1371	Screw, #8 X ½-inch Hex Head Drill Point (Pkg. of 25)
14	826-1374	Screw, #10 X ½-inch Hex Head (Pkg. of 25)
15	809-0503	Screw, 2-32 X ½-inch Hex Head
16	810-0172	Plug, ⅝-inch Stainless Steel Hole
17	810-1012	Rod, Modular Basket Lift
18	812-0442	Insulation, Microswitch
19	813-0035	Bushing, Bronze, .640" ID
20	816-0033	Tie Wrap, Screw Mount
21	900-5529	Gusset, Modular Basket Lift Motor
22	901-8499	Chassis, Modular Basket Lift, Left
23	902-8499	Chassis, Modular Basket Lift, Right
24	910-4776	Cover, Modular Basket Lift
25	823-06931	Rod Assembly, Left Basket Lift
26	823-06932	Rod Assembly, Right Basket Lift
*		Connector, Panel Mount**
	807-0159	12-pin
	807-0158	6-pin
		Wire Assemblies**
*	806-9014SP	For 100-120V Modular Basket Lift w/6-Pin Connector
*	806-8555SP	For 202-250V Modular Basket Lift w/6-Pin Connector
*	106-1822SP	For 100-120V Modular Basket Lift w/12-Pin Connector
*	106-1804SP	For 202-250V Modular Basket Lift w/12-Pin Connector
		Complete Basket Lift Assemblies (see Note 1 in illustration)
*	106-1807SP	100-120V w/o Relay
*	106-1810SP	202-250V w/o Relay

* Not illustrated.

** Basket lift assemblies manufactured prior to February 2002 have 6-pin connectors; those manufactured February 2002 and later have 12-pin connectors. Verify the type of connector in use before ordering wiring assemblies or mounts.

**47 SERIES GAS FRYERS
CHAPTER 2: PARTS LIST**

2.23 Gas Conversion Kits

ITEM	PART #	COMPONENT
	826-1143	Natural Gas to Propane, Honeywell (Non-CE)
	826-1144	Propane to Natural Gas, Honeywell (Non-CE)
	826-0962	Natural Gas to Propane, Robert Shaw (Non-CE)
	826-0963	Propane to Natural Gas, Robert Shaw (Non-CE)
	826-1462	Natural Gas to Propane, Full Vat, Complete (CE Only)
	826-1464	Natural Gas to Propane, Dual Vat, Complete (CE Only)
	826-1463	Propane to Natural Gas, Full Vat, Complete (CE Only)
	826-1465	Propane to Natural Gas, Dual Vat, Complete (CE Only)
		Honeywell- Electronic Ignition – Natural to Propane Components
	807-1848	Spring Kit, Gas Valve
	826-1387	Orifice, Burner (Qty: 10)
	807-1708	Ignitor/Pilot Assembly

NOTE: Each kit contains a pilot with thermopile, the appropriate number and sizes of orifices, and a gas valve regulator.