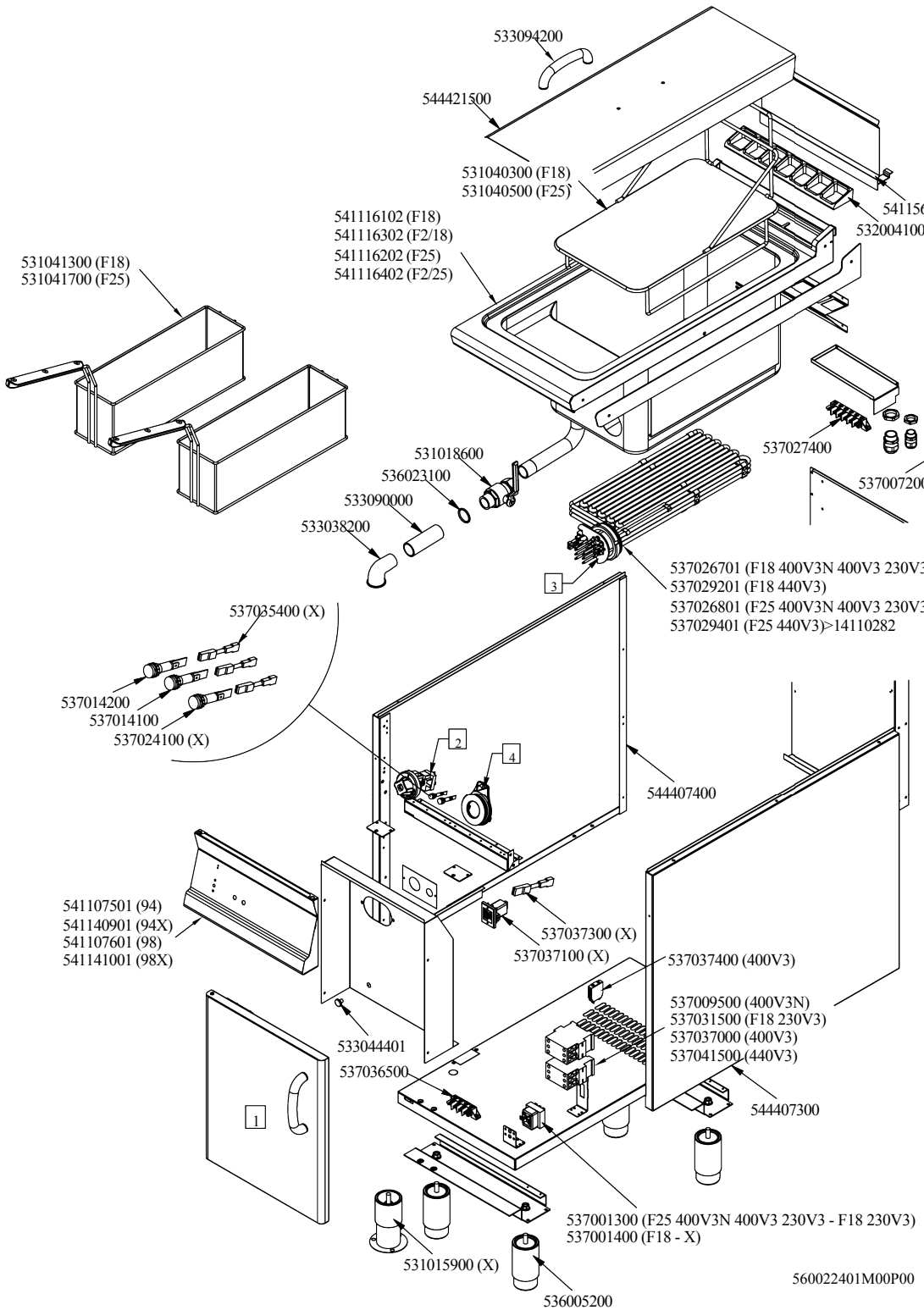




F18-94ETX (SN>=1605)
Tav. 560022401M00P00



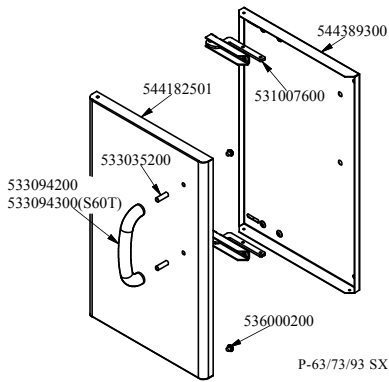


F18-94ETX (SN>=1605) - F18-94ETX(SNMATRDA1605)

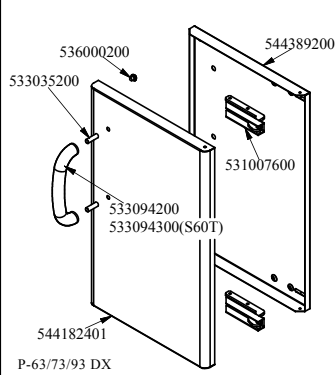
Codice	Descrizione
533094200	MANIGLIA S70/90 INOX
531040300	FILTRO VASCA S.CESTO F18 -E S90
531041300	CESTO F 280X290X150 F18-94E
531018600	VALV.SFERA 1G M/F LEVA
536023100	GUARNIZ.O-RING 31,34X3,53 VITON
533090000	TUBO SC.PROLUNGA RUBINETTO F S90
544407400	FIANCO APP.S90M SX
537027400	MORSETT.6 POLI 40A VITE-VITE
532004100	GRIGLIA SC.FUMI L370 SMALT.RAF
544421500	COP.VASCA F S90
537036500	MORSETT.4 POLI 40A VITE-VITE
533044401	TAPPO FILETTATO M8 INOX TS (S)
536005200	PIEDE Ø2" 120-180 M10 INOX
544407300	FIANCO APP.S90M DX
537037400	CONTATTO NORM.CHIUSO TELER.35A
537037100	SEGNALATORE ACUSTICO 230VAC
537037300	RES.ELETR.3W 056KOHM C/F
537007200	MORSETT. 5 POLI PA 27WP NY (T)
541140901	CODICE IN ELABORAZIONE
537001400	TERMOST.SIC.TRIF. 245°C
531015900	PIEDE Ø2" 120-180 M10 INOX FL
537037000	TELER.35A 690V B.380V 50-60HZ --
537014200	SPIA G.B.VERDE 250VAC F.M.
537014100	SPIA G.B.BIANC.250VAC F.M.
537024100	SPIA G.B.ROSSO 110VAC F.M. (T)
537035400	RES.ELETR.3W 330KOHM C/F
533038200	RACC.A GOM.90° 1 G M.F.
541116102	CODICE IN ELABORAZIONE
537041500	TELER.32A 690V B.460V 60HZ NC
541156900	ASS.PROTEZ.SC.FUMI S70
537029201	RES.COR.ROT.F18 15900W 3-440V
-	-
-	-
-	-
-	-



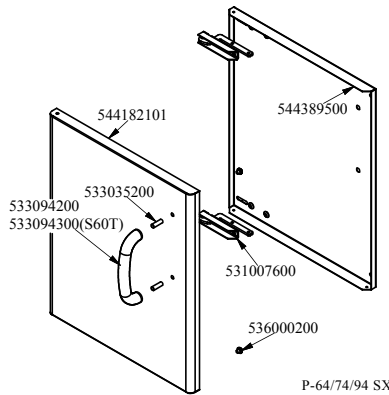
COMPONENTI COMUNI PORTE APPARECCHI
Tav. 560012802M00P00



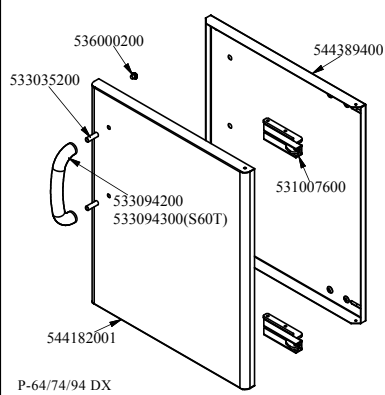
P-63/73/93 SX



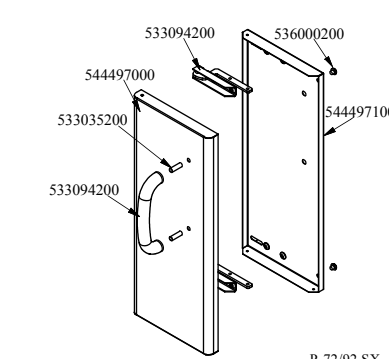
P-63/73/93 DX



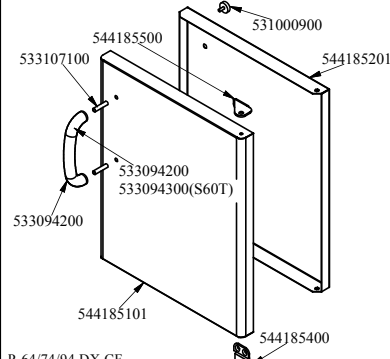
P-64/74/94 SX



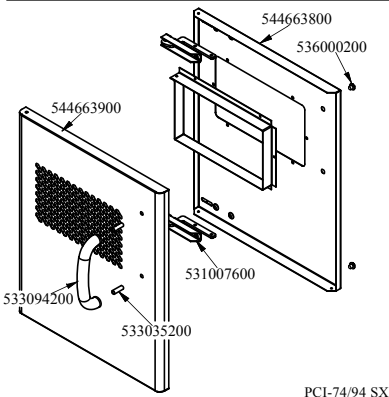
P-64/74/94 DX



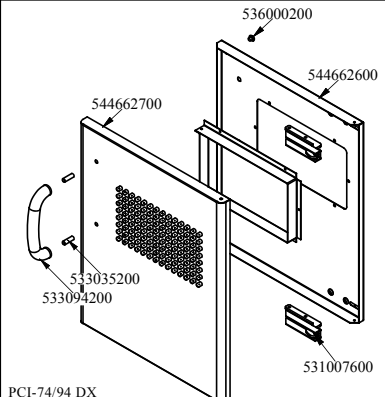
P-72/92 SX



P-64/74/94 DX CF



PCI-74/94 SX



PCI-74/94 DX

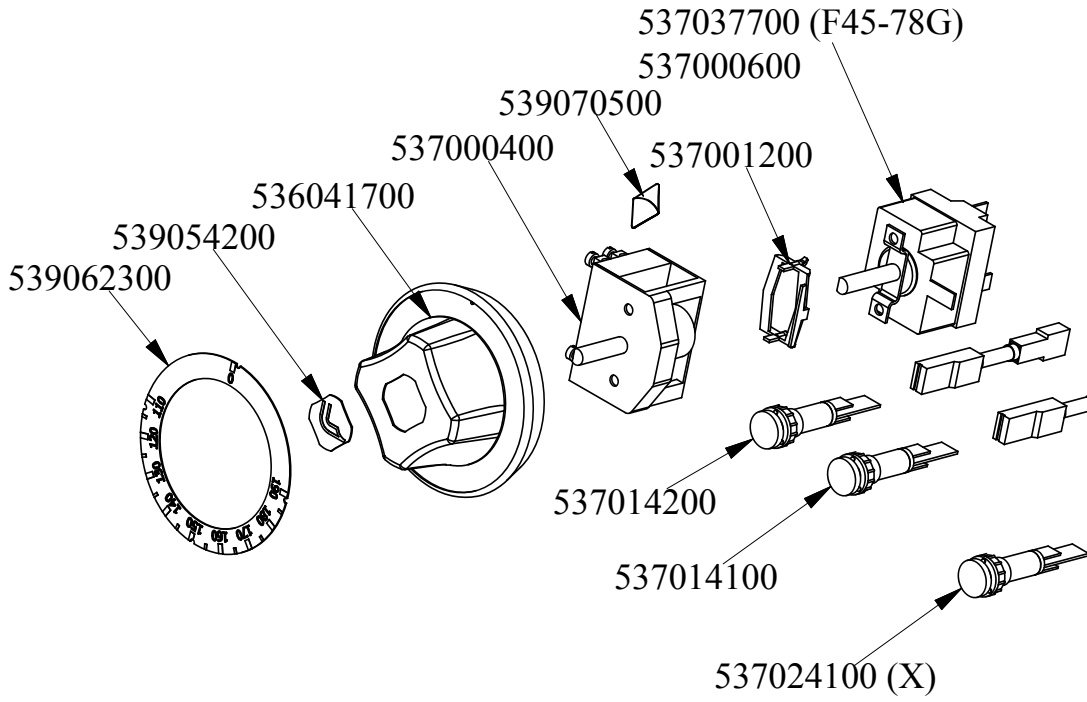


COMPONENTI COMUNI PORTE APPARECCHI - COMPONENTI COMUNI PORTE

Codice	Descrizione
544185101	PORTA 74 CF DX
533107100	DIST.MANIGLIA S70 CF
533094200	MANIGLIA S70/90 INOX
544185400	CERNIERA PORTA MOB.CF S70 INF.
544185500	CERNIERA PORTA MOB.CF S70 SUP.
544185201	CONTROP.74 DX APP. LT CF
531000900	MAGNETE Ø22 KG.3 C/DISCH.
536000200	PARACOLPI Ø12 H.4
544182001	PORTA 74 DX
531007600	CERNIERA PORTA MOBILI
544389400	CONTROP.74 DX APP. LT
533035200	DIST.MANIGLIA S65 S70
544182101	PORTA 74 SX
544389500	CONTROP.74 SX APP. LT
544182401	PORTA 73 DX
544389200	CONTROP.73 DX APP. LT
544389300	CONTROP.73 SX APP. LT
544182501	PORTA 73 SX
544497000	PORTA 72 SX
544497100	CONTROP.72 SX APP. LT
544663900	PORTA 74 SX PCI
544663800	CONTROP.74 SX APP. LT PCI
544662700	PORTA 74 DX PCI
544662600	CONTROP.74 DX APP. LT PCI
533094300	MANIGLIA S60T INOX



COMPONENTI COMUNI COMANDO F-E S70
Tav. 560100201M00P00



56010020

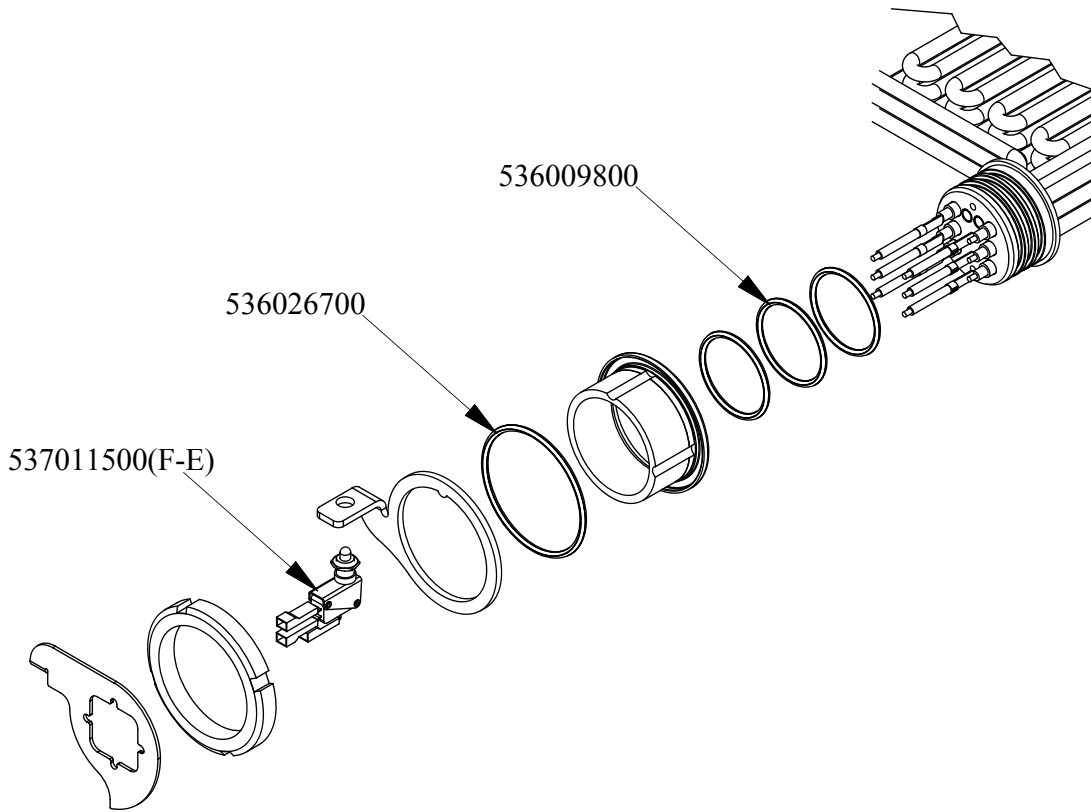


COMPONENTI COMUNI COMANDO F-E S70 - COMP_03_04

Codice	Descrizione
539062300	DISC.72.FQ-E R. (110,190°)
539054200	BOLLINO Ø20,3 CR."L" LOTUS R.
536041700	MANOP.Ø77 4P.G.Ø06 X4,6 CROMO
537000400	COMM.1 POS.1F 16A
539070500	ET.AD.GHIER.INDICE ROSSO
537001200	STAFF.FISS.COMM.S49 TERMOST.3,5
537037700	TERMOST.F.MONOF.104-192°C GAMB.C
537000600	TERMOST.F.MONOF.095-182°C GAMB.C
537014200	SPIA G.B.VERDE 250VAC F.M.
537014100	SPIA G.B.BIANC.250VAC F.M.
537024100	SPIA G.B.ROSSO 110VAC F.M. (T)
537035400	RES.ELETTR.3W 330KOHM C/F



COMPONENTI COMUNI BOCCOLA RESISTENZA ROTATIVA
Tav. 560111000M00P00



560111000M00P00

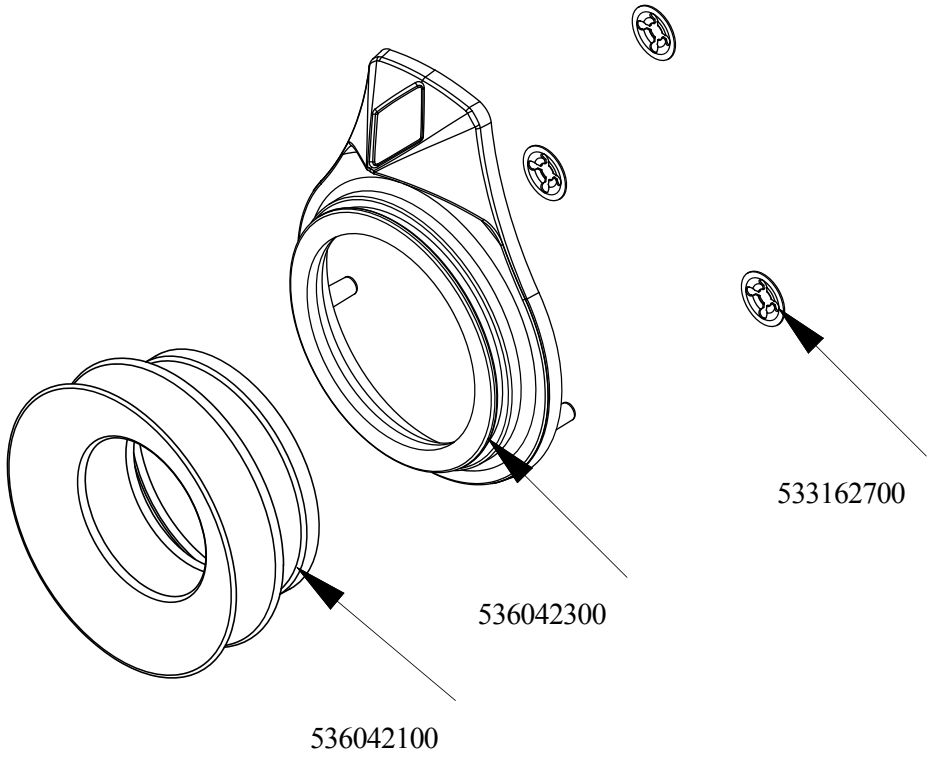


COMPONENTI COMUNI BOCCOLA RESISTENZA ROTATIVA - COMP_03_10

Codice	Descrizione
536009800	GUARNIZ.O-RING 47,22X3,53 VITON
536026700	GUARNIZ.O-RING 74,61X3,53 VITON
537011500	MICROINTERRUTT.PULSANTE 16A 250V



COMPONENTI COMUNI GHIERA CON CUFFIA
Tav. 560125700M00P00



560125700M00P00



COMPONENTI COMUNI GHIERA CON CUFFIA -
COMPONENTI COMUNI GHIERA CON CUFFIA (SNMATRDA1605)

Codice	Descrizione
536042300	GHIERA MAN.Ø77 4 PUNTE CROMO
536042100	CUFFIA X GHIERA X MAN.Ø77 4 PUNT
533162700	CODICE IN ELABORAZIONE