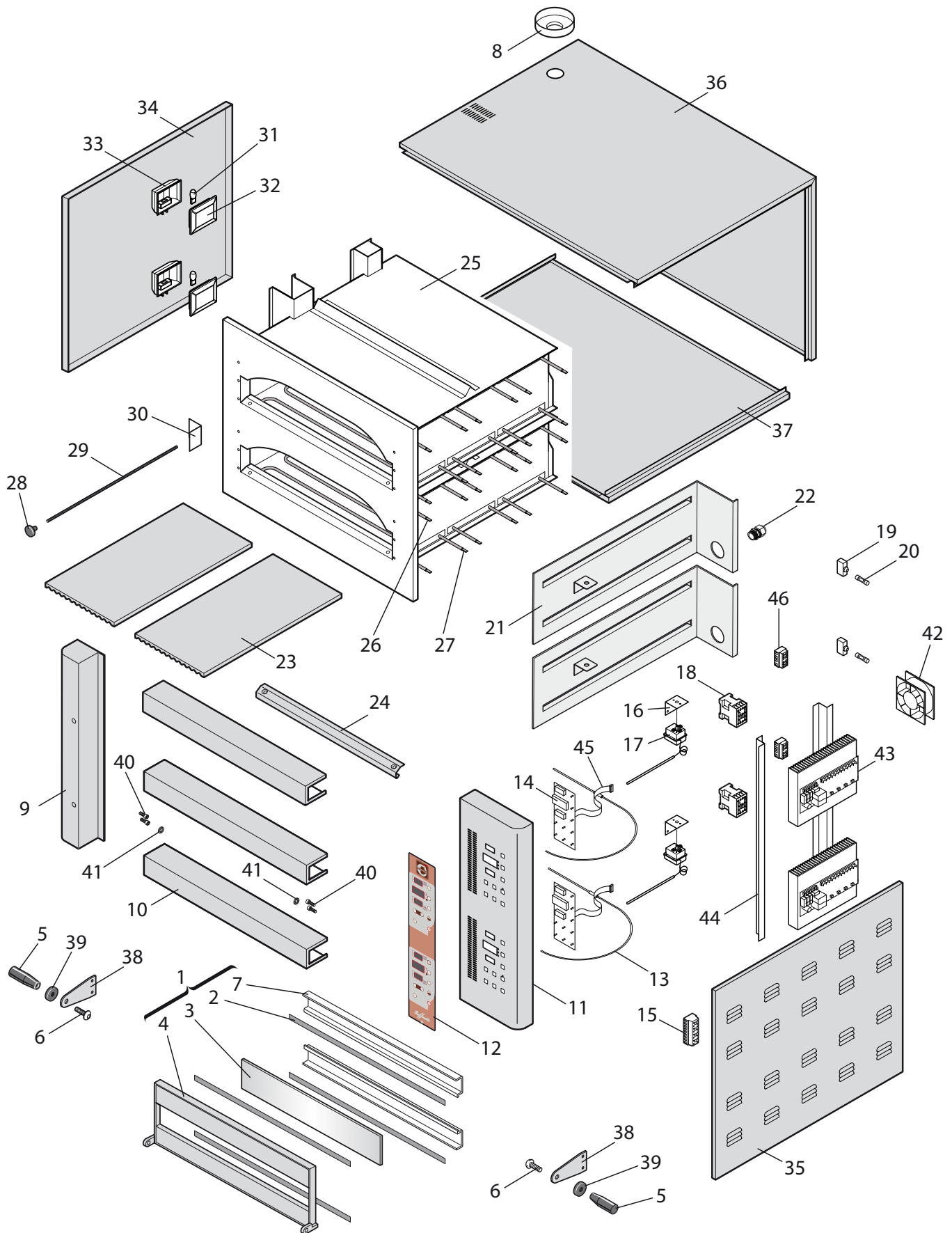


Parti di ricambio
Spare parts
Ersatzteile

RF430/2D - RF630/2D - RF630L/2D - RF930/2D



Parti di ricambio

Spare parts

Ersatzteile

RF430/2D - RF630/2D - RF630L/2D - RF930/2D

| Nr. | Codice Code RF430/2D | Codice Code RF630/2D | Codice Code RF630L/2D | Codice Code RF930/2D | Descrizione | Description | Beschreibung | Q. |
|-----|----------------------|----------------------|-----------------------|-----------------------|-----------------------------|-------------------------------|---------------------------------|----|
| 1 | 92810062 | 92810062 | 92710301 | 92710301 | Assieme porta | Door unit | Türensatz | 1 |
| 2 | 92820162 | 92820162 | 92720261 | 92720261 | Guarnizione vetro | Glass gasket | Scheibendichtung | 4 |
| 3 | 91610001 | 91610001 | 91610004 | 91610004 | Vetro porta | Door glass | Türscheibe | 1 |
| 4 | 92820132 | 92820132 | 92720221 | 92720221 | Struttura porta | Door structure | Türrahmen | 1 |
| 5 | 91510011 | 91510011 | 91510011 | 91510011 | Manopola | Knob | Drehknopf | 2 |
| 6 | 91110007 | 91110007 | 91110007 | 91110007 | Vite inox TBE M12x30 | St. steel TBE M12x30 screws | Schraube Edelstahl TBE M12x30 | 2 |
| 7 | 92820152 | 92820152 | 92720241 | 92720241 | Profilo fermavetro | Glazing bead profile | Glashalteprofil | 2 |
| 8 | 92810150 | 92810150 | 92810150 | 92810150 | Ghiera camino | Flue ring nut | Schraubring Dampfablass | 1 |
| 9 | 92710190 | 92710190 | 92710190 | 92710190 | Colonna sx | Left column | Linke Säule | 1 |
| 10 | 92710220 | 92710220 | 92710230 | 92710230 | Banco | Counter | Bank | 2 |
| 11 | 92710215 | 92710215 | 92710215 | 92710215 | Colonna dx | Right column | Rechte Säule | 1 |
| 12 | 91611650 | 91611650 | 91611650 | 91611650 | Frontale comandi | Control panel front | Frontblende | 1 |
| 13 | 91310211 | 91310211 | 91310211 | 91310211 | Sonda TCJ | TCJ probe | Sonde TCJ | 1 |
| 14 | 91310256 | 91310256 | 91310256 | 91310256 | Scheda di controllo | Control board | Kontrollkarte | 1 |
| 15 | 91310231 | 91310231 | 91310231 | 91310231 | Morsettiera | Terminal board | Klemmenbrett | 1 |
| 16 | 92810085 | 92810085 | 92810085 | 92810085 | Sostegno termostato di sic. | Safety thermostat support | Halterung Sicherheitsthermostat | 1 |
| 17 | 91310051 | 91310051 | 91310051 | 91310051 | Termostato di sicurezza | Safety thermostat | Sicherheitsthermostat | 1 |
| 18 | 91310136 | 91310136 | 91310136 | 91310136** | Contattore | Contactator | Schütz | 2 |
| 19 | 91310511 | 91310511 | 91310511 | 91310511 | Portafusibile | Fuse box | Sicherungshalterung | 1 |
| 20 | 91310502 | 91310502 | 91310502 | 91310502 | Fusibile | Fuse | Sicherung | 1 |
| 21 | 92710120 | 92710121 | 92710120 | 92710121 | Intercapedine | Cavity | Zwischenblech | 1 |
| 22 | 91510223 | 91510223 | 91510223 | 91510223 | Pressacavo | Cable gland | Zugentlastung | 1 |
| 23 | 91610130 | 91610131 | 91610130 | 91610131 | Mattoni refrattario | Firebrick | Schamottestein | 2* |
| 24 | 92710040 | 92710040 | 92710041 | 92710041 | Profilo fermapietre | Glazing bead profile | Steinhalteprofil | 1 |
| 25 | 92710010 | 92710011 | 92710012 | 92710013 | Camera completa | Entire chamber | Komplette Kammer | 1 |
| 26 | 91711220 | 91711221 | 91711222 | 91711223 | Resistenza superiore | Upper heating element | Oberer Heizwiderstand | 1 |
| 27 | 91711200 | 91711201 | 91711202 | 91711203 | Resistenza inferiore | Lower heating element | Unterer Heizwiderstand | 1 |
| 28 | 91510046 | 91510046 | 91510046 | 91510046 | Pomolo camino | Flue knob | Knauf Dampfablass | 1 |
| 29 | 92720190 | 92720191 | 92720190 | 92720191 | Asta camino | Flue pipe | Stange Dampfablass | 1 |
| 30 | 92720210 | 92720210 | 92720210 | 92720210 | Scorrevole camino | Sliding flue | Gleitelement Dampfablass | 1 |
| 31 | 91310206 | 91310206 | 91310206 | 91310206 | Lampada alogena | Halogen lamp | Halogenlampe | 1 |
| 32 | 91610025 | 91610025 | 91610025 | 91610025 | Vetro portalampada | Glass lamp holder | Leuchtenglas | 1 |
| 33 | 91310188 | 91310188 | 91310188 | 91310188 | Portalampada | Light socket | Glühbirnenhalterung | 1 |
| 34 | 92710145 | 92710146 | 92710145 | 92710146 | Pannello sx | Left panel | Paneel links | 1 |
| 35 | 92710165 | 92710166 | 92710165 | 92710166 | Pannello dx | Right panel | Paneel rechts | 1 |
| 36 | 92710090 | 92710091 | 92710082+ 92710094 | 92710083+ 92710094 | Involucro | Enclosure | Hülle | 1 |
| 37 | 92710060 | 92710061 | 92710062 | 92710063 | Base | Base | Basis | 1 |
| 38 | 92810130 | 92810130 | 92810130 | 92810130 | Maniglia inox | Stainless steel handle | Edelstahlgriff | 2 |
| 39 | 91510060 | 91510060 | 91510060 | 91510060 | Rondella salvamani | Flat (hand protection) washer | Handschutzgummi | 2 |
| 40 | 91110011 | 91110011 | 91110011 | 91110011 | Vite zincate TCE M8x16 | Zinc-coated TCE M8x16 screws | Schraube verzinkt TCE M8x16 | 8 |
| 41 | 92810140 | 92810140 | 92810140 | 92810140 | Rondella porta | Door washer | Unterlegscheibe Tür | 4 |
| 42 | 91310320 | 91310320 | 91310320 | 91310320 | Ventola | Fan | Gebälse | 1 |
| 43 | 91310305 | 91310305 | 91310305 | 91310305 | Scheda di potenza | Power board | Leistungsplatine | 2 |
| 44 | 92710261 | 92710261 | 92710261 | 92710261 | Sostegno scheda di potenza | Power board support | Halterung Leistungsplatine | 2 |
| 45 | 91310291 | 91310291 | 91310291 | 91310291 | Cavo di connessione | Connection cable | Anschlusskabel | 2 |
| 46 | 91310236 | 91310236 | 91310236 | 91310236 | Morsettiera G5/4 | Terminal board G5/4 | Klemmenbrett G5/4 | 2 |

* = 1 mattone per il modello RF430/2D - 1 brick for model RF430/2D - 1 Stein beim Modell RF430/2D

** = 91310145 - RF930 / 935 AC 3 230 50/60 Hz